

THIS MAP WAS PREPARED FOR ASSESSMENT PURPOSE ONLY.

Upper Left:
123°17'15"W 43°27'7"N
4176173E 511181N ft

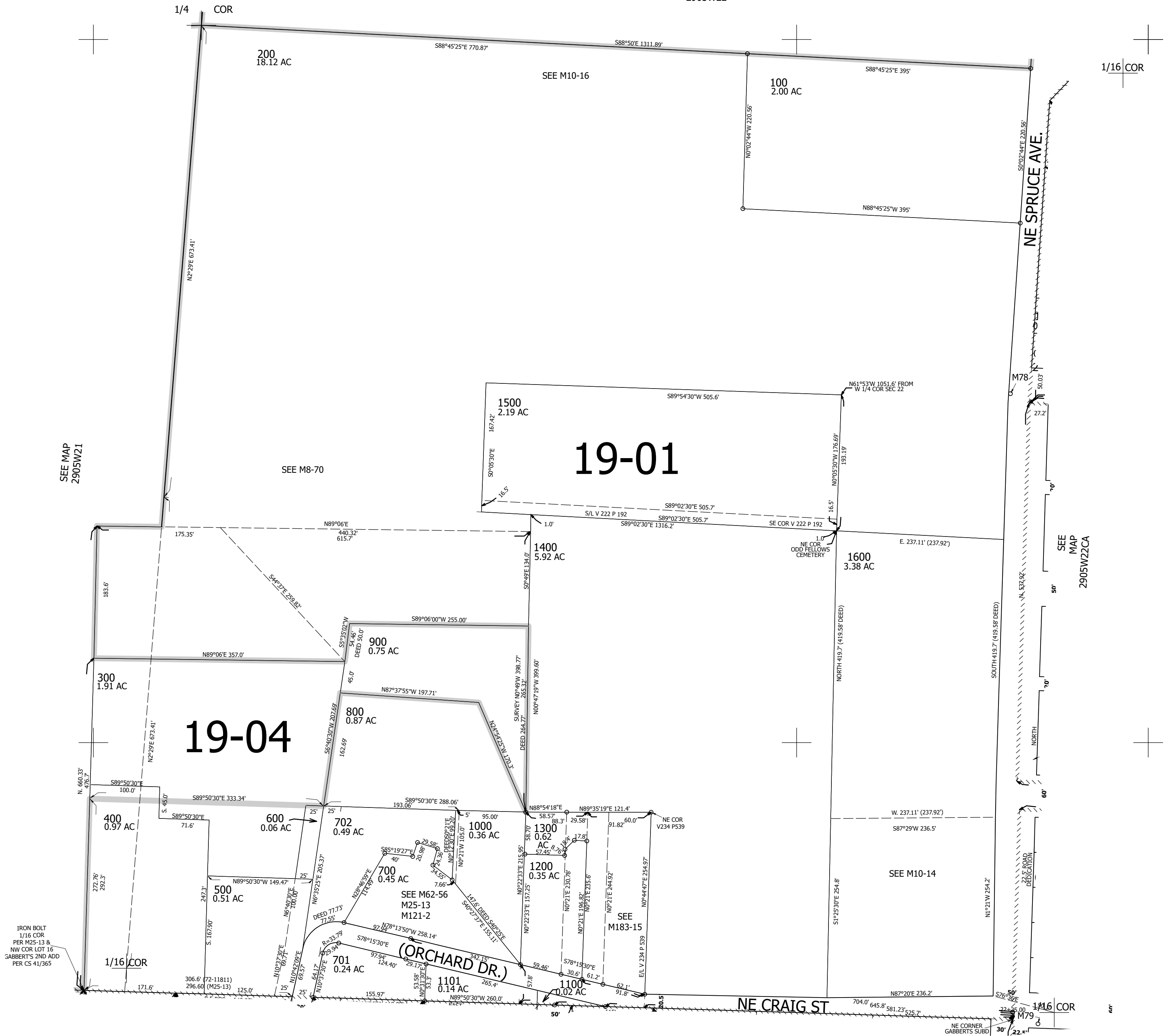
NW1/4 SW1/4 SEC.22 T.29S. R.05W. W.M.
DOUGLAS COUNTY
1" = 100'

Date Exported 2025-07-30

290522CB
Myrtle Creek

CANCELLED NOS:
1201 101

SEE MAP
2905W22



SEE MAP
2905W21

SEE M8-70

1/16 COR

NE SPRUCE AVE.

SEE MAP
2905W22CA

SEE MAP
2905W22CC

IRON BOLT
1/16 COR
PER M25-13 &
NW COR LOT 16
GABBERT'S 2ND ADD
PER CS 41/365

290522CB
Myrtle Creek

Lower Right:
123°16'48"W 43°1'50"N
4178148E 509442N ft