

THIS MAP WAS PREPARED FOR ASSESSMENT PURPOSE ONLY.

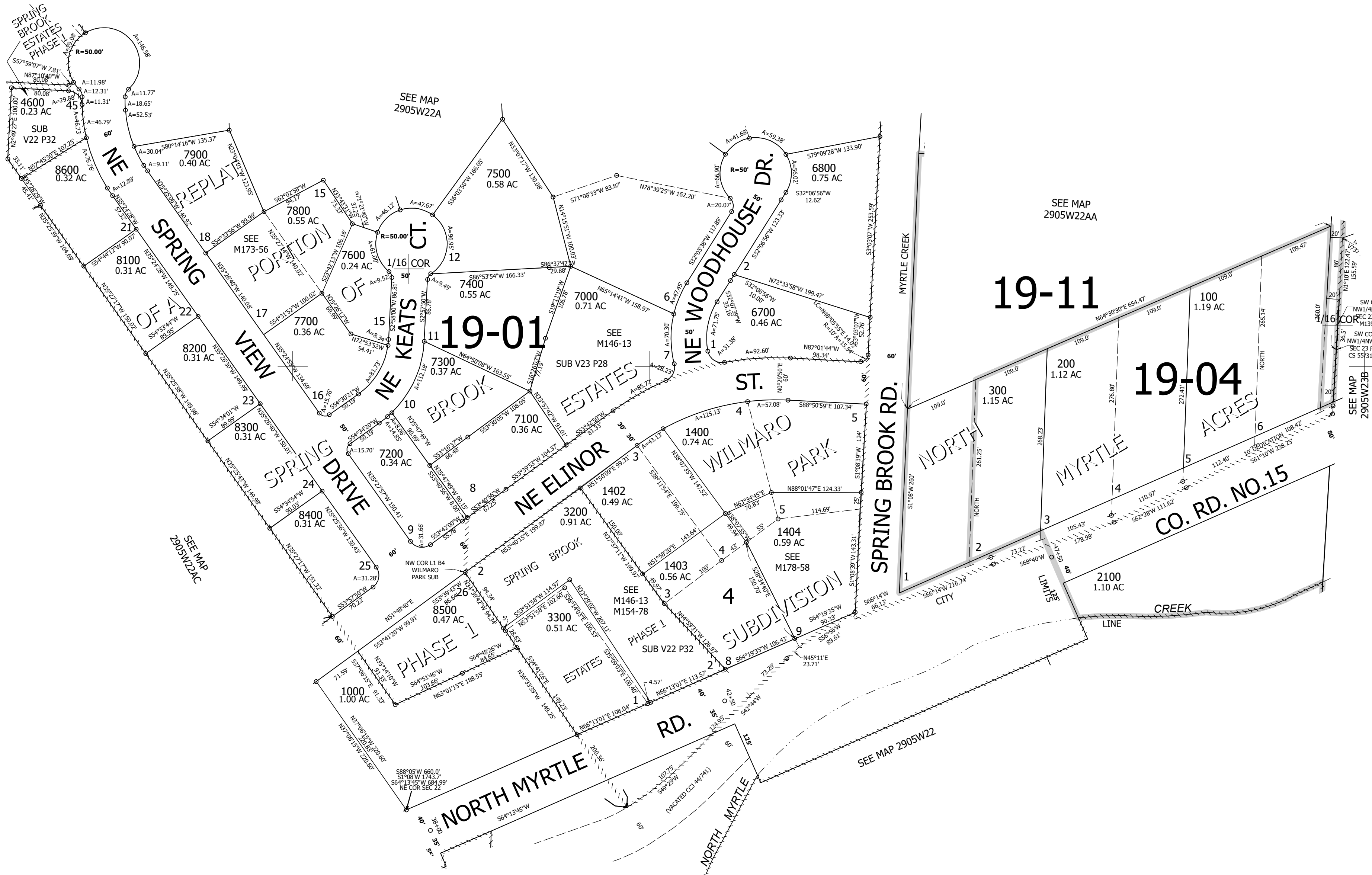
Upper Left:
123°16'23"W 43°2'24"N
4180076E 512769N ft

SE1/4 NE1/4 SEC.22 T.29S. R.05W. W.M.
DOUGLAS COUNTY
1" = 100'

Date Expored 2025-04-08

290522AD
Myrtle Creek

CANCELLED NOS:
1500 1600 1700 1800 400 500
600 700 800 900 1100 1200
1300 1900 2000 3201 2200 2300
2400 2500 2600 2700 2800 2900
3000 3100 3400 3500 3600 3700
3800 3900 4000 4100 4200 4300
4400 4500 4700 4800 4900 5000
5100 5200 5300 5400 5500 5600
5700 5800 5900 6000 6100 6200
6300 6400 6500 6600 8000 6900
7601 1401 1405 1406 1407 1408
1409



19-11

19-04

19-01

SW COR NW1/4NW1/4 SEC 23 PER M139-66
SW COR NW1/4NW1/4 SEC 23 PER CS 551317-7

SEE MAP 2905W23B

290522AD
Myrtle Creek

Lower Right:
123°15'56"W 43°2'7"N
4182051E 511030N ft