

THIS MAP WAS PREPARED FOR ASSESSMENT PURPOSE ONLY.

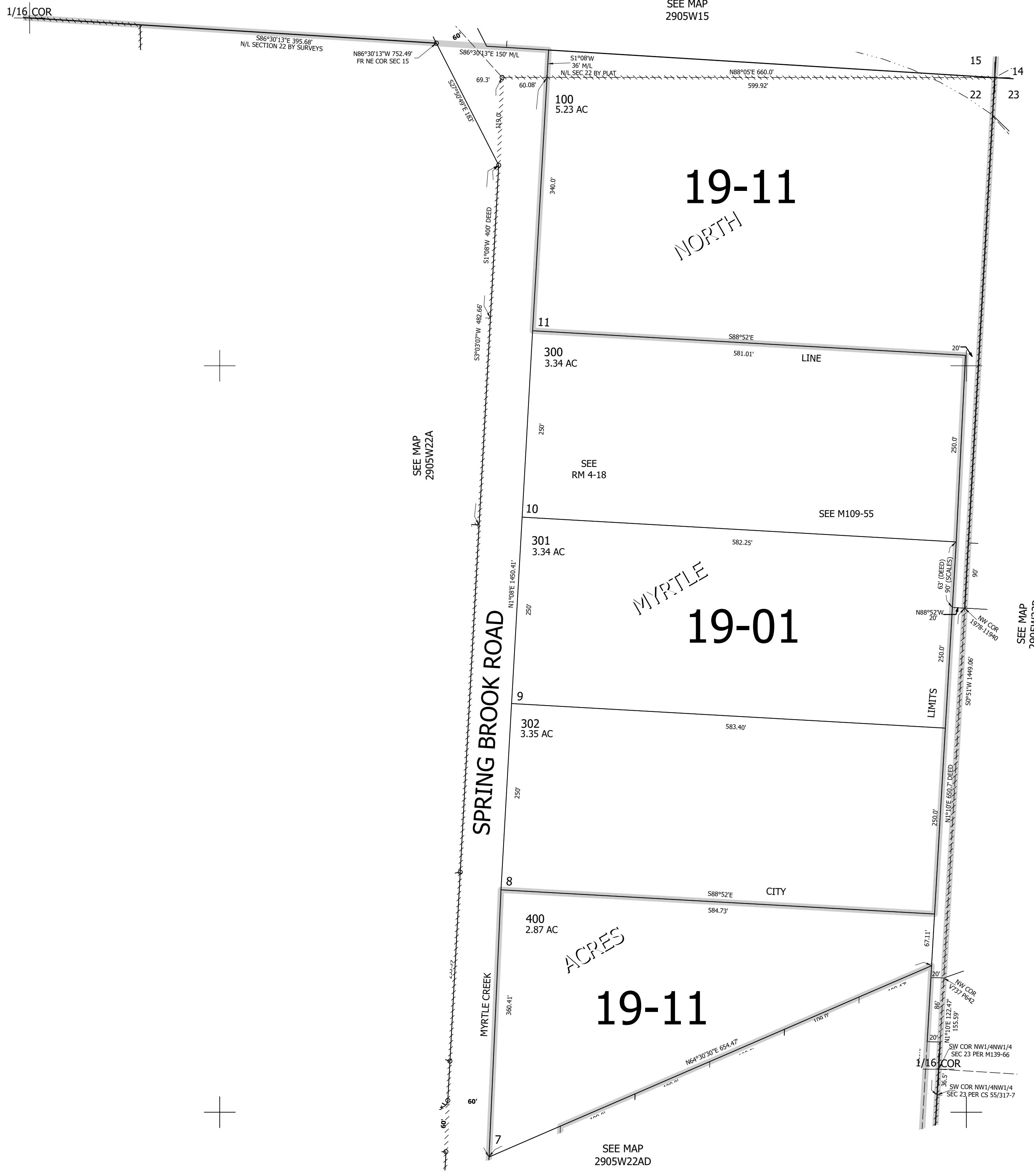
Upper Left:  
123°16'19"W 43°2'32"N  
4180416E 513567N ft

NE1/4 NE1/4 SEC.22 T.29S. R.05W. W.M.  
DOUGLAS COUNTY  
1" = 100'

Date Exported 2024-09-25

290522AA  
Myrtle Creek

CANCELLED NOS:  
201 200



1/16 COR

SEE MAP  
2905W22AD

SEE MAP  
2905W23B

SEE MAP  
2905W15

290522AA  
Myrtle Creek

Lower Right:  
123°15'52"W 43°2'15"N  
4182391E 511828N ft