

THIS MAP WAS PREPARED FOR ASSESSMENT PURPOSE ONLY.

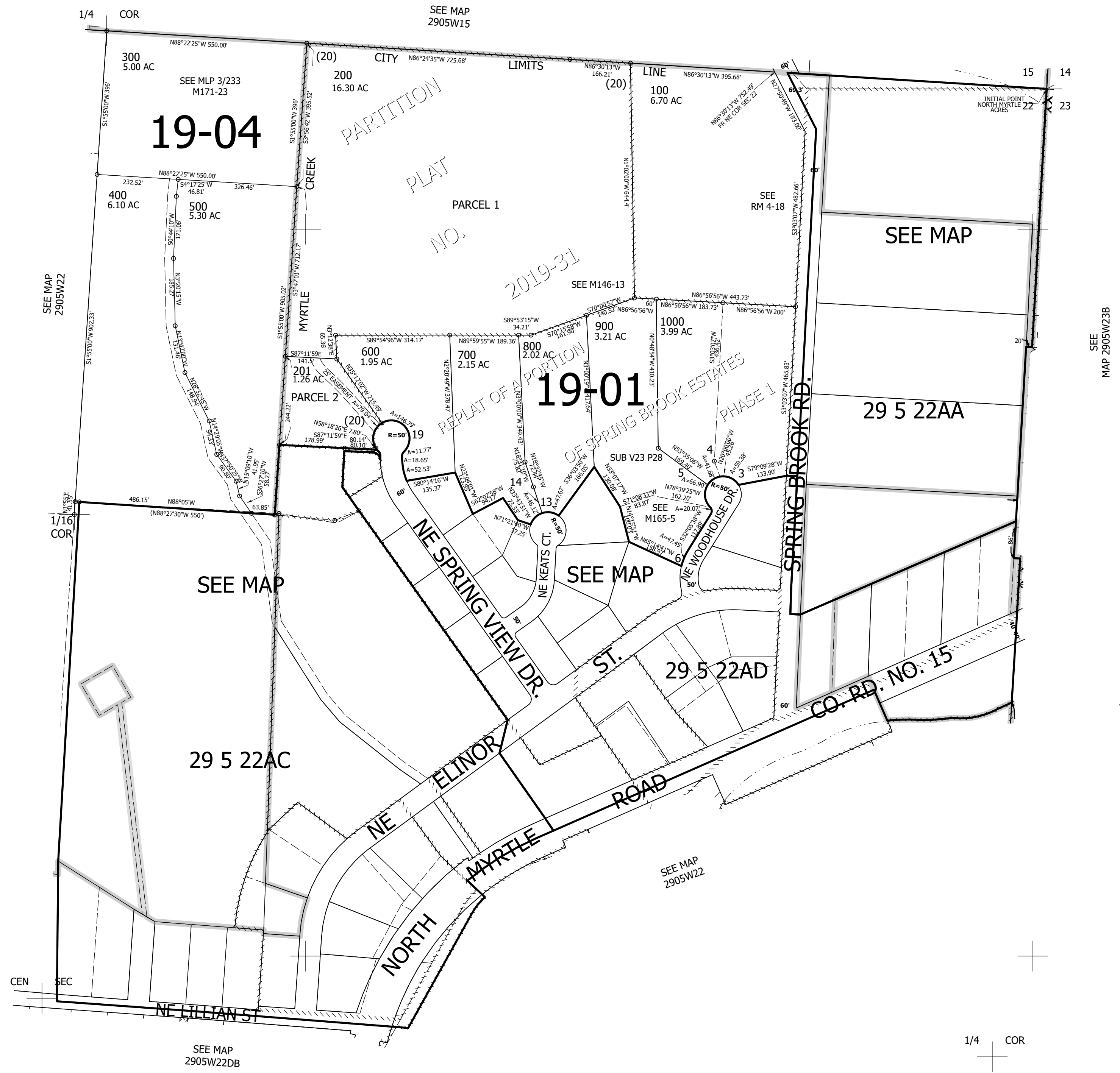
Upper Left:
123°16'43"W 43°2'35"N
4178669E 513953N ft

NE1/4 SEC.22 T.29S. R.05W. W.M.
DOUGLAS COUNTY
1" = 200'

Date Exported 2025-10-29

290522A
& INDEX
Myrtle Creek

CANCELLED NOS:
1100 1200



THIS MAP WAS PREPARED FOR ASSESSMENT PURPOSE ONLY.

Lower Right:
123°15'48"W 43°2'11"N
4182596E 510353N ft
290522A
& INDEX
Myrtle Creek