

THIS MAP WAS PREPARED FOR ASSESSMENT PURPOSE ONLY.

Upper Left:
123°17'30"W 43°2'38"N
4175207E 514380N ft

SEC.22 T.29S. R.05W. W.M.
DOUGLAS COUNTY
1" = 400'

Date Exported 2025-07-30

290522
& INDEX
Myrtle Creek

CANCELLED NOS:
1300 700 800
900 1000 1100
1203A1 1203A2 1203A3
1203A4 1203A5 200
1204 101 100
300 400 500
1206 1501

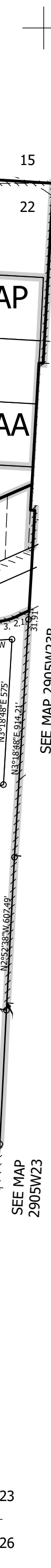
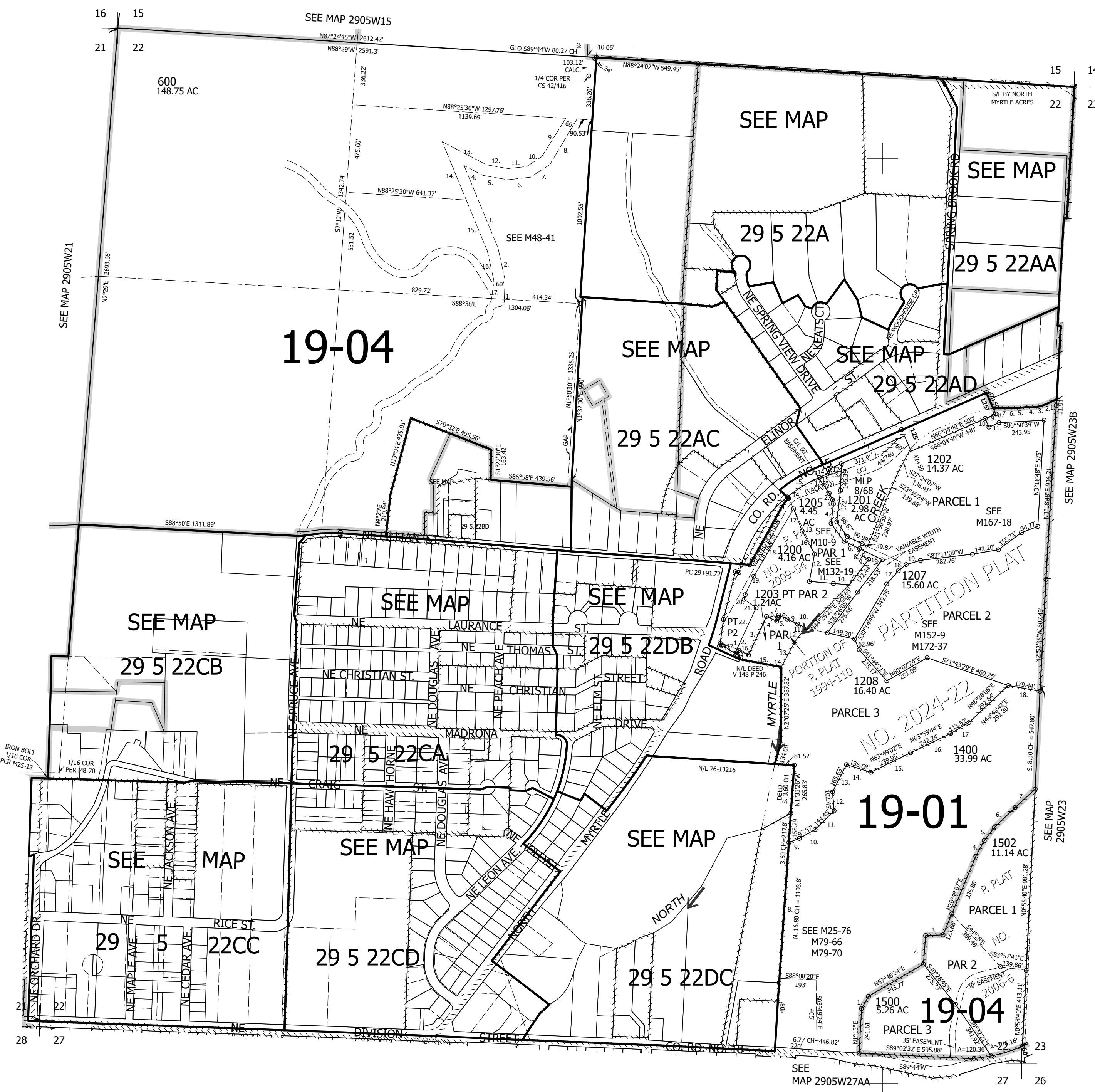
- PARCEL 1203
- N23°15'E 25.23'
 - S66°56'43"E 57.5'
 - N23°03'17"E 229.64'
 - S67°00'06"E 60.98'
 - N23°03'17"E 21.2'
 - N66°35'08"W 5.05'
 - N23°24'55"W 13.35'
 - S66°45'32"E 50.98'
 - S66°45'32"E 63'
 - S66°45'32"E 54.29'
 - S44°25'23"W 66.71'
 - S32°32'58"W 34.32'
 - S28°48'59"W 138.57'
 - S26°00'28"W 10.88'
 - S81°23'30"E 228.26'
 - N23°15'E 12.4'
 - N58°59'05"W 25.23'

- PARCEL 1400
- N28°06'29"E 76.43'
 - N2°36'50"E 154.87'
 - N86°00'20"E 93.79'
 - N26°24'13"E 95.6'
 - N35°34'51"E 88.41'
 - N44°11'23"E 157.58'
 - N45°36'20"E 147.28'
 - N2°04'11"E 860.72'
 - N68°02'11"E 59.19'
 - N58°42'53"E 97.64'
 - N43°29'54"E 144.65'
 - N6°43'04"W 102.14'
 - N25°15'27"E 165.63'
 - S74°17'44"E 136.68'
 - N62°09'23"E 239.95'
 - N62°20'05"E 242.24'
 - N57°06'52"E 113.52'
 - S81°31'19"E 176.21'

- PARCEL 600
- N0°22'W 111.01'
 - N14°38'30"W 174.99'
 - N24°38'30"W 481.55'
 - S64°44'45"E 116.29'
 - S82°29'30"E 136.05'
 - N81°28'E 122.52'
 - N54°50'30"E 124.9'
 - N28°36'E 288.91'
 - S28°36'W 243.97'
 - S54°50'30"W 96.71'
 - S81°29'W 99.87'
 - N82°29'30"W 118.24'
 - N64°44'45"W 271.31'
 - S24°38'30"E 337.8'
 - S24°38'30"E 302.91'
 - S14°38'30"E 162.24'
 - S0°22'E 101.65'

- PARCEL 1205
- S34°44'47"E 102.05'
 - S27°43'14"E 39.94'
 - S11°31'43"E 22.65'
 - S6°44'16"W 106.49'
 - S36°03'51"E 117.75'
 - S64°07'07"E 88.9'
 - S64°04'21"E 37.18'
 - S31°04'22"W 29.87'
 - S64°14'22"E 40.38'
 - N85°17'12"W 86.46'
 - N85°17'12"W 130.58'
 - N10°39'41"E 151.13'
 - N24°54'44"W 332.43'
 - N46°08'08"W 10.56'
 - A=198.04' R=763.51'
LC= N58°29'16"E 197.49'
 - N28°34'08"W 141.38'
 - N20°53'28"W 128.59'
 - S30°35'12"W 422.45'
 - S25°01'03"W 110.62'
 - S13°23'53"W 25.88'

- P.P. 2024-22
- S80°08'05"W 14.37'
 - S76°32'16"W 49.49'
 - S85°34'41"W 56.86'
 - S89°24'27"W 53.44'
 - N84°11'48"W 50.93'
 - S88°47'24"W 51.92'
 - S84°14'18"W 68.33'
 - S23°55'20"E 24.68'
 - N66°04'40"E 60.00'
 - N23°55'20"W 60.00'
 - S66°04'40"W 60.00'
 - N66°10'14"E 78.44'
 - N23°55'20"W 20.01'
 - N66°04'40"E 63.08'
 - LC = S66°04'08"W 4.01'
A=4.01' R=763.51'
 - S64°08'06"E 104.83'
 - S41°03'15"W 94.93'
 - S51°38'04"W 54.42'
 - S73°31'26"W 80.90'



28 27

27 26

290522
& INDEX
Lower Right:
123°15'41"W 43°1'32"N
4183056E 507425N ft
Myrtle Creek