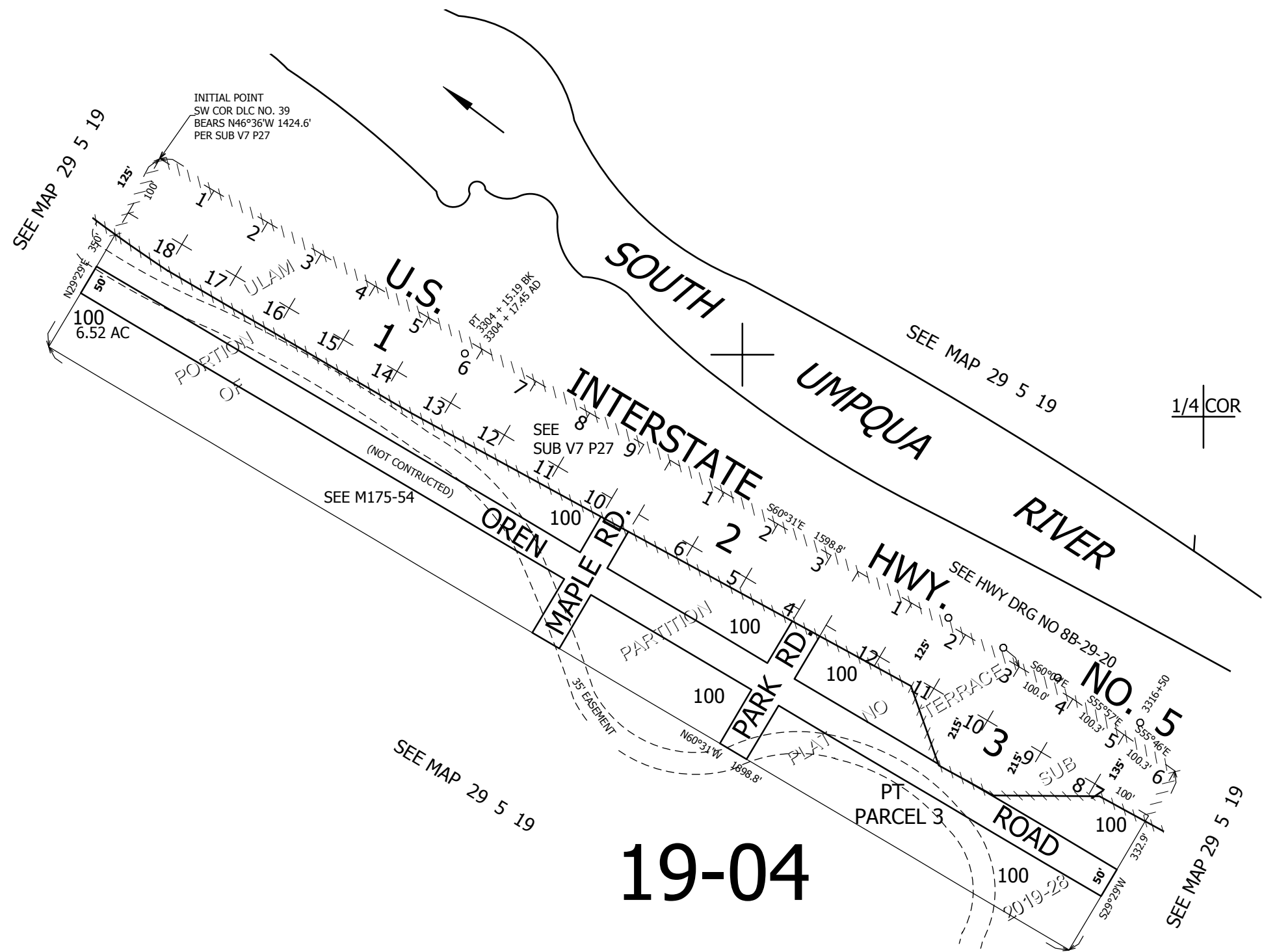
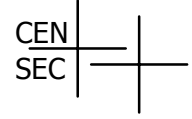


THIS MAP WAS PREPARED FOR ASSESSMENT PURPOSE ONLY.

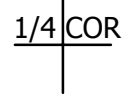
SE1/4 SEC.19 T29S. R.5W. W.M.
DOUGLAS COUNTY
1" = 200'

REVISED ON
10-16-19

29 5 19D



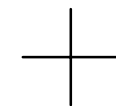
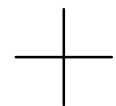
CANCELLED NO'S



SEE MAP 29 5 19

19-04

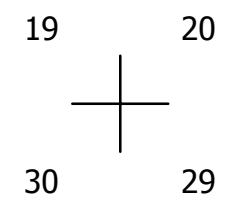
SEE MAP 29 5 19



509,000



4,166,000



29 5 19D