

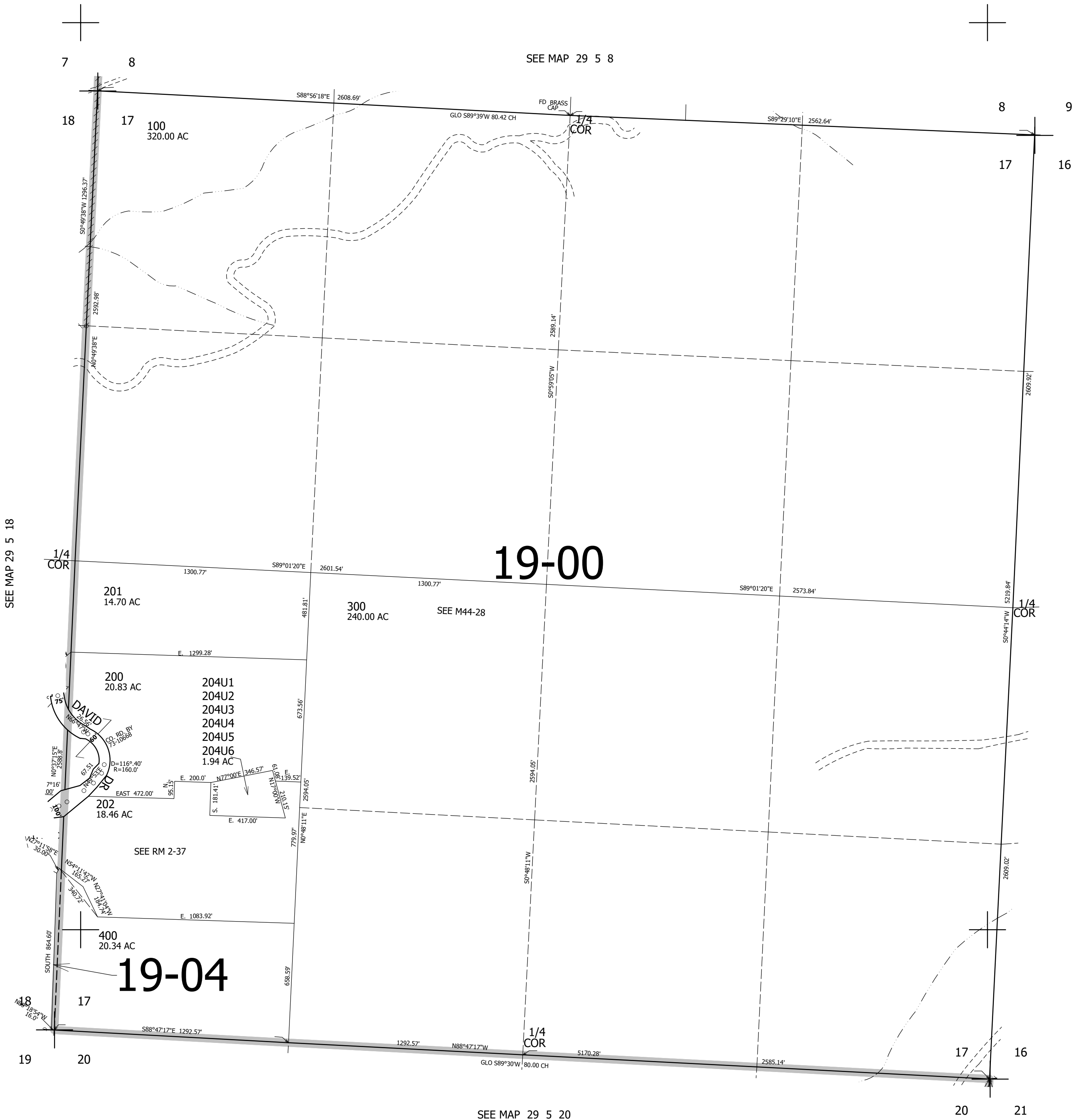
THIS MAP WAS PREPARED FOR ASSESSMENT PURPOSE ONLY.

SEC.17 T29S. R.5W. W.M.
DOUGLAS COUNTY

REVISED ON
6-22-21

29 5 17

1" = 400'



CANCELLED NO'S
203

SEE MAP 29 5 18

SEE MAP 29 5 16

514,000

SEE MAP 29 5 20

4,172,000

29 5 17