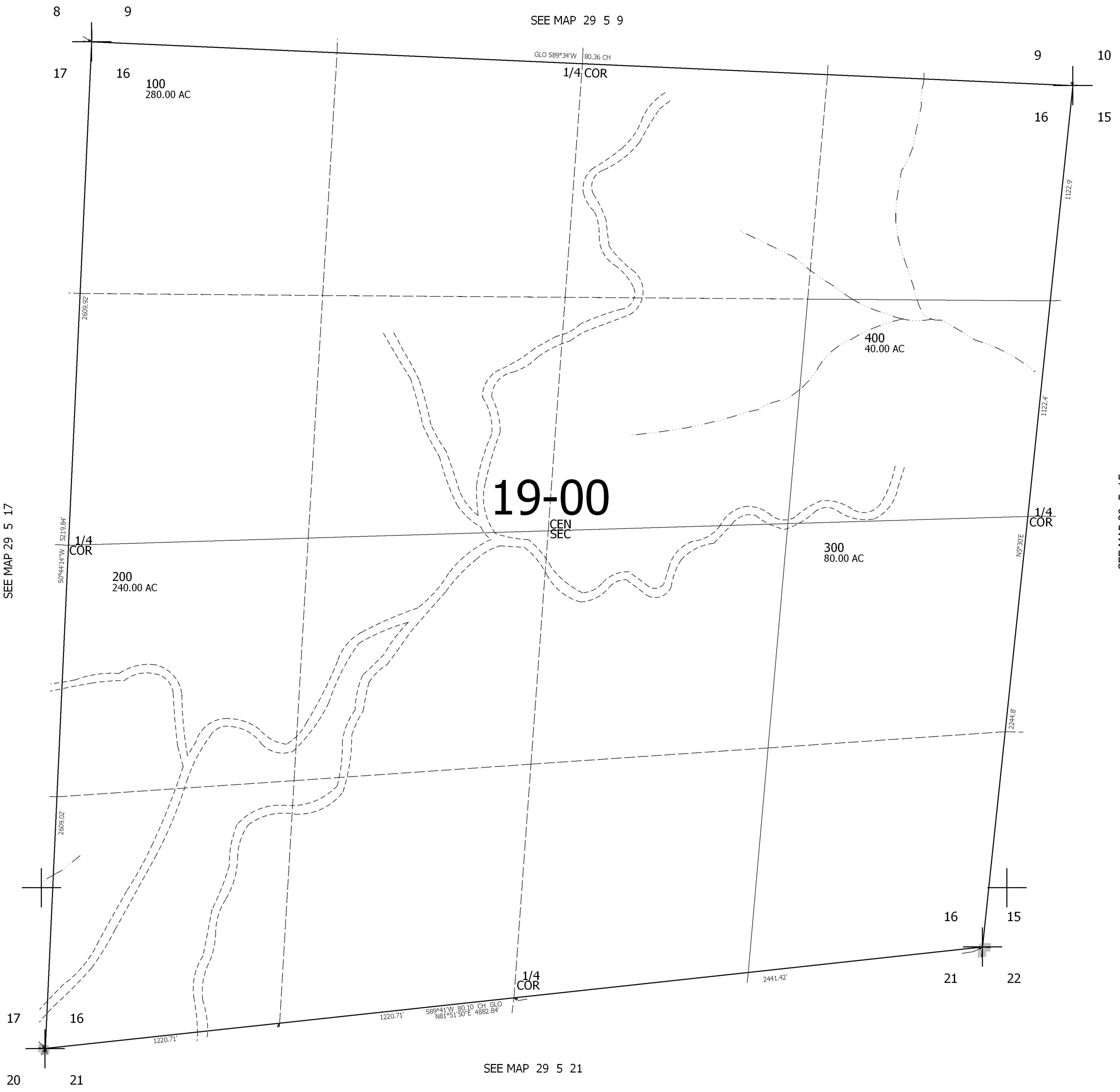


THIS MAP WAS PREPARED FOR ASSESSMENT PURPOSE ONLY.

SEC.16 T29S. R.5W. W.M.
DOUGLAS COUNTY
1" = 400'

REVISED ON

29 5 16



CANCELLED NO'S

SEE MAP 29 5 15

514,000

4,177,000

29 5 16