

THIS MAP WAS PREPARED FOR ASSESSMENT PURPOSE ONLY.

SE1/4 SEC.14 T29S. R.5W. W.M. DOUGLAS COUNTY
1" = 200'

REVISED ON 12-3-19

29 5 14D

CEN | SEC

1/4 | COR

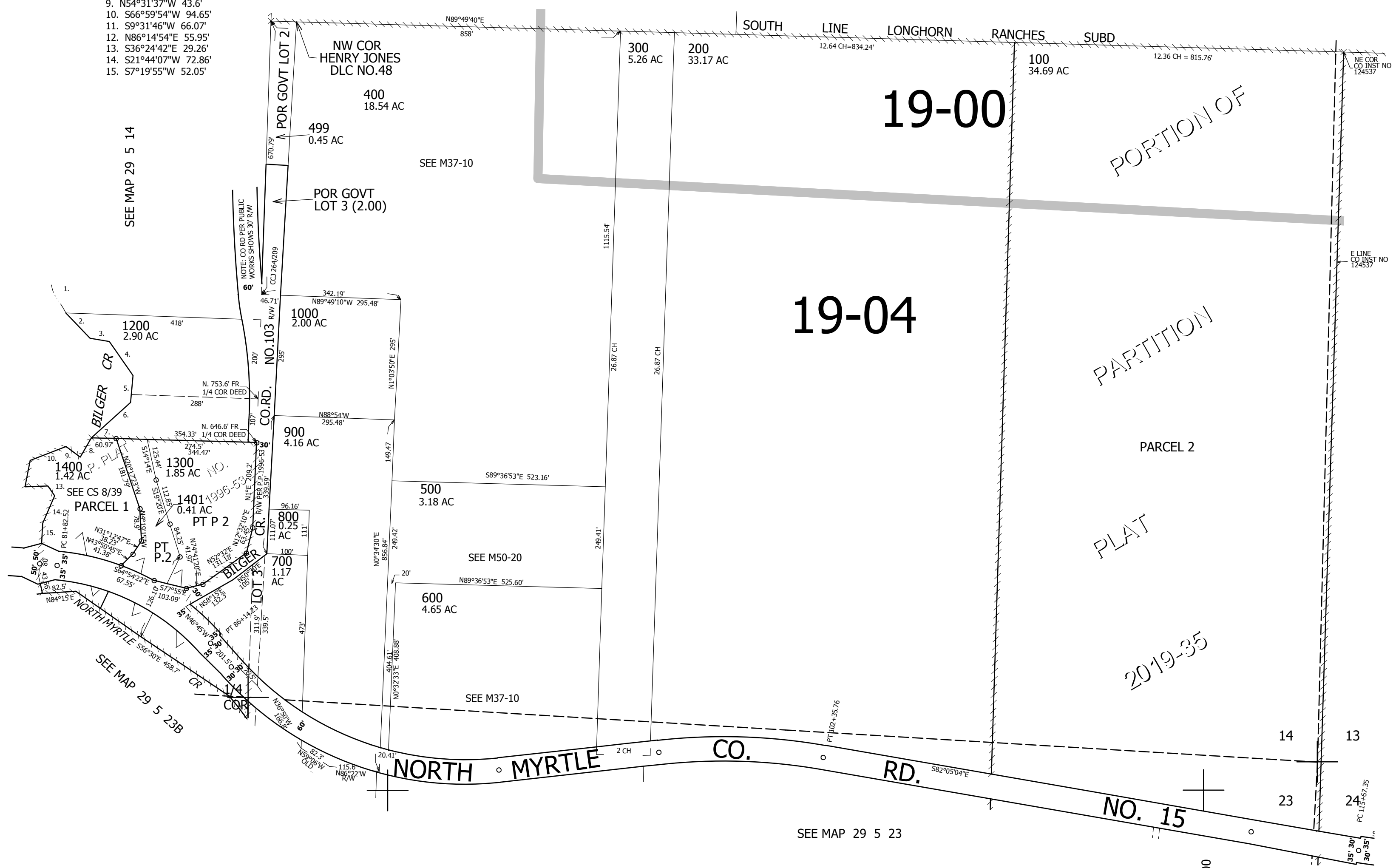
CANCELLED NO'S 1100

C/L BILGER CREEK

- PER V277 P37
1. S3°35'E 253.9'
 2. S46°07'E 109.56'
 3. S82°06'E 48.05'
 4. S37°26'E 101.38'
 5. S5°02'E 69.96'
 6. S28°34'W 74.05'
 7. S34°48'W 125.73'

- PER PP 1996-53
8. S27°48'09"E 54.6'
 9. N54°31'37"W 43.6'
 10. S66°59'54"W 94.65'
 11. S9°31'46"W 66.07'
 12. N86°14'54"E 55.95'
 13. S36°24'42"E 29.26'
 14. S21°44'07"W 72.86'
 15. S7°19'55"W 52.05'

SEE MAP 29 5 14



SEE MAP 29 5 14

SEE MAP 29 5 13C

SEE MAP 29 5 23B

SEE MAP 29 5 23

4,187,000

513,000

29 5 14D