

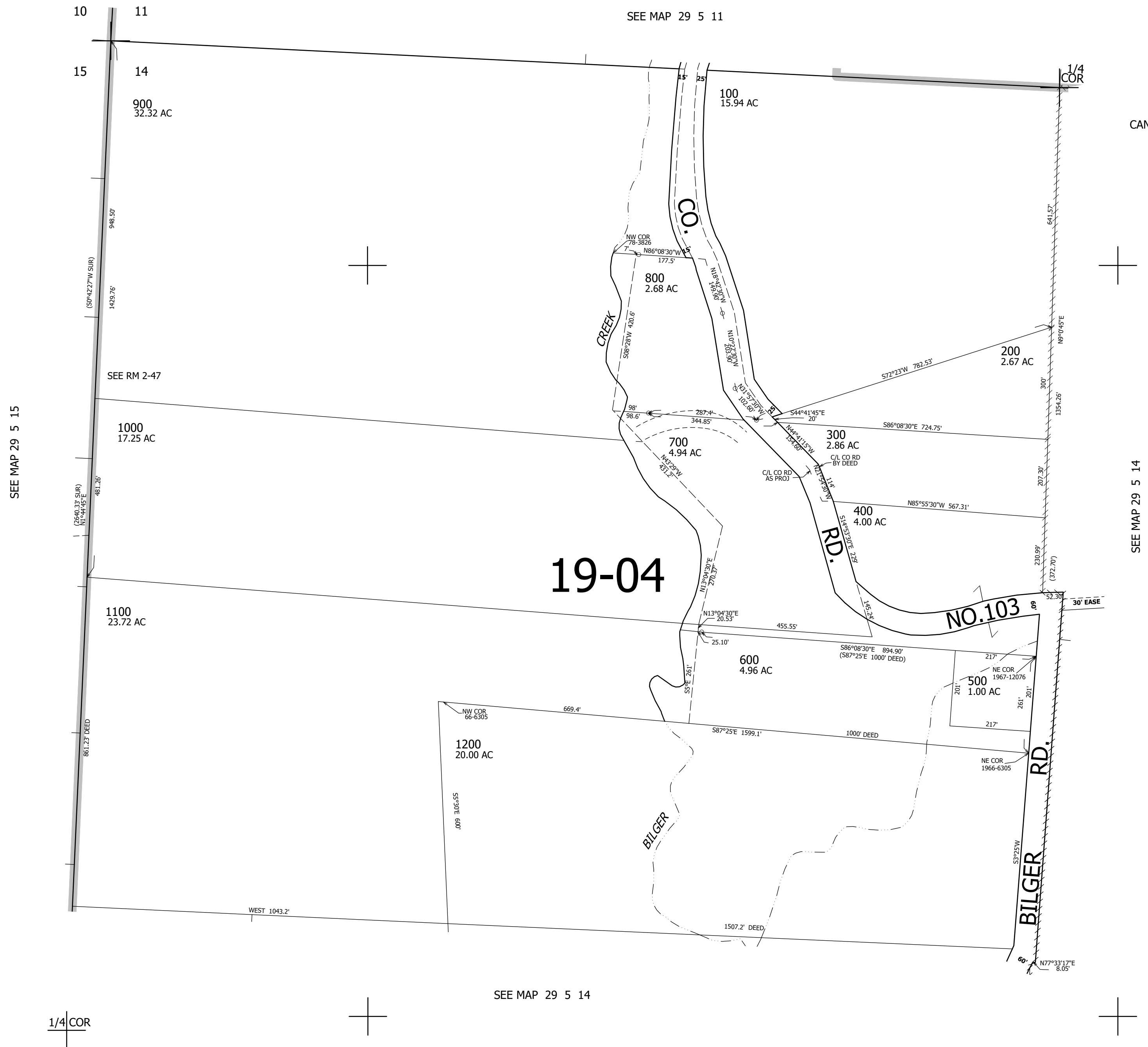
THIS MAP WAS PREPARED FOR ASSESSMENT PURPOSE ONLY.

NW1/4 SEC.14 T29S. R.5W. W.M.  
DOUGLAS COUNTY

1" = 200'

REVISED ON  
7-20-06

29 5 14B



CANCELLED NO'S

1/4 COR

SEE MAP 29 5 14

516,000

CEN SEC

4,185,000

29 5 14B