

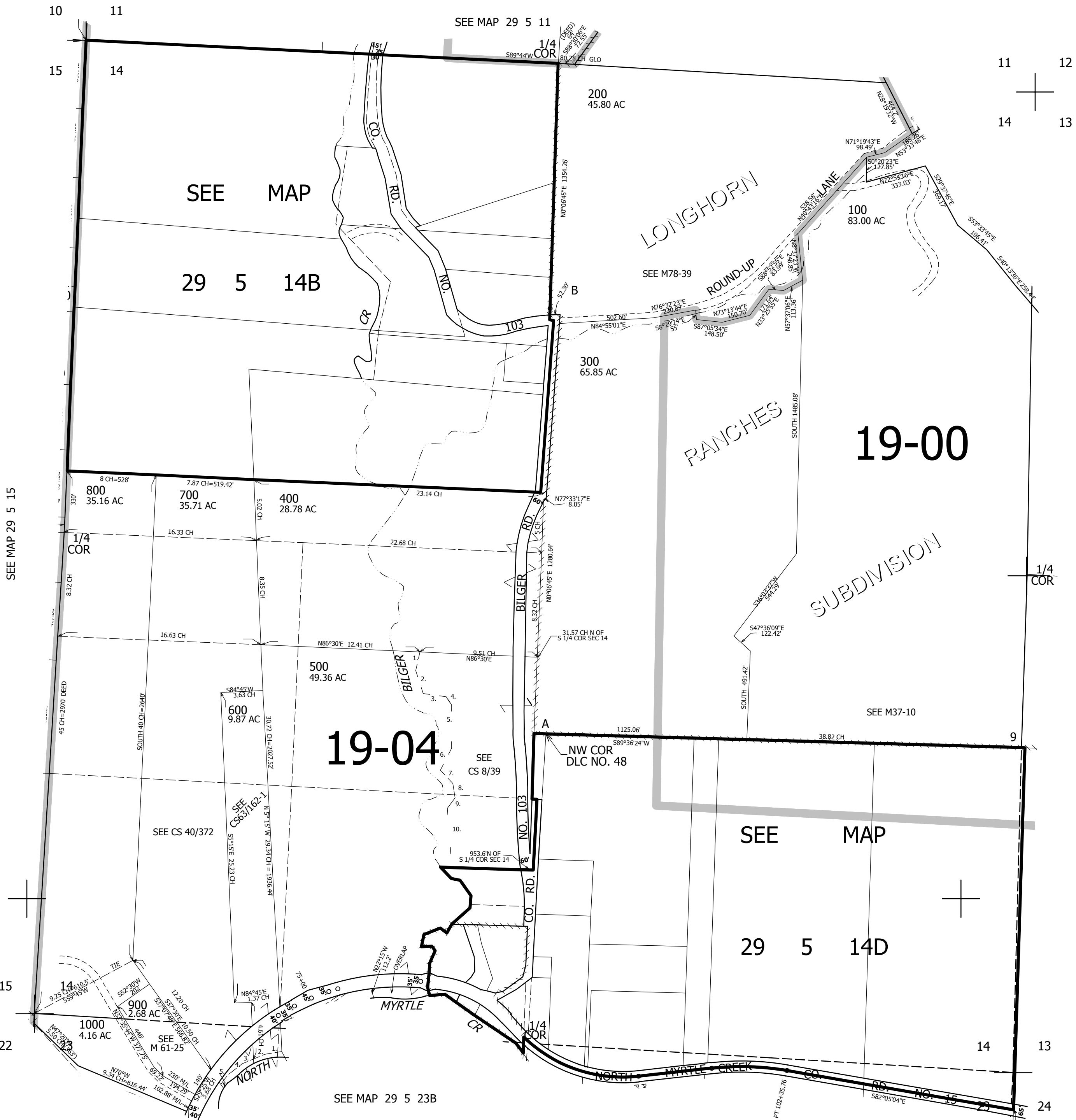
THIS MAP WAS PREPARED FOR ASSESSMENT PURPOSE ONLY.

SEC.14 T29S. R.5W. W.M. DOUGLAS COUNTY

REVISED ON 2-10-15

29 5 14 & INDEX

1" = 400'



SEE MAP 29 5 15

SEE MAP 29 5 13

- PARCEL 500
C/L BILGER CR.
PER V277 P37
1. S13°27'W 102.96'
 2. S17°19'E 128.7'
 3. S81°03'E 124.08'
 4. S33°40'E 50.62'
 5. S0°43'W 234.1'
 6. S28°15'W 131.74'
 7. S42°25'E 98.34'
 8. S7°54'E 77.75'
 9. S37°W 70.16'
 10. S3°35'E 253.9'

- N. MYRTLE CREEK
1. S78°15'W 1.33 CH
 2. S64°45'W 1.00 CH
 3. S64°45'W 1.00 CH
 4. S49°30'W 1.51 CH
 5. S33°W 0.92 CH

19-04

19-00

SEE MAP

29 5 14D

SEE MAP 29 5 23B

SEE MAP 29 5 23

CANCELLED NO'S

514,000

SEE MAP 29 5 13C

4,187,000

29 5 14 & INDEX