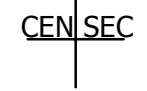
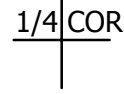


THIS MAP WAS PREPARED FOR ASSESSMENT PURPOSE ONLY.

SW1/4 SEC.13 T29S. R.5W. W.M. DOUGLAS COUNTY 1" = 200'

REVISED ON 2-10-15

29 5 13C

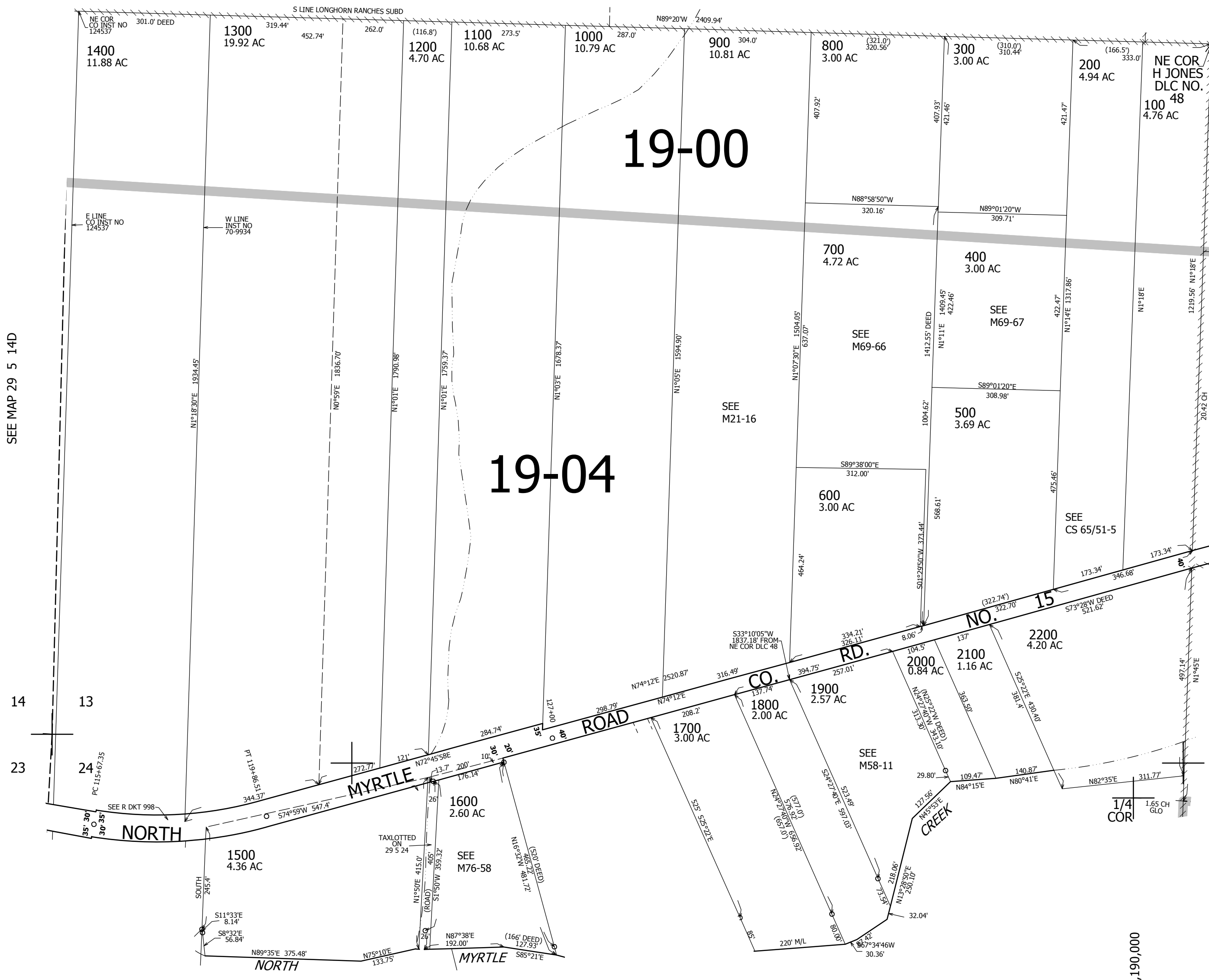


CANCELLED NO'S

SEE MAP 29 5 13

SEE MAP 29 5 14D

SEE MAP 29 5 13



513,000

SEE MAP 29 5 24

4,190,000

29 5 13C