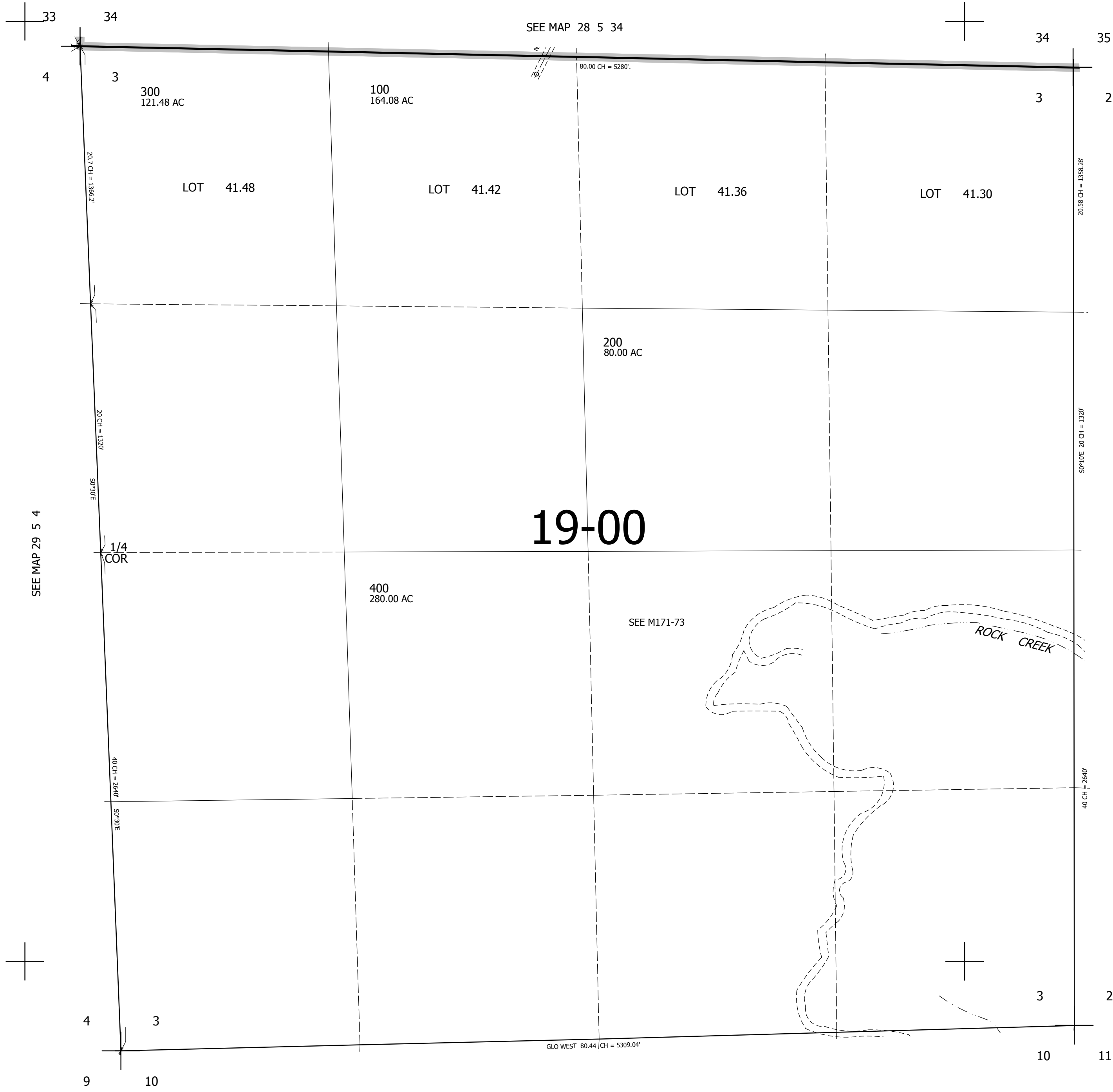


THIS MAP WAS PREPARED FOR ASSESSMENT PURPOSE ONLY.

SEC.3 T29S. R.5W. W.M.  
DOUGLAS COUNTY  
1" = 400'

REVISED ON

29 5 3



CANCELLED NO'S  
200M1

19-00

ROCK CREEK

1/4  
COR

SEE M171-73

524,000

4,182,000

29 5 3