

THIS MAP WAS PREPARED FOR ASSESSMENT PURPOSE ONLY.

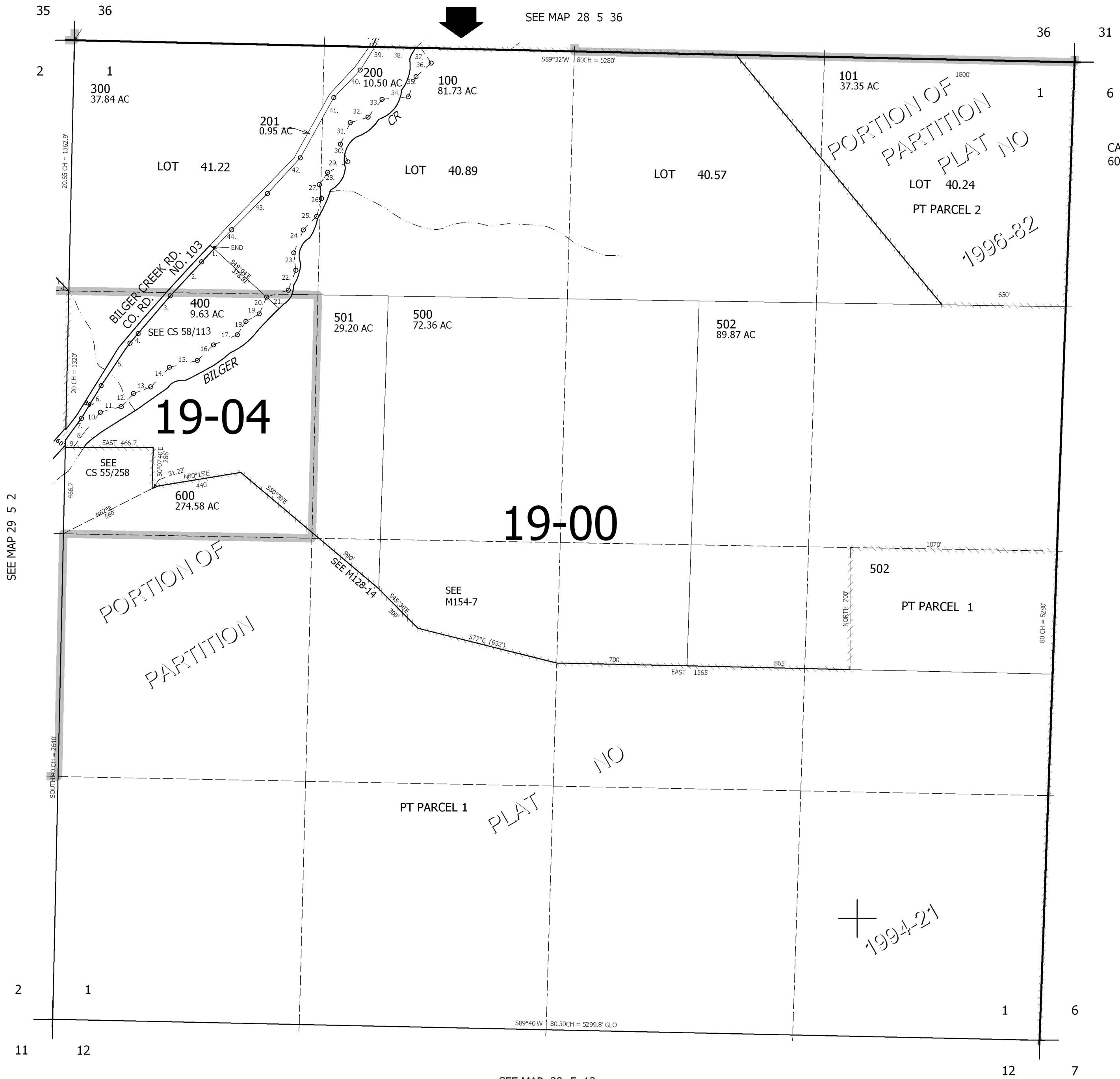
SEC.1 T29S. R.5W. W.M.
DOUGLAS COUNTY
1" = 400'

REVISED ON
2-15-02

29 5 1

PARCEL 200 & 400

1. S42°22'30"W 102'
2. S40°51'30"W 245'
3. S38°14'30"W 325'
4. S38°W 60'
5. S30°47'W 221.33'
6. S30°04'W 191.73'
7. S36°20'W 132'
8. S0°07'40"E 55'
9. EAST 34.5'
10. N35°41'E 235.65'
11. N74°59'E 116.05'
12. N41°53'E 90.06'
13. N68°09'E 109.56'
14. N40°52'E 145.7'
15. N76°44'E 158.67'
16. N46°25'E 112.55'
17. N63°21'E 138.23'
18. N34°39'E 87.62'
19. N58°46'E 80.1'
20. N22°13'E 104.23'
21. N73°48'E 117.53'
22. N17°17'E 119.81'
23. N5°03'W 93.77'
24. N19°26'E 136.64'
25. N41°33'E 101.32'
26. N13°06'E 99.52'
27. N9°55'W 71.96'
28. N31°11'E 84.36'
29. N58°54'E 126.64'
30. N25°22'W 104.04'
31. N23°05'E 127.42'
32. N70°44'E 94.35'
33. N38°E 127.32'
34. N82°50'E 142.15'
35. N20°48'E 103.84'
36. N43°52'E 115.6'
37. N33°53'W 99.7'
38. S87°44'W 234.23'
39. S29°52'W 196.36'
40. S40°55'W 202.67'
41. S27°33'30"W 369.37'
42. S41°27'30"W 250'
43. S43°07'30"W 275'
44. S42°22'30"W 130'



SEE MAP 29 5 2

SEE MAP 28 5 36

SEE MAP 29 4 6

SEE MAP 29 5 12

CANCELLED NO'S
601 100M1

PORTION OF
PARTITION
PLAT NO
1996-82

PORTION OF
PARTITION
PLAT NO

1994-21

524,000

4,192,000

29 5 1