

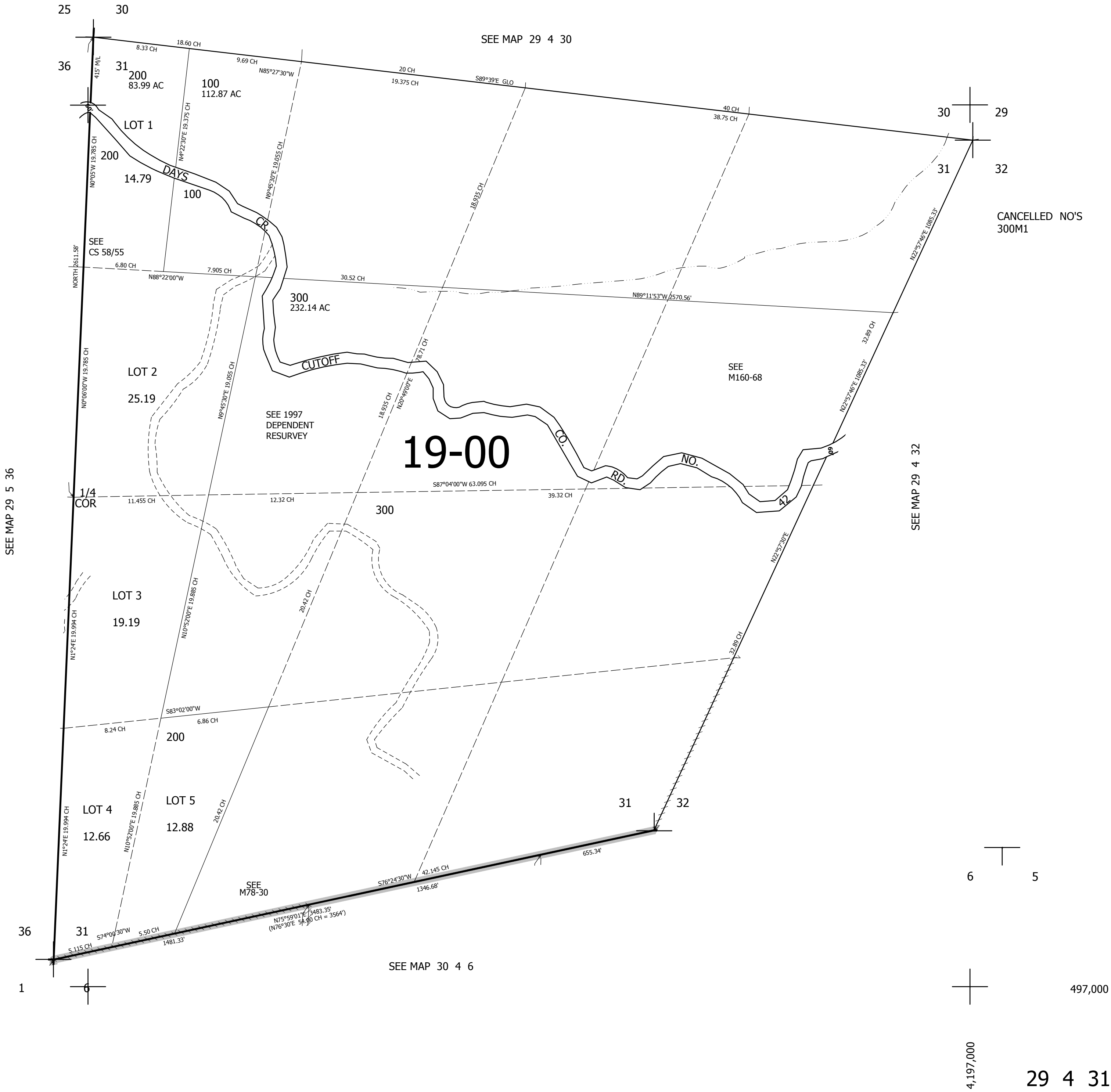
THIS MAP WAS PREPARED FOR ASSESSMENT PURPOSE ONLY.

SEC.31 T.29S. R.4W. W.M. DOUGLAS COUNTY

1" = 400'

REVISED ON 10-25-17

29 4 31



CANCELLED NO'S 300M1

6 5

497,000

4,197,000

29 4 31