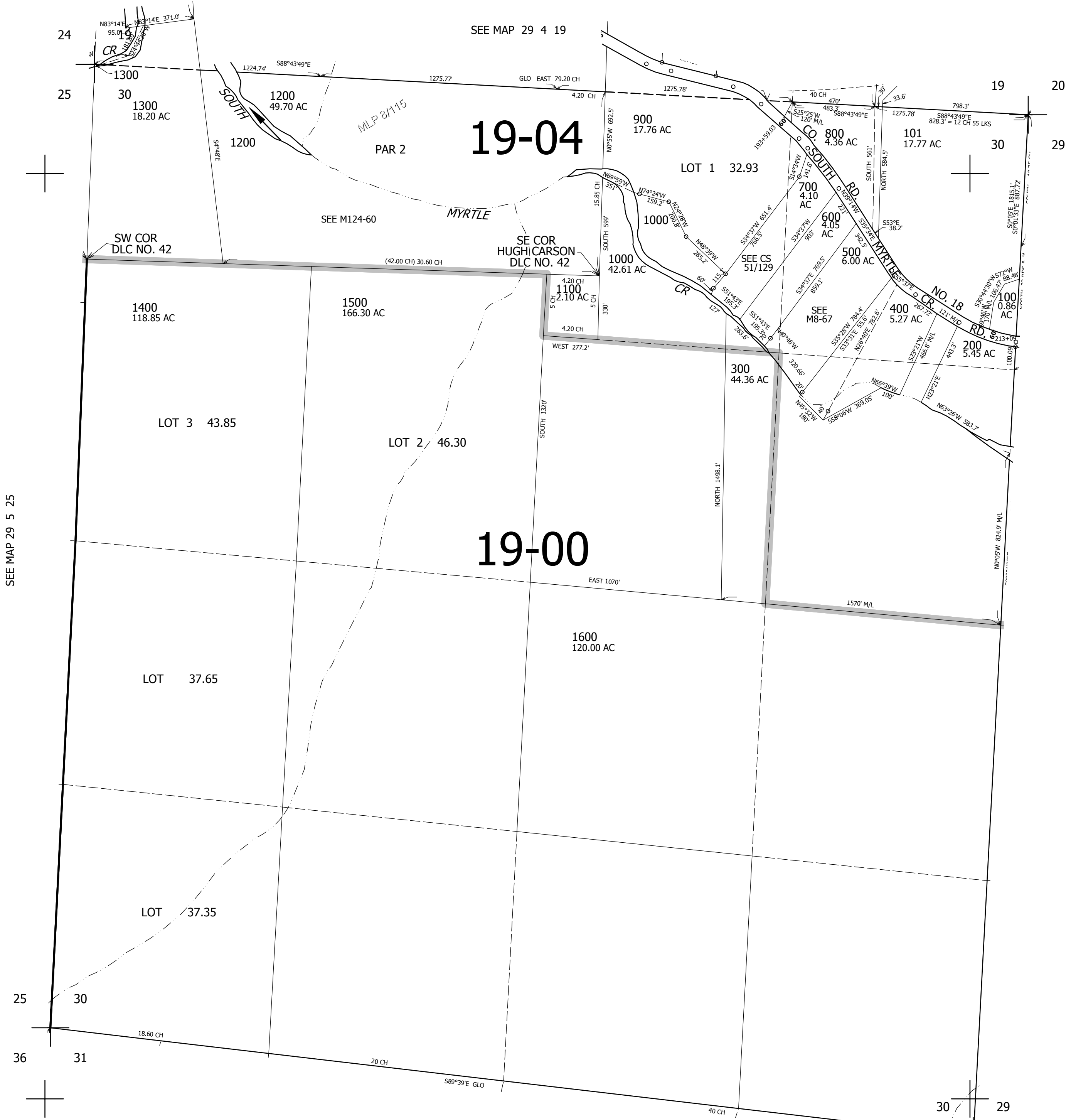


THIS MAP WAS PREPARED FOR ASSESSMENT PURPOSE ONLY.

SEC.30 T.29S. R.4W. W.M.  
DOUGLAS COUNTY  
1" = 400'

REVISED ON  
8-23-11

29 4 30



19-04

19-00

CANCELLED NO'S  
1400M1 1600M1

SEE MAP 29 5 25

SEE MAP 29 4 29

SEE MAP 29 4 31

502,000

4,197,000

29 4 30