

THIS MAP WAS PREPARED FOR ASSESSMENT PURPOSE ONLY.

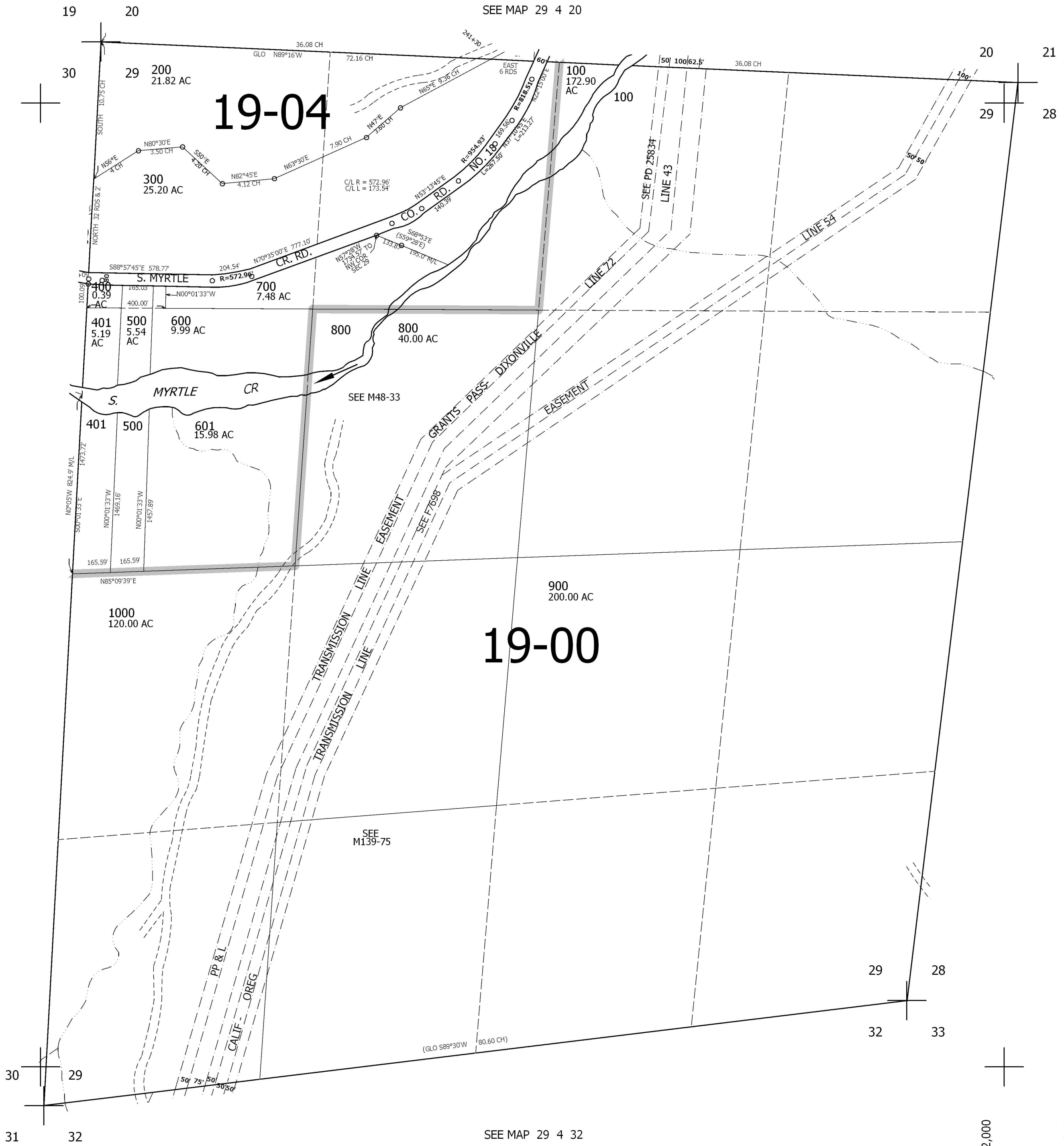
SEC.29 T.29S. R.4W. W.M. DOUGLAS COUNTY

REVISED ON

29 4 29

1" = 400'

CANCELLED NO'S



SEE MAP 29 4 30

SEE MAP 29 4 00

19-00

19-04

502,000

4,202,000

29 4 29

SEE MAP 29 4 32