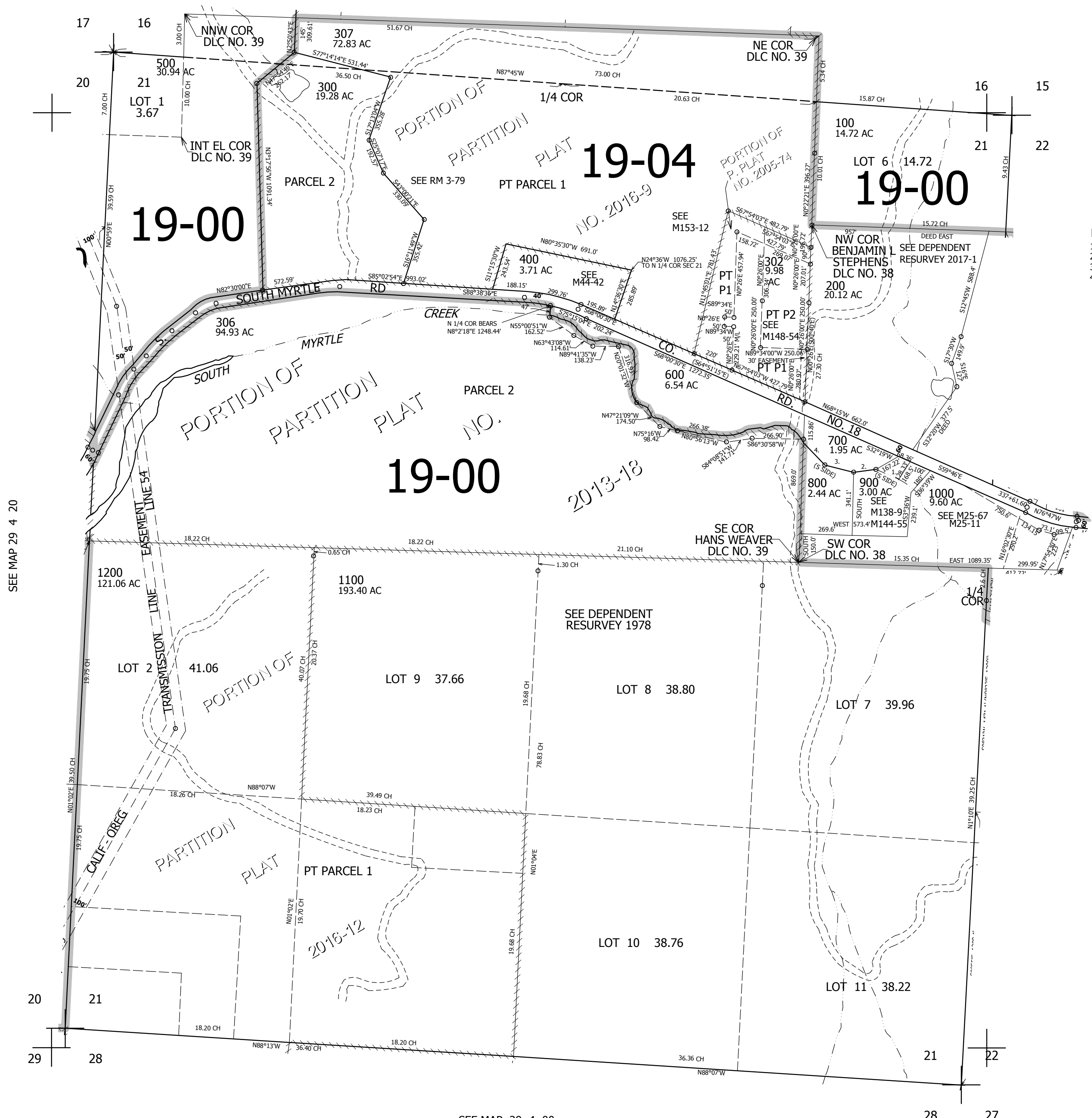


THIS MAP WAS PREPARED FOR ASSESSMENT PURPOSE ONLY.

SEC.21 T.29S. R.4W. W.M. DOUGLAS COUNTY  
1" = 400'

REVISED ON 5-31-16

SEE MAP 29 4 16



CANCELLED NO'S  
301 701 303  
304 305

PARCEL 700  
1. N69°55'W 149.7'  
2. S81°49'W 119.9'  
3. N77°39'W 148.7'  
4. N51°W 157.9'

SEE MAP 29 4 20

SEE MAP 29 4 22

SEE MAP 29 4 00

507,000

4,207,000