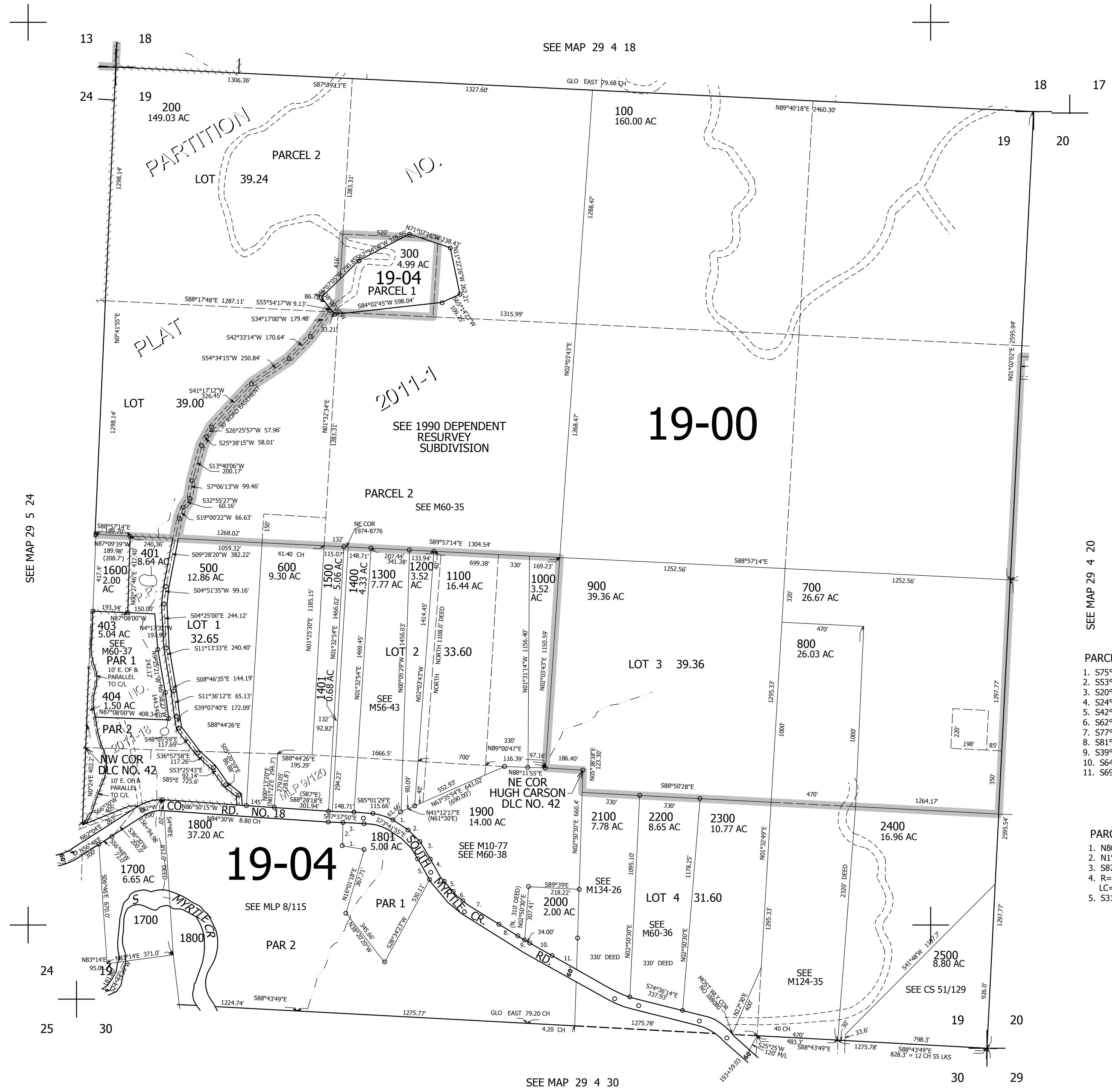


THIS MAP WAS PREPARED FOR ASSESSMENT PURPOSE ONLY.

SEC.19 T.29S. R.4W. W.M.
DOUGLAS COUNTY
1" = 400'

REVISED ON
8-23-11

29 4 19



CANCELLED NO'S
501 405 700A1
201 202 301
302 303 304
400 402 406
407 502 503
601 602 408

SEE MAP 29 4 20

PARCEL 1900
1. S75°18'E 87'
2. S53°24'E 66.8'
3. S20°01'E 102.3'
4. S24°23'E 178.8'
5. S42°49'E 242.8'
6. S62°55'E 98.8'
7. S77°41'E 93.8'
8. S81°33'E 95.92'
9. S39°27'E 127.46'
10. S64°49'E 125.22'
11. S69°24'E 88.76'

PARCEL 1801
1. N80°22'36"W 123.21'
2. N1°35'25"E 121.2'
3. S87°25'20"E 108.58'
4. R=385'
LC=S59°10'15"E 357.7'
5. S31°29'25"E 131.99'

508,000

SEE MAP 29 5 24

SEE MAP 29 4 18

SEE MAP 29 4 30

4,197,000

29 4 19