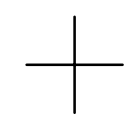
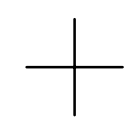
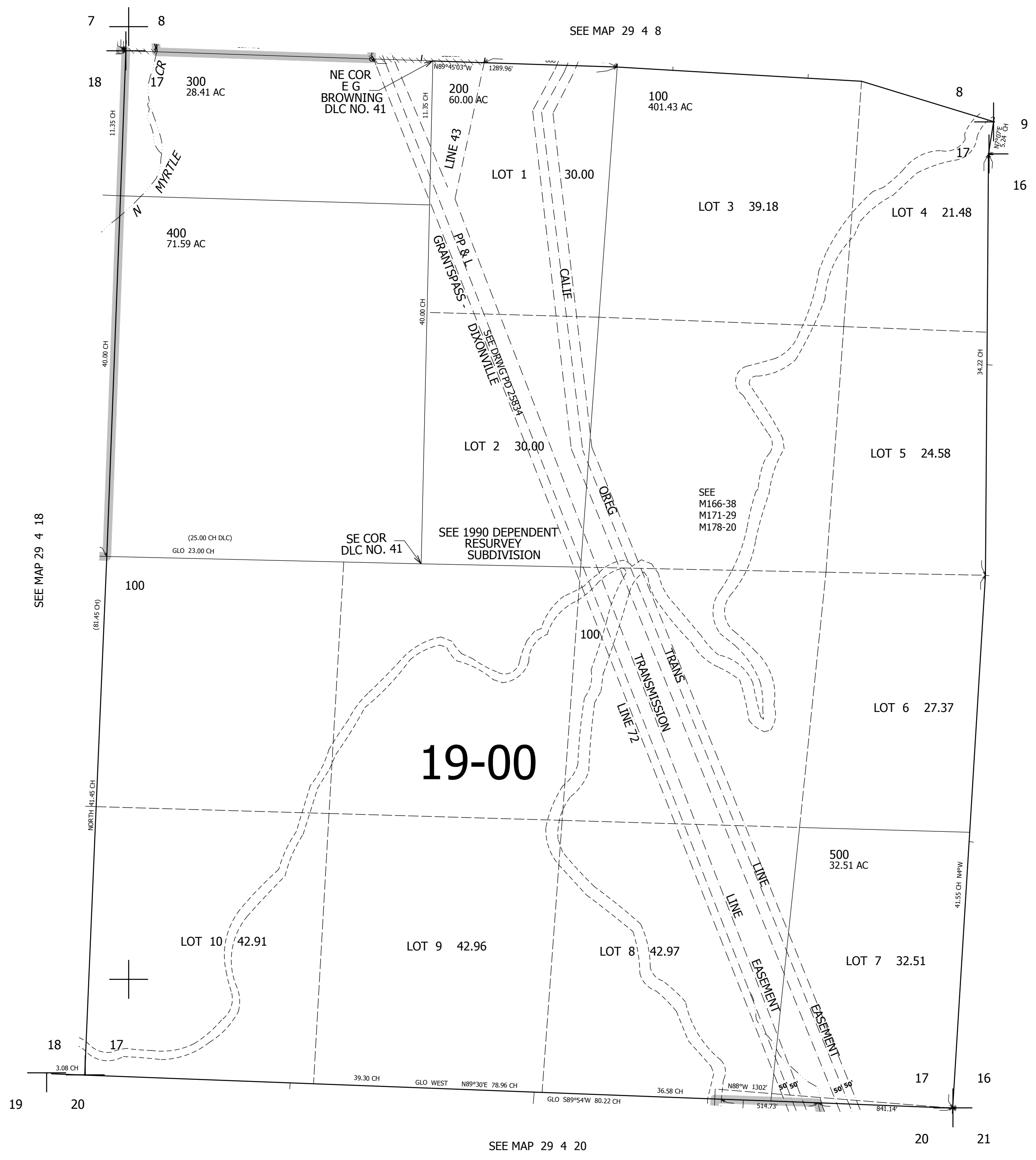


THIS MAP WAS PREPARED FOR ASSESSMENT PURPOSE ONLY.

SEC.17 T.29S. R.4W. W.M.  
DOUGLAS COUNTY  
1" = 400'

REVISED ON

29 4 17



CANCELLED NO'S

513,000

SEE MAP 29 4 20

20 21

4,203,000

29 4 17