

THIS MAP WAS PREPARED FOR ASSESSMENT PURPOSE ONLY.

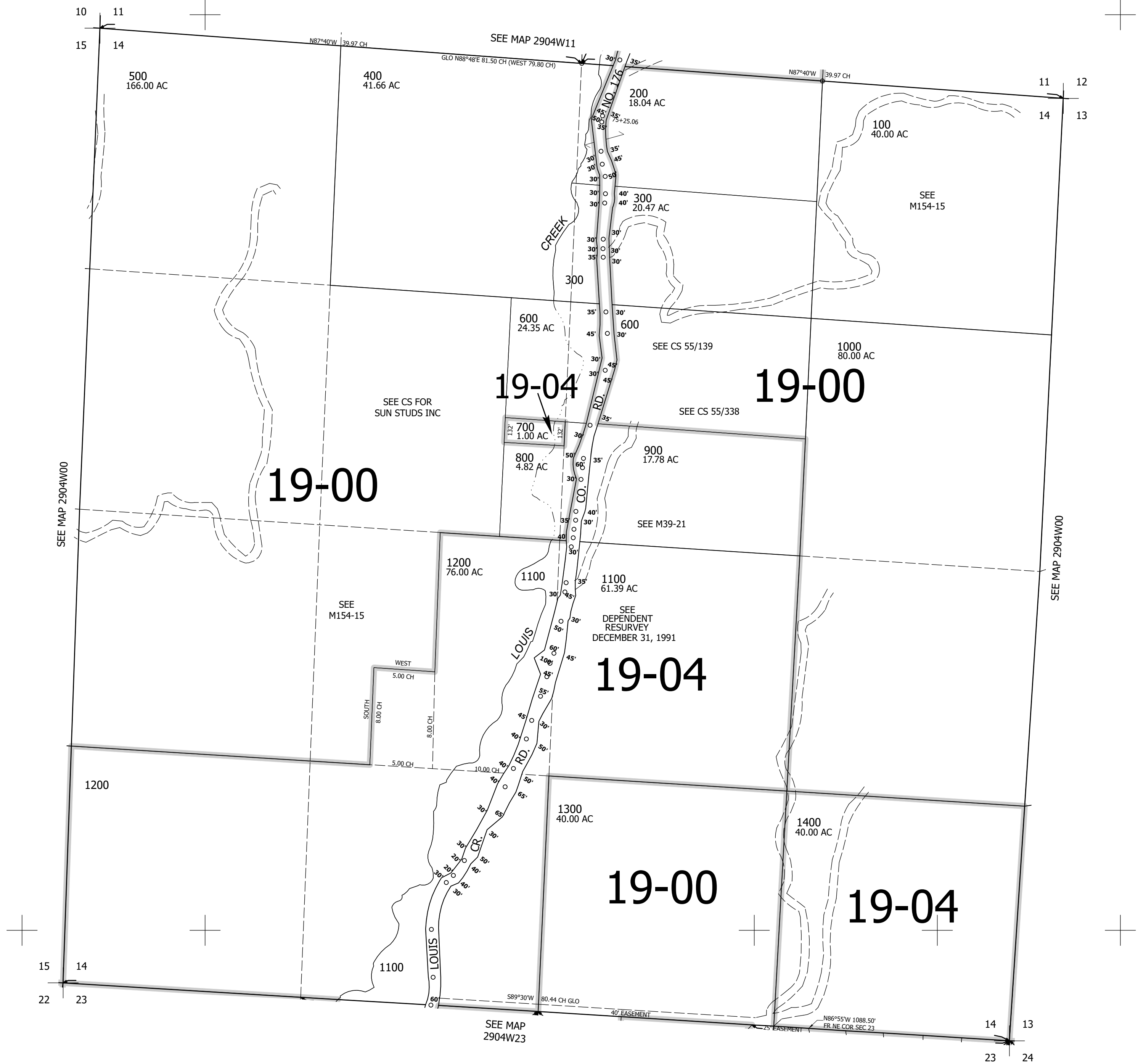
Upper Left:
123°9'29"W 43°3'22"N
4211035E 517663N ft

SEC.14 T.29S. R.04W. W.M.
DOUGLAS COUNTY
1" = 400'

Date Exported 2025-10-07

290414

CANCELLED NOS:



290414

Lower Right:
123°7'40"W 43°2'16"N
4218884E 510707N ft