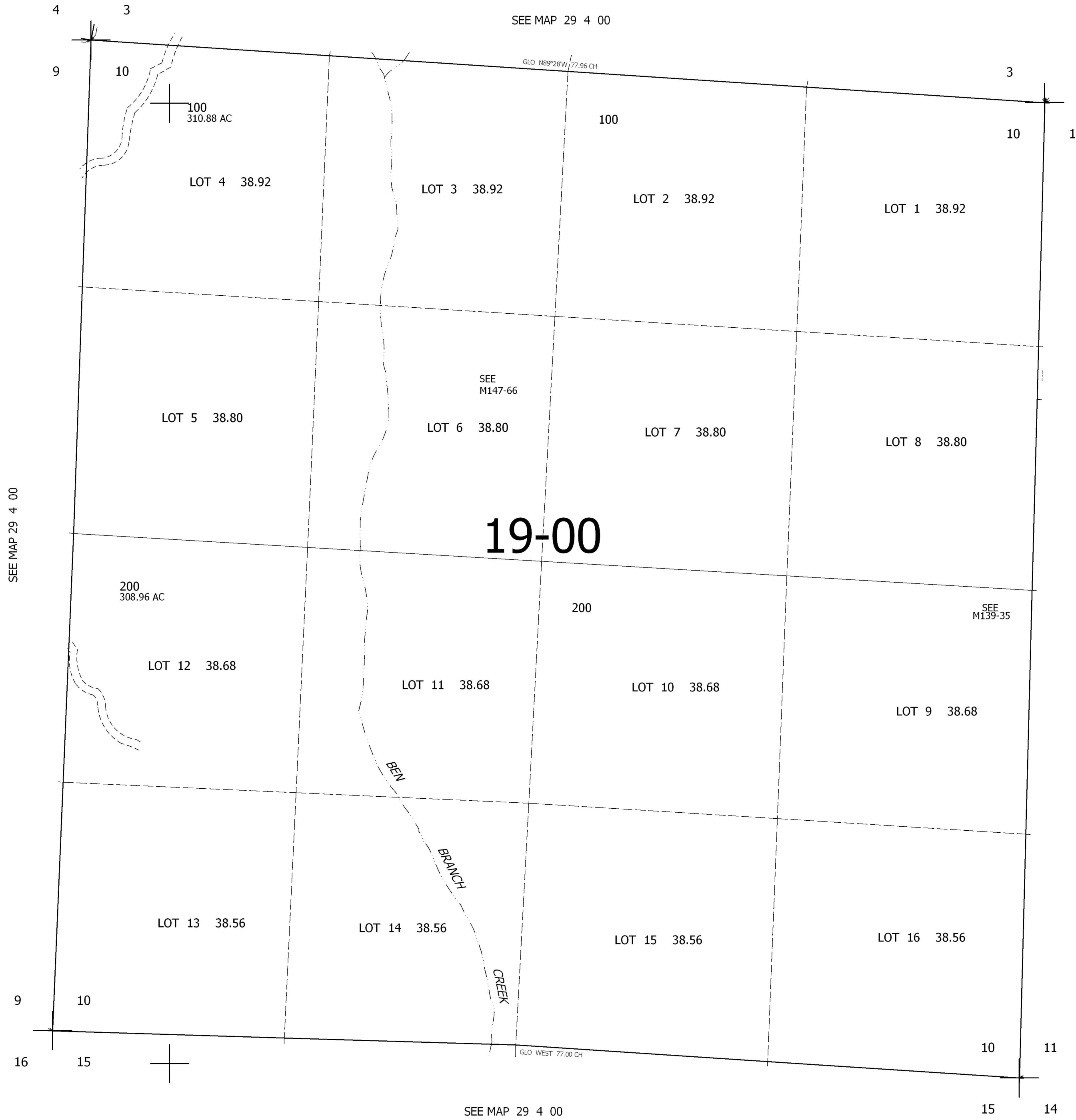


THIS MAP WAS PREPARED FOR ASSESSMENT PURPOSE ONLY.

SEC.10 T.29S. R.4W. W.M.  
DOUGLAS COUNTY  
1" = 400'

REVISED ON

29 4 10



CANCELLED NO'S  
100M1 200M1 200M2

517,000

4,213,000

29 4 10