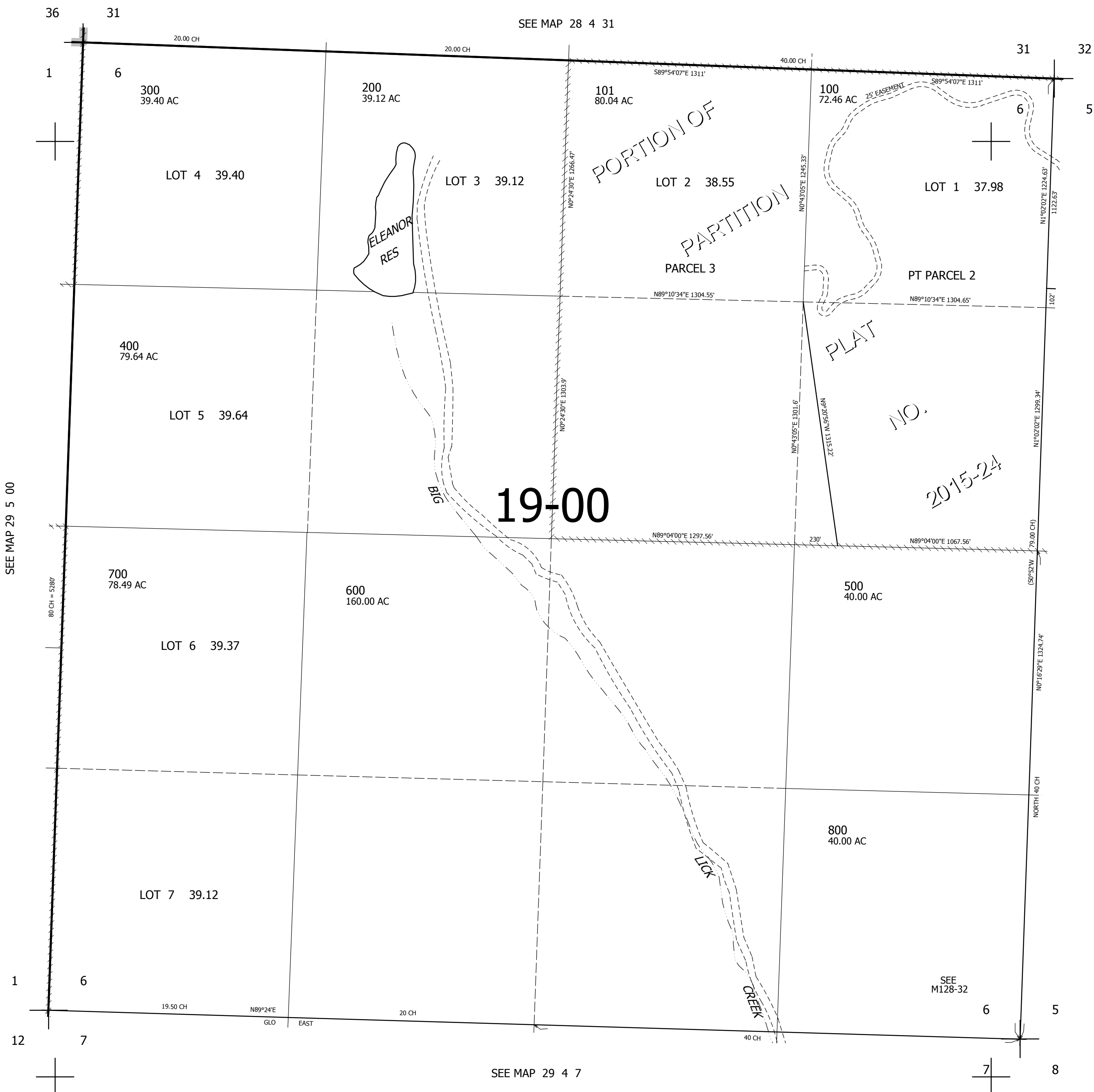


THIS MAP WAS PREPARED FOR ASSESSMENT PURPOSE ONLY.

SEC.6 T.29S. R.4W. W.M. DOUGLAS COUNTY
1" = 400'

REVISED ON 12-17-15

29 4 6



CANCELLED NO'S 400M1 600M1

SEE MAP 29 5 00

SEE MAP 29 4 5

SEE MAP 29 4 7

SEE M128-32

523,000

4,198,000

29 4 6