

THIS MAP WAS PREPARED FOR ASSESSMENT PURPOSE ONLY.

T.29S. R.4W. W.M. DOUGLAS COUNTY 1" = 2000'

REVISED ON 5-31-16

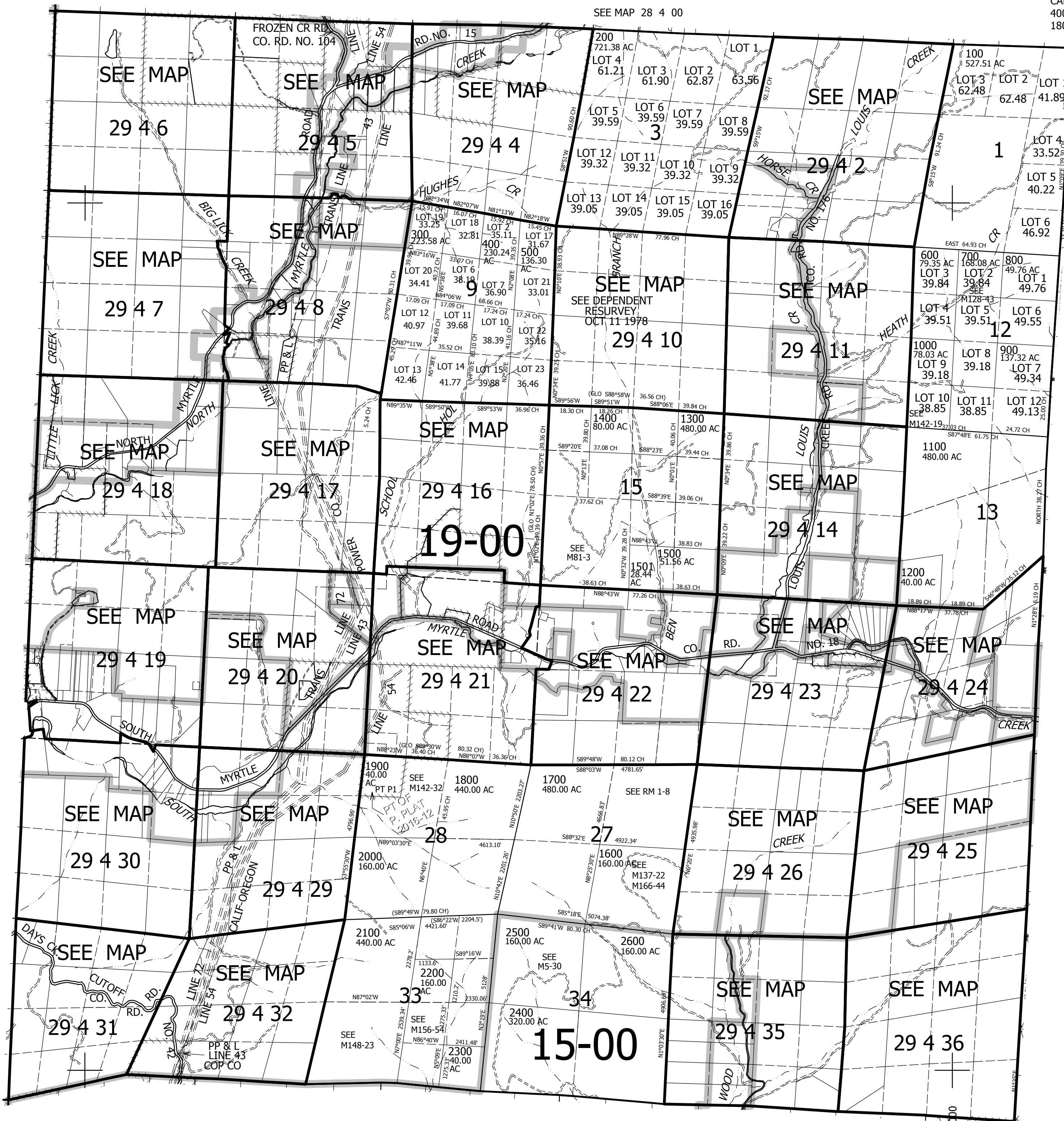
29 4 00

CANCELLED NO'S 400M1 1000M1 1400M1 1800M1 2400M1 2500M1

SEE MAP 28 4 00

SEE MAP 29 5 00

SEE MAP 29 3 00



SEE MAP 30 4 00

498,000

29 4 00 & INDEX

4,219,000