

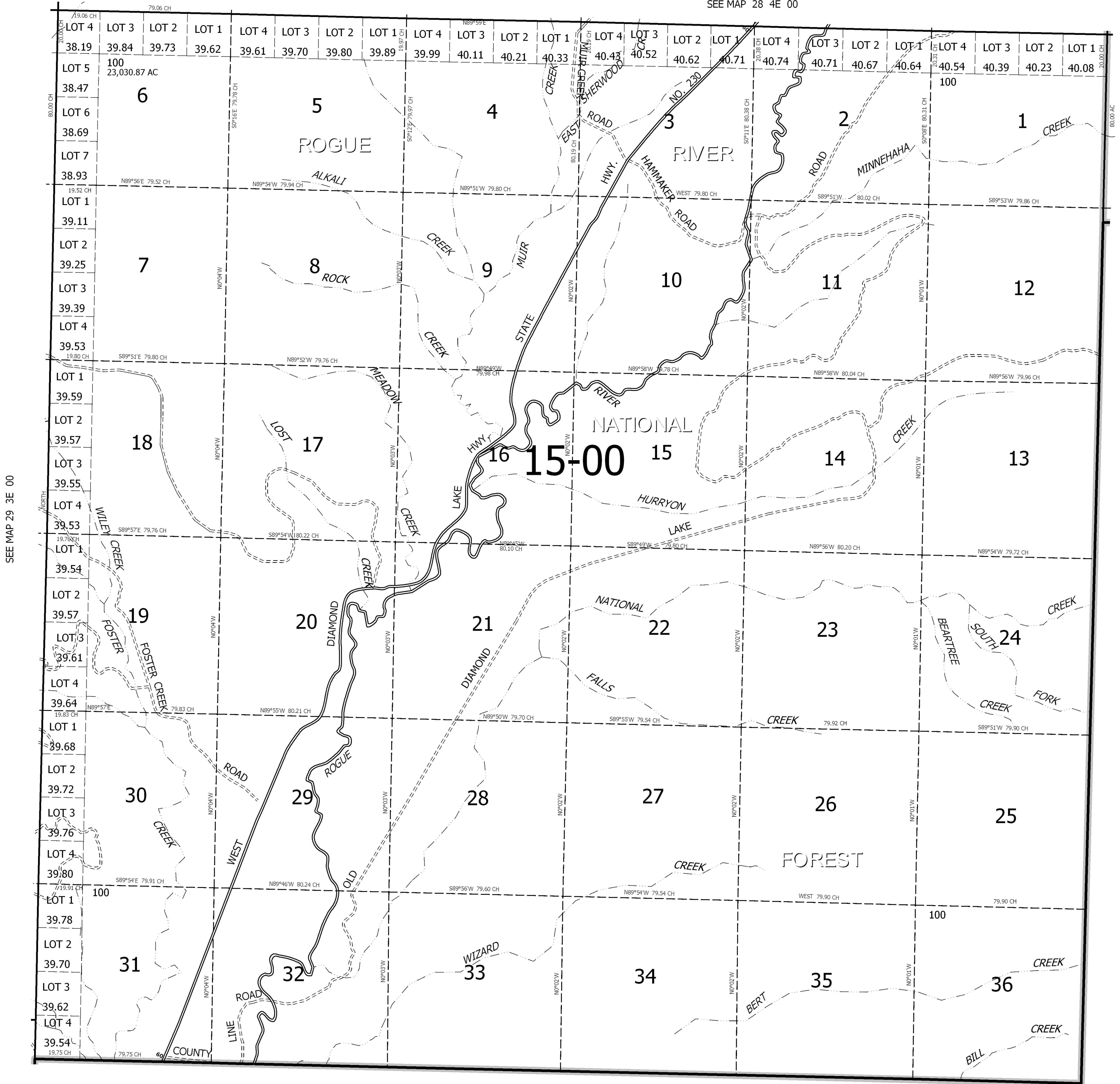
THIS MAP WAS PREPARED FOR ASSESSMENT PURPOSE ONLY.

T.29S. R.4E. W.M.
DOUGLAS COUNTY
1" = 2000'

REVISED ON
11-5-10

29 4E 00

SEE MAP 28 4E 00



SEE MAP 29 3E 00

SEE MAP 29 5E 00

KLAMATH COUNTY

JACKSON COUNTY

29 4E 00