

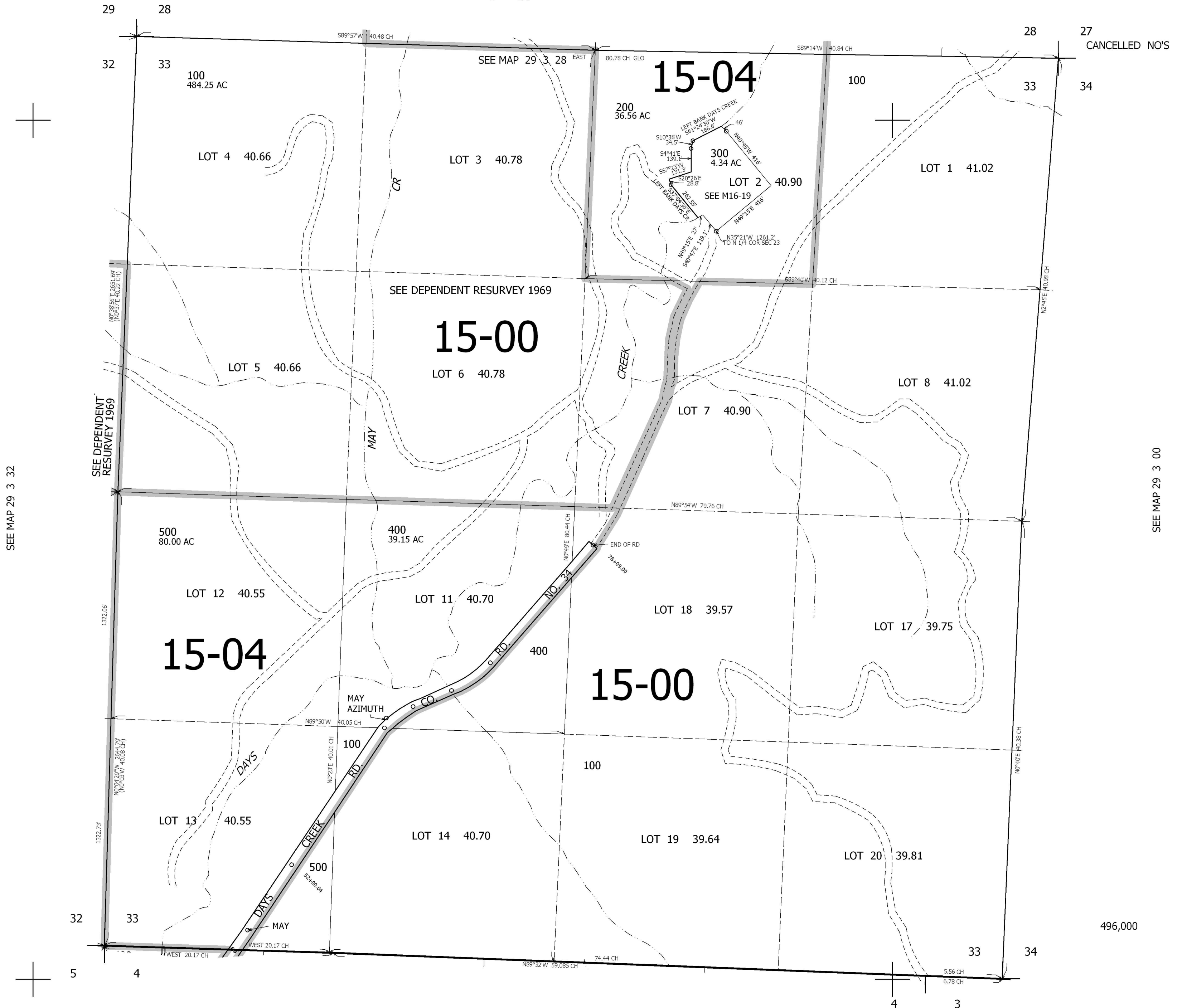
THIS MAP WAS PREPARED FOR ASSESSMENT PURPOSE ONLY.

SEC.33 T.29S. R.3W. W.M.  
DOUGLAS COUNTY

REVISED ON

29 3 33

1" = 400'



27  
CANCELLED NO'S

SEE MAP 29 3 32

SEE MAP 29 3 00

496,000

SEE MAP 30 3 4

29 3 33

4,236,000