

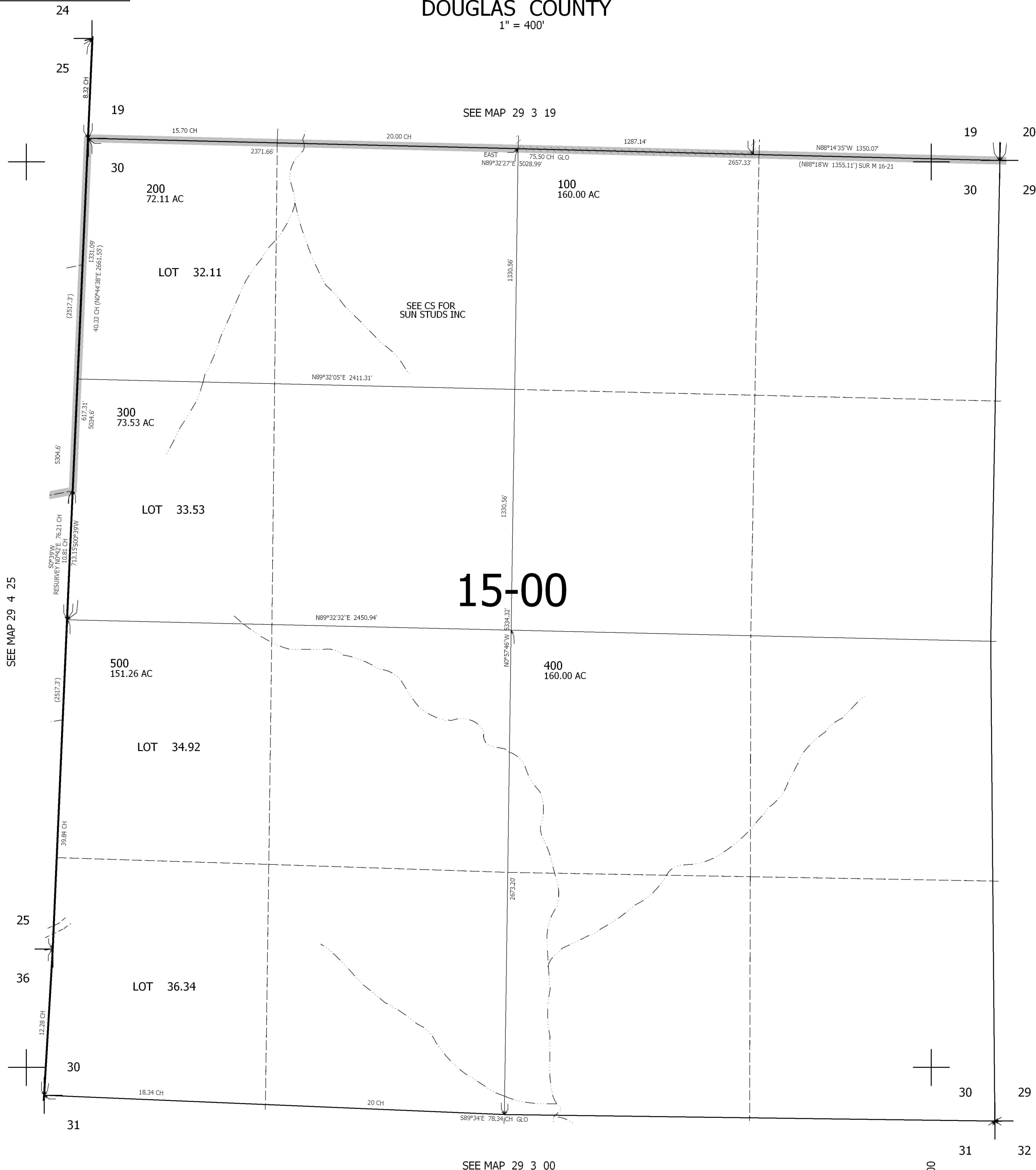
THIS MAP WAS PREPARED FOR ASSESSMENT PURPOSE ONLY.

SEC.30 T.29S. R.3W. W.M.  
DOUGLAS COUNTY

1" = 400'

REVISED ON

29 3 30



CANCELLED NO'S

SEE MAP 29 4 25

SEE MAP 29 3 00

15-00

502,000

SEE MAP 29 3 00

4,226,000

29 3 30