

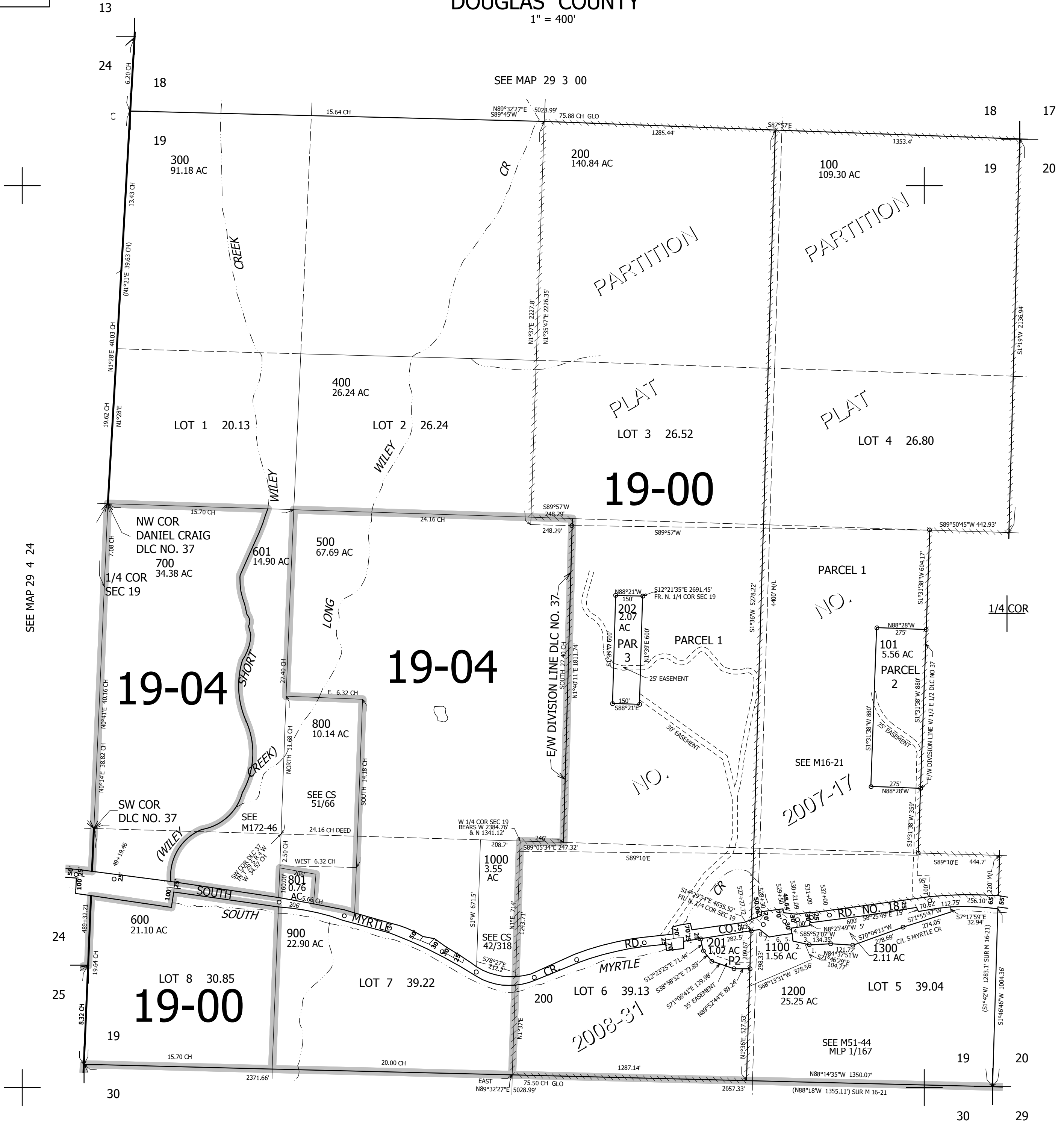
THIS MAP WAS PREPARED FOR ASSESSMENT PURPOSE ONLY.

SEC.19 T.29S. R.3W. W.M. DOUGLAS COUNTY

REVISED ON 7-9-20

29 3 19

1" = 400'



CANCELLED NO'S 300M1

SEE MAP 29 4 24

SEE MAP 29 3 20

- PARCEL 1100
1. 25'
 2. 70.82'
 3. N73°51'32"W 95.82'
 4. N8°25'49"W 70'
 5. 30'
 6. N81°34'11"E 125'
 7. S53°25'55"E 63.64'
 8. 57.79'

SEE MAP 29 3 30

4,226,000

507,000

29 3 19