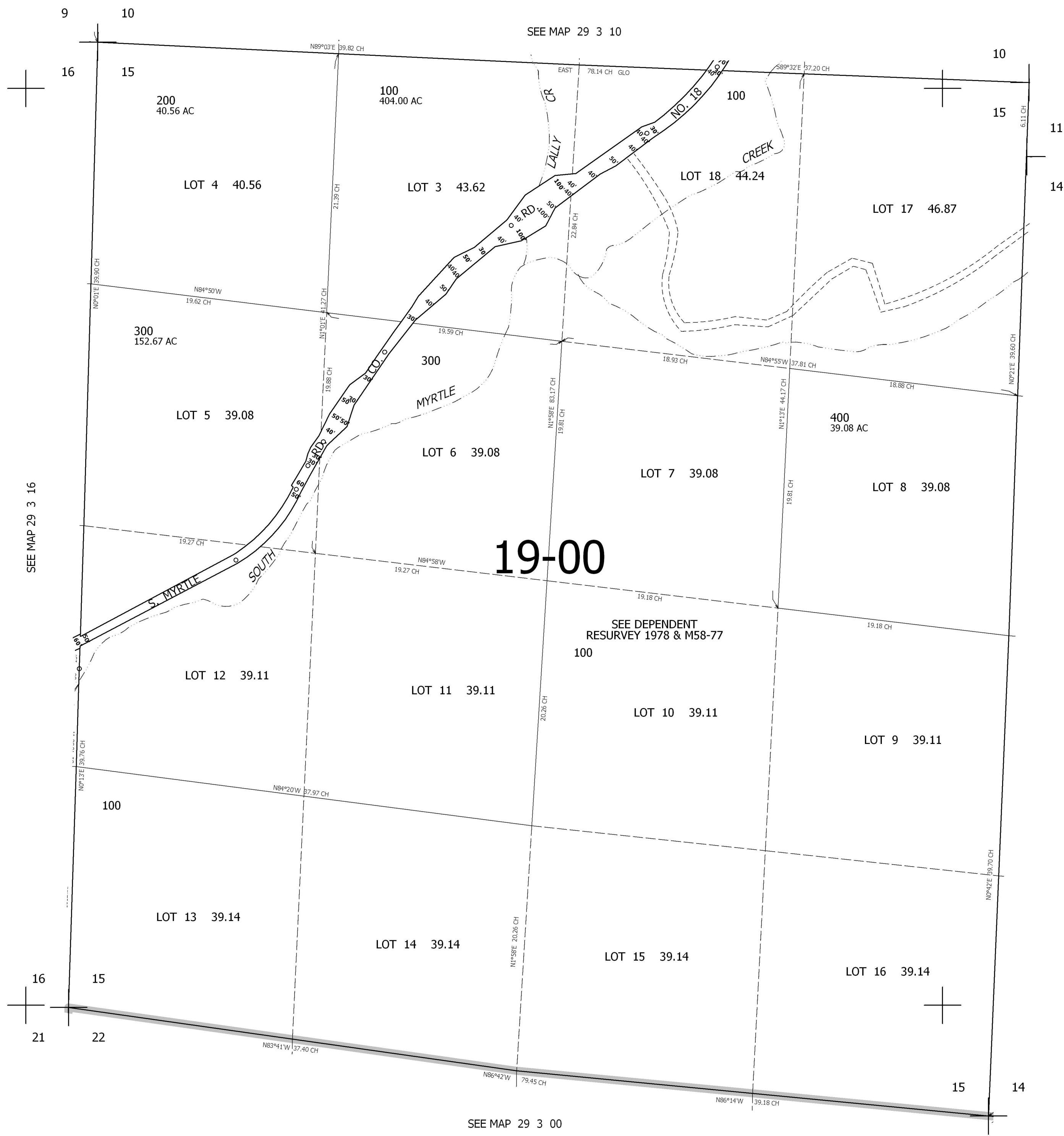


THIS MAP WAS PREPARED FOR ASSESSMENT PURPOSE ONLY.

SEC.15 T.29S. R.3W. W.M.
DOUGLAS COUNTY
1" = 400'

REVISED ON

29 3 15



CANCELLED NO'S
400M1

SEE MAP 29 3 00

SEE MAP 29 3 16

SEE MAP 29 3 10

SEE MAP 29 3 00

512,000

4,242,000

29 3 15