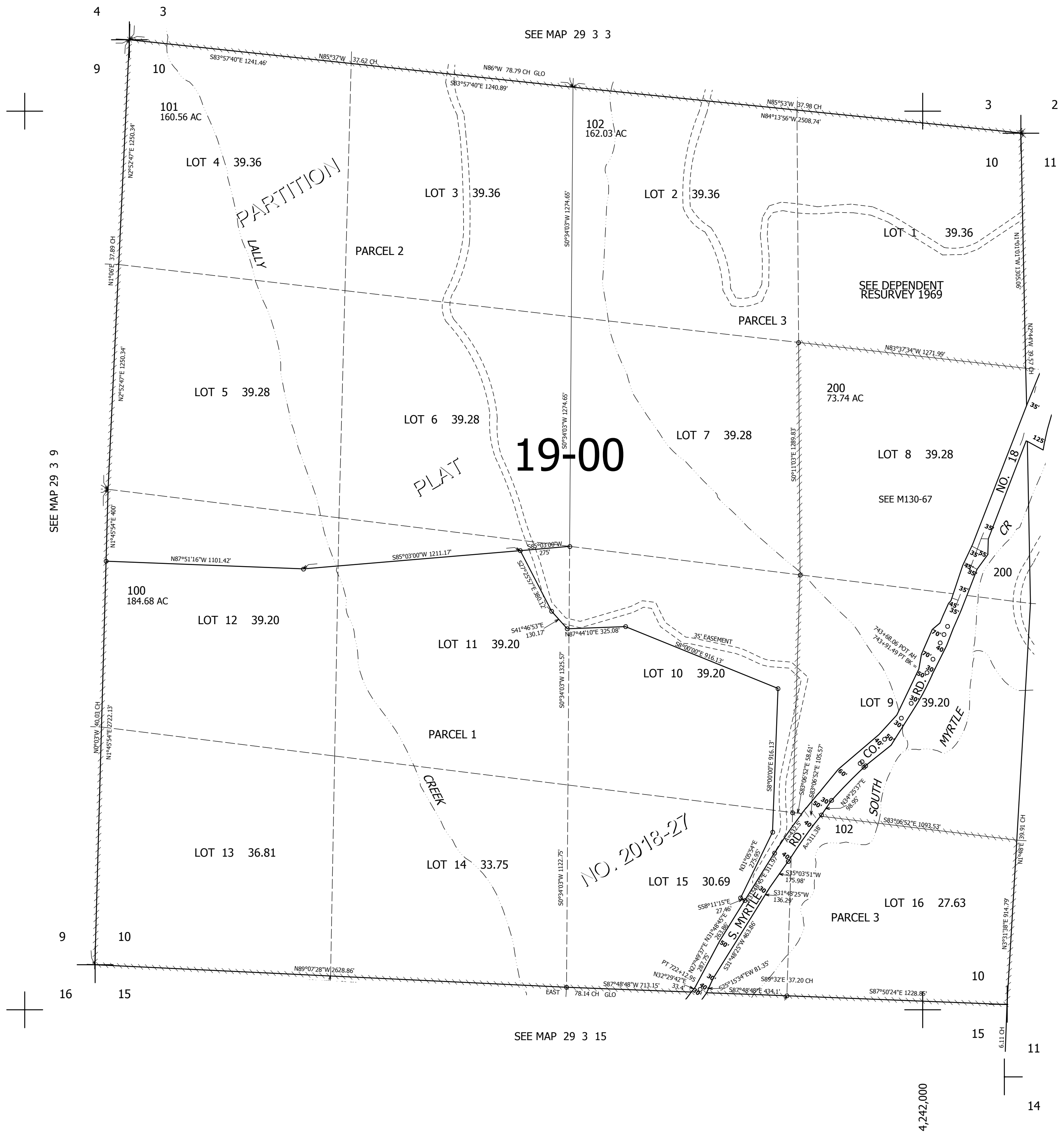


THIS MAP WAS PREPARED FOR ASSESSMENT PURPOSE ONLY.

SEC.10 T.29S. R.3W. W.M.  
DOUGLAS COUNTY  
1" = 400'

REVISED ON  
4-1-20

29 3 10



CANCELLED NO'S  
100A1 200M1

517,000

29 3 10