

THIS MAP WAS PREPARED FOR ASSESSMENT PURPOSE ONLY.

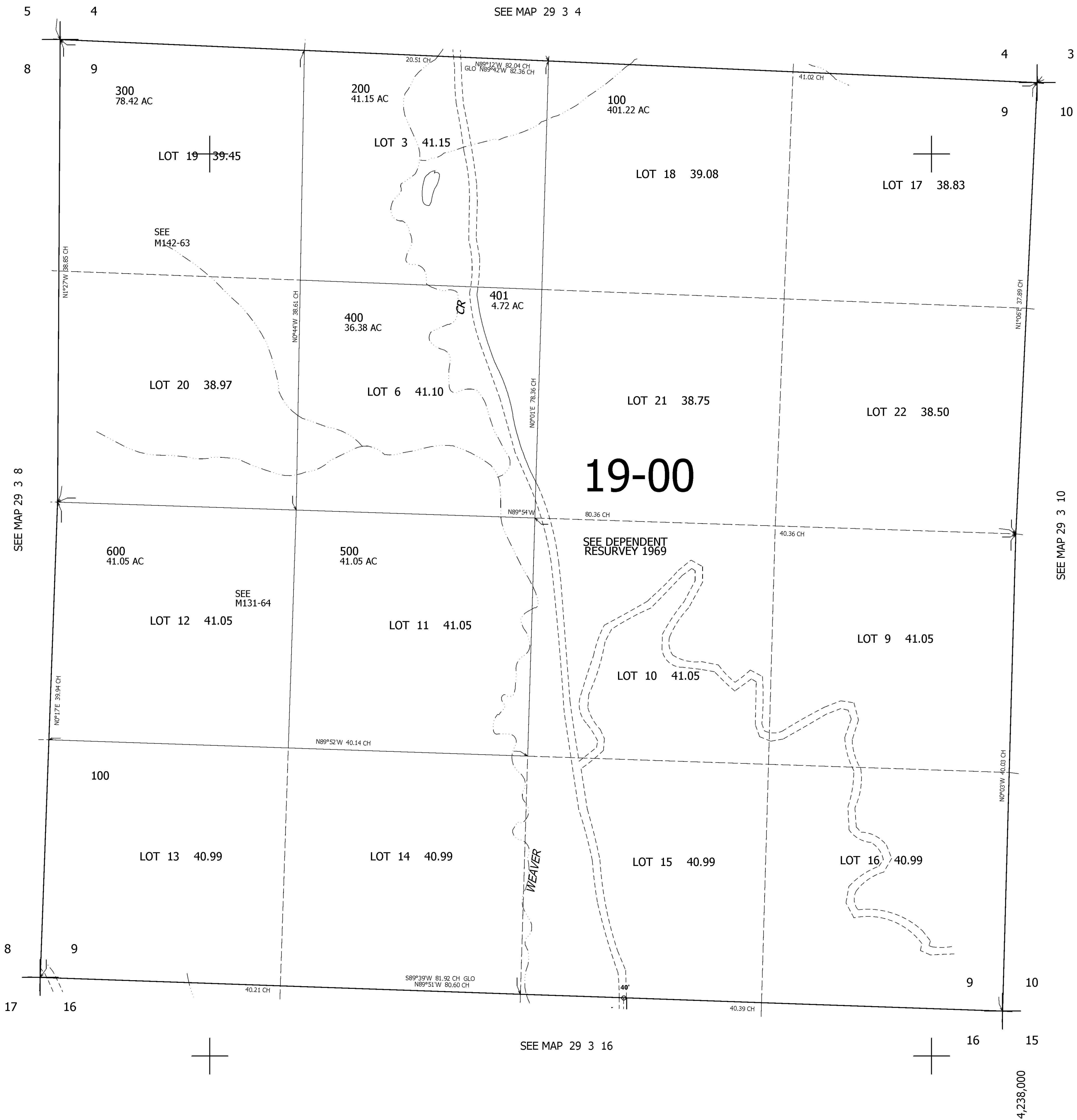
SEC.9 T.29S. R.3W. W.M.
DOUGLAS COUNTY

REVISED ON

29 3 9

1" = 400'

CANCELLED NO'S
600M1



19-00

SEE DEPENDENT
RESURVEY 1969

WEAVER

29 3 9

4,238,000

517,000