

THIS MAP WAS PREPARED FOR ASSESSMENT PURPOSE ONLY.

SEC.4 T.29S. R.3W. W.M.  
DOUGLAS COUNTY

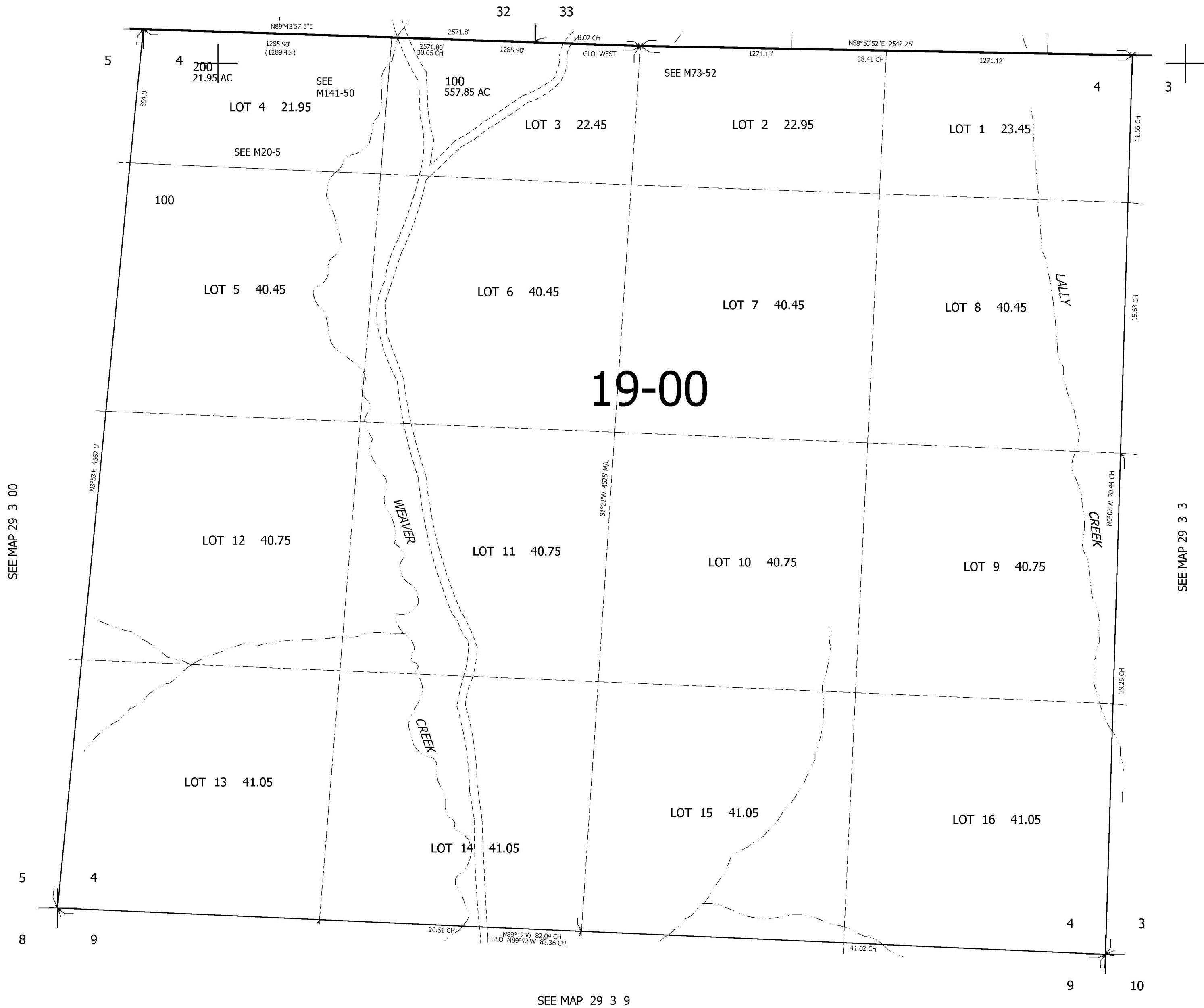
REVISED ON

29 3 4

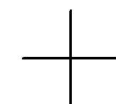
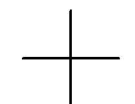
1" = 400'

SEE MAP 28 3 00

CANCELLED NO'S  
100M1



SEE MAP 29 3 9



522,000

4,238,000

29 3 4