

THIS MAP WAS PREPARED FOR ASSESSMENT PURPOSE ONLY.

SEC.3 T.29S. R.3W. W.M.  
DOUGLAS COUNTY

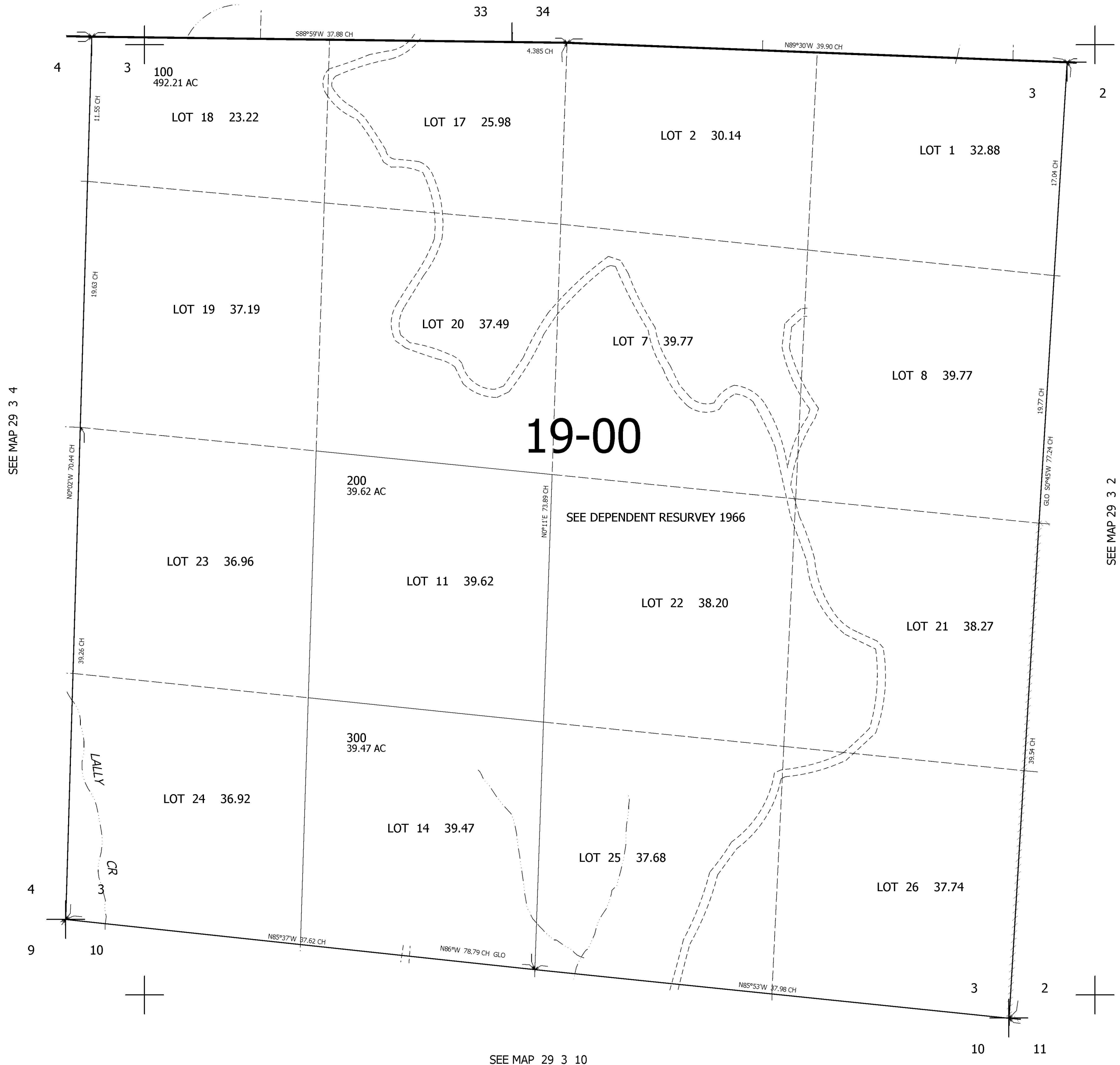
REVISED ON

29 3 3

1" = 400'

CANCELLED NO'S

SEE MAP 28 3 00



522,000

29 3 3

4,243,000