

THIS MAP WAS PREPARED FOR ASSESSMENT PURPOSE ONLY.

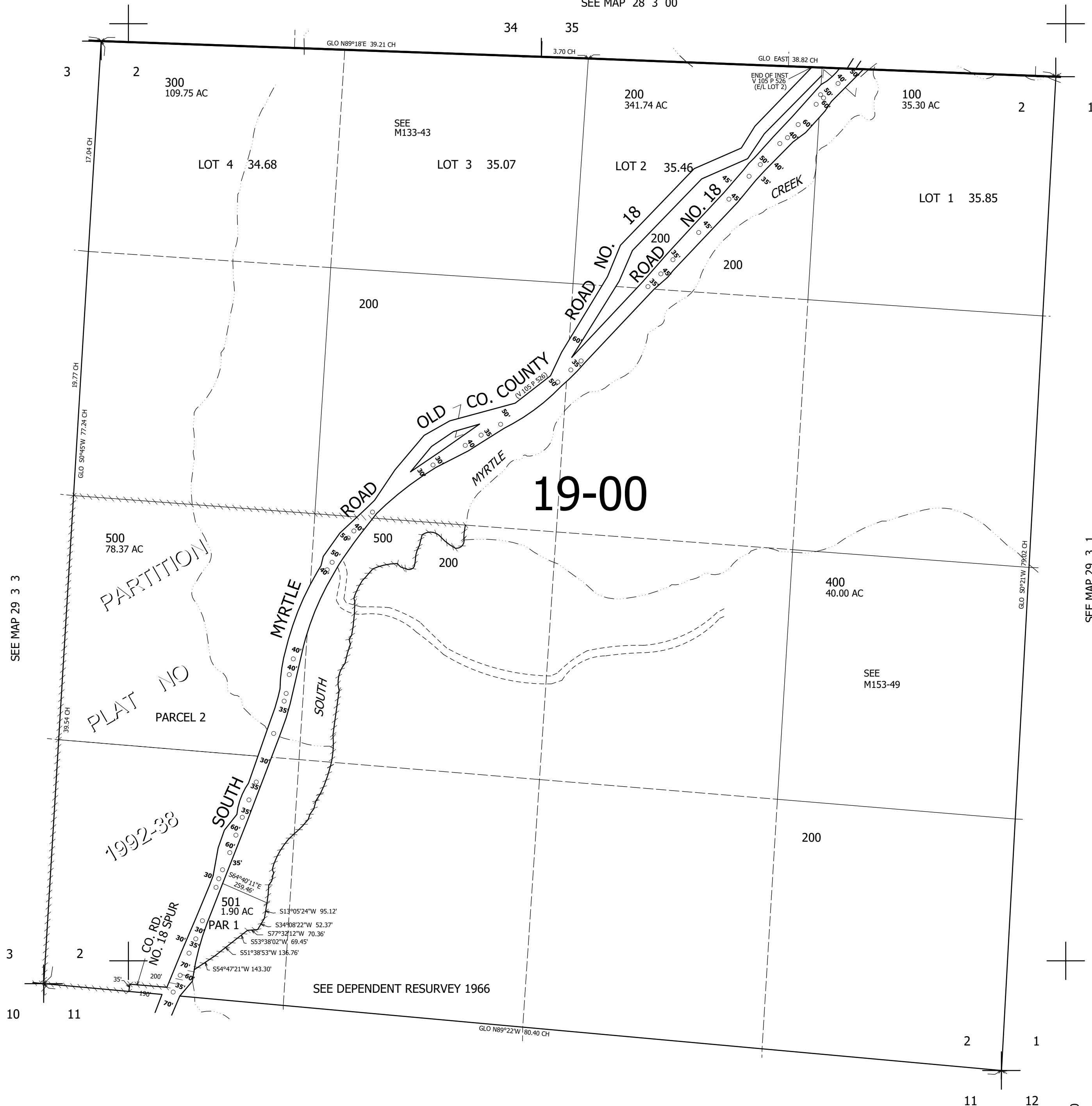
SEC.2 T.29S. R.3W. W.M. DOUGLAS COUNTY

REVISED ON 6-11-92

29 3 2

1" = 400'

SEE MAP 28 3 00



CANCELLED NO'S 600 600M1 200M1 500M1 501M1

19-00

SEE MAP 29 3 3

SEE MAP 29 3 1

522,000

SEE DEPENDENT RESURVEY 1966

SEE MAP 29 3 00

4,248,000

29 3 2