

THIS MAP WAS PREPARED FOR ASSESSMENT PURPOSE ONLY.

T.29S. R.3W. W.M.  
DOUGLAS COUNTY

REVISED ON  
4-28-10

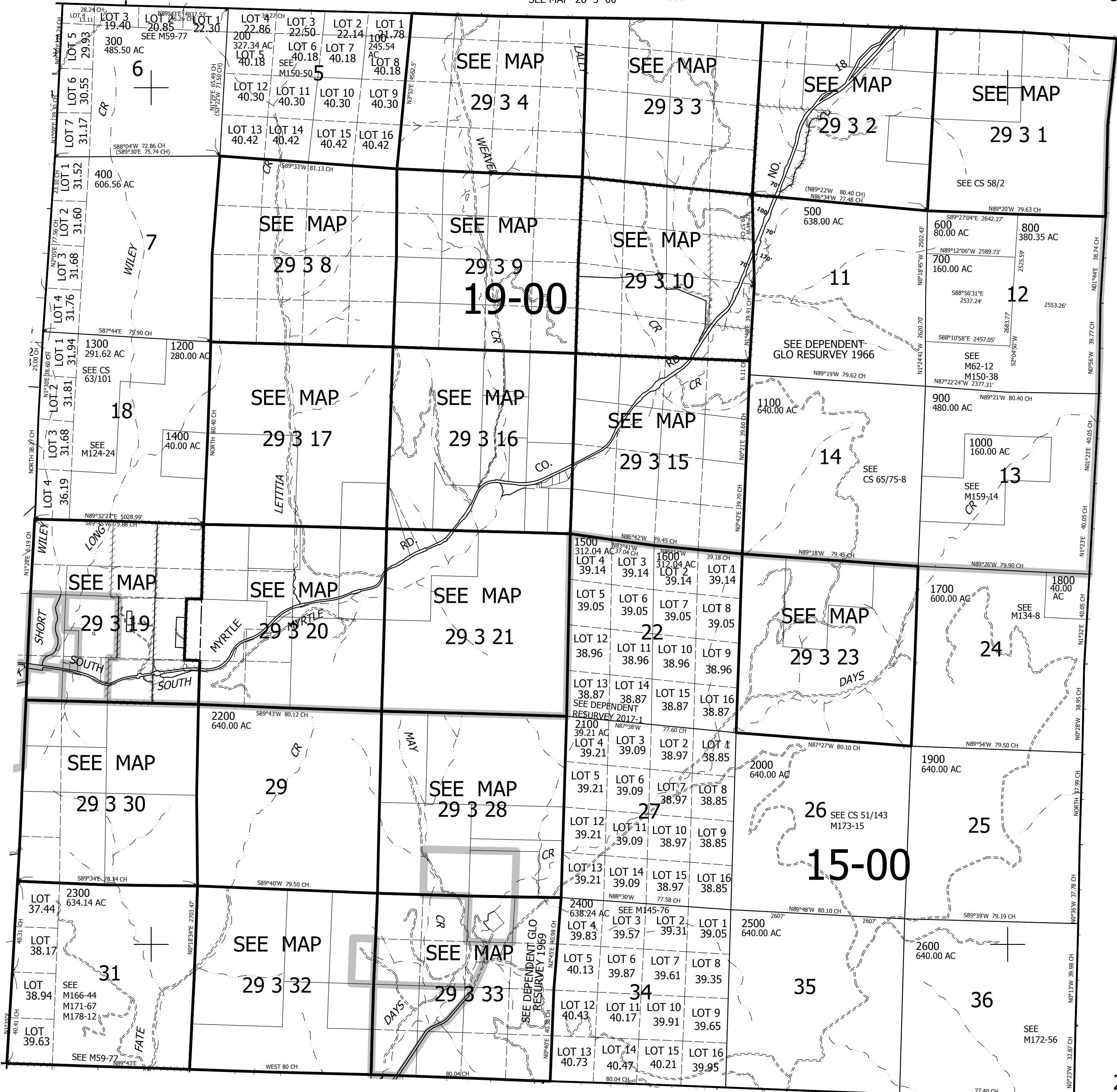
29 3 00  
& INDEX

SEE MAP 28 3 00 1" = 2000'

CANCELLED NO'S  
300M1 600M1 800M1  
1000M1 1100M1 1500M1  
1700M1 2600M1

SEE MAP 29 4 00

SEE MAP 29 2 00



SEE MAP 30 3 00

29 3 00  
& INDEX

4,250,000