

THIS MAP WAS PREPARED FOR ASSESSMENT PURPOSE ONLY.

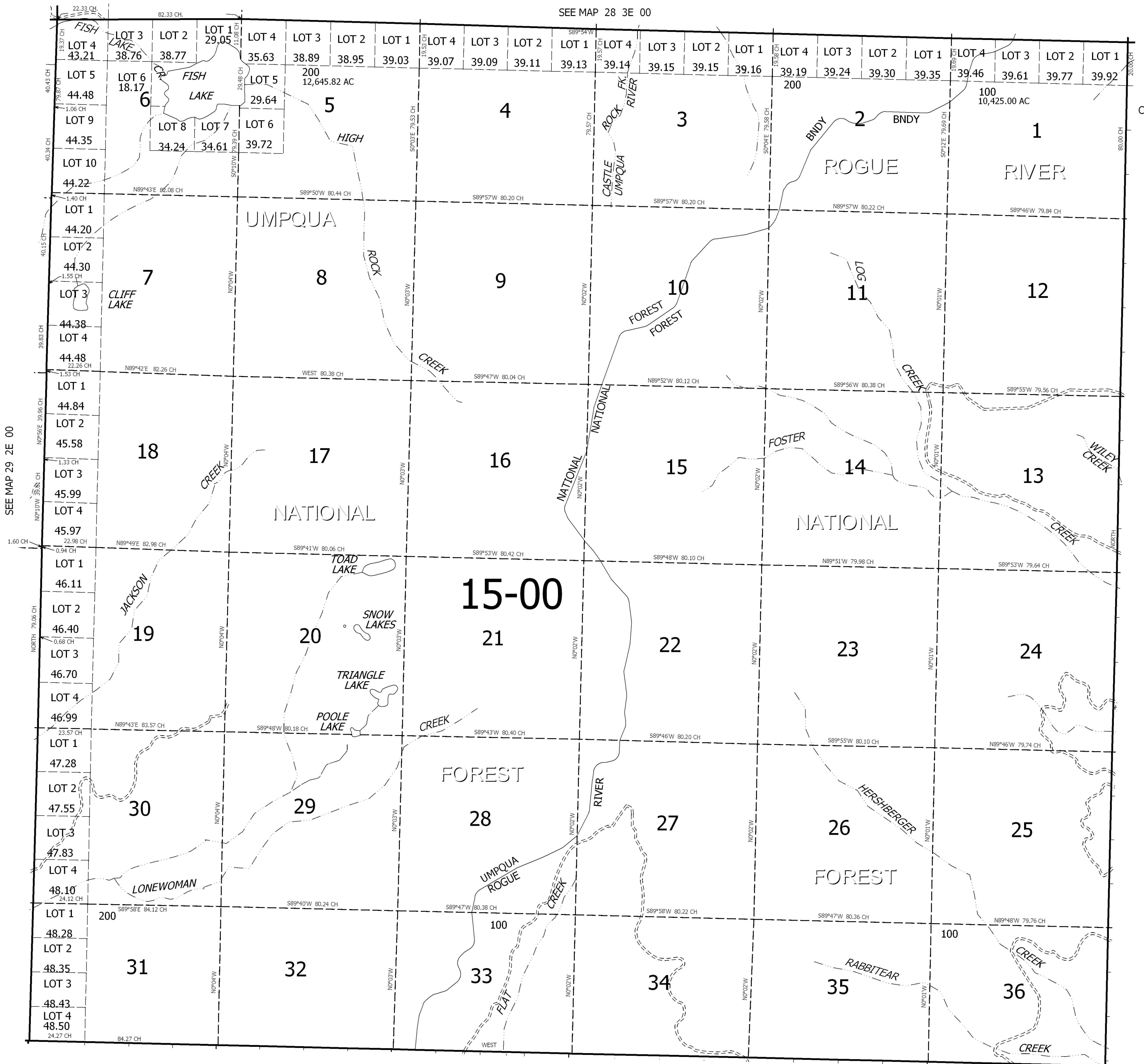
T.29S. R.3E. W.M. DOUGLAS COUNTY

1" = 2000'

REVISED ON

29 3E 00

SEE MAP 28 3E 00



CANCELLED NO'S

SEE MAP 29 2E 00

SEE MAP 29 4E 00

SEE MAP 30 3E 00

29 3E 00