

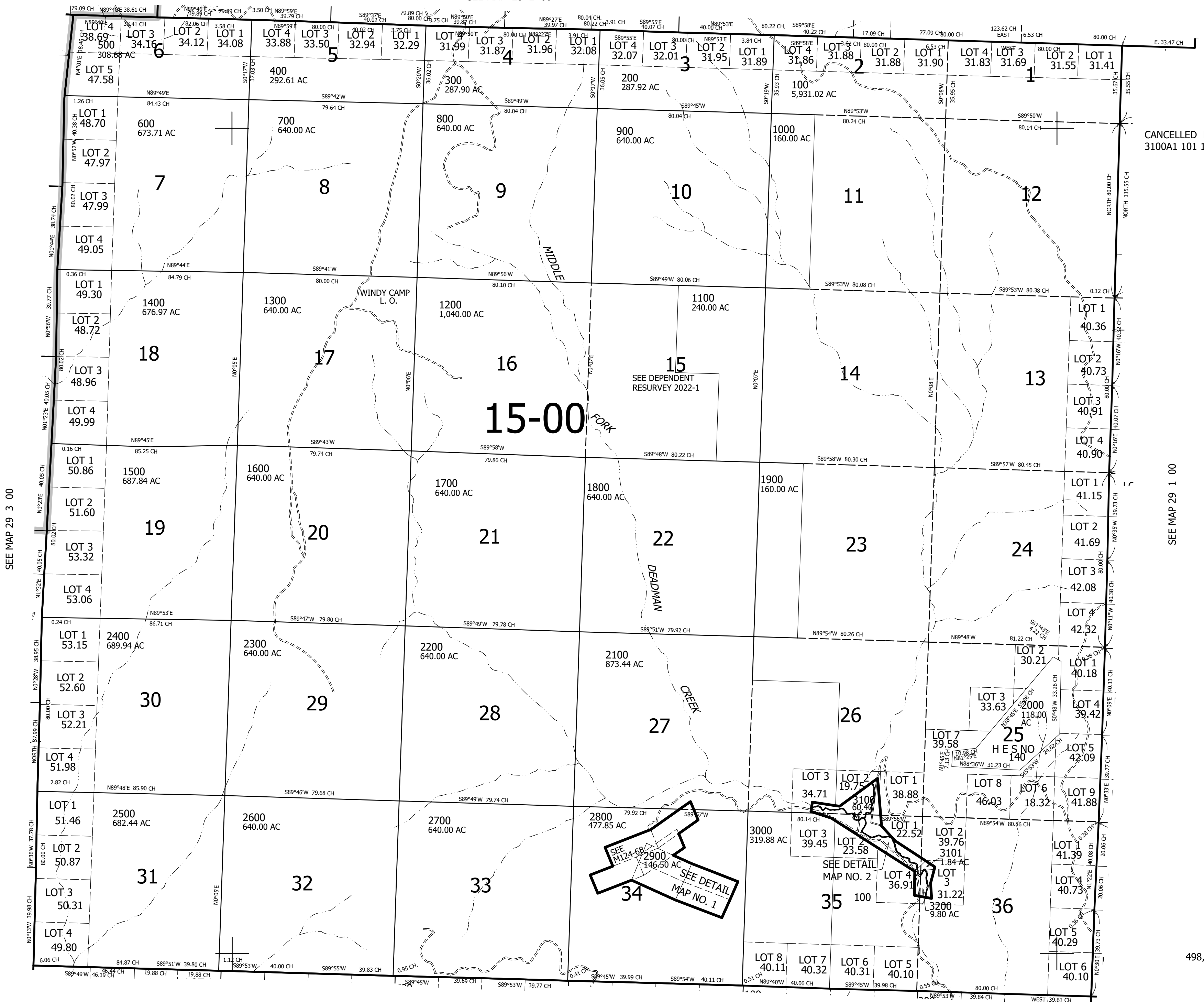
THIS MAP WAS PREPARED FOR ASSESSMENT PURPOSE ONLY.

T.29S. R.2W. W.M. DOUGLAS COUNTY

REVISED ON 1-22-20

29 2 00 & INDEX

SEE MAP 28 2 00 1" = 2000'



CANCELLED NO'S 3100A1 101 1101

SEE MAP 29 1 00

SEE MAP 29 3 00

SEE M124-68
SEE DETAIL MAP NO. 1
SEE DETAIL MAP NO. 2

498,000

SEE MAP 30 2 00

4,283,000

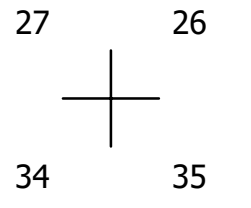
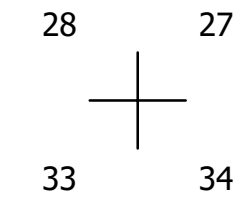
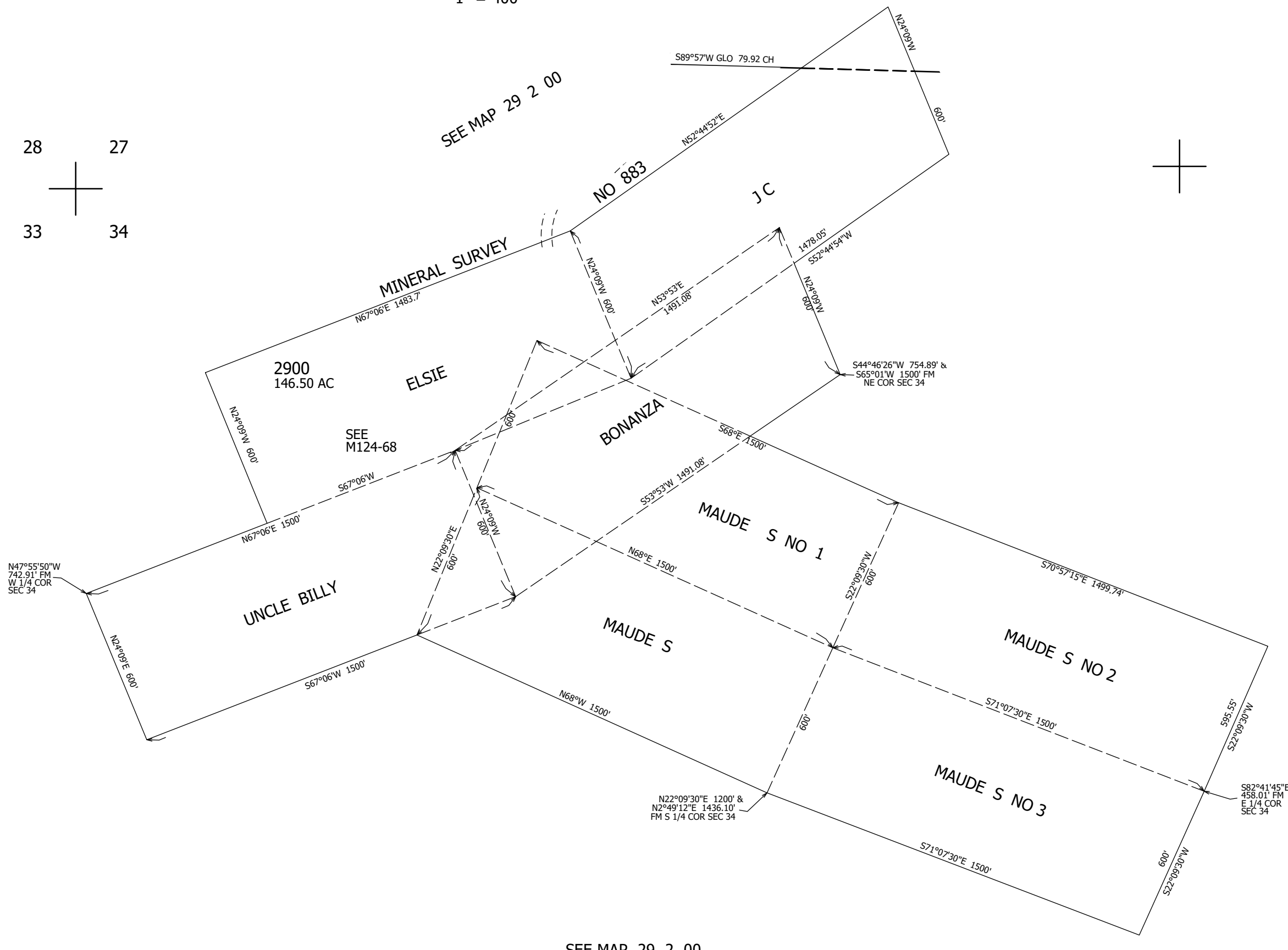
29 2 00 & INDEX

THIS MAP WAS PREPARED FOR ASSESSMENT PURPOSE ONLY.

DETAIL SHEET NO. 1
MINING CLAIM
T.29S. R.2W. W.M.
DOUGLAS COUNTY
1" = 400'

REVISED ON

29 2 00
DETAIL SHEET
NO. 1 OF 2

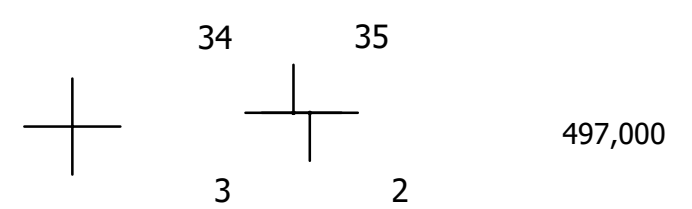
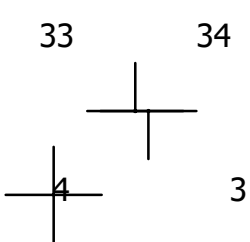


CANCELLED NO'S

SEE MAP 29 2 00

SEE MAP 29 2 00

SEE MAP 29 2 00



4,273,000

29 2 00
DETAIL SHEET
NO. 1 OF 2

THIS MAP WAS PREPARED FOR ASSESSMENT PURPOSE ONLY.

DETAIL SHEET NO. 2
T.29S. R.2W. W.M.
DOUGLAS COUNTY
1" = 400'

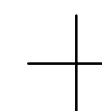
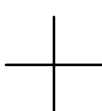
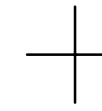
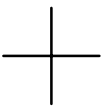
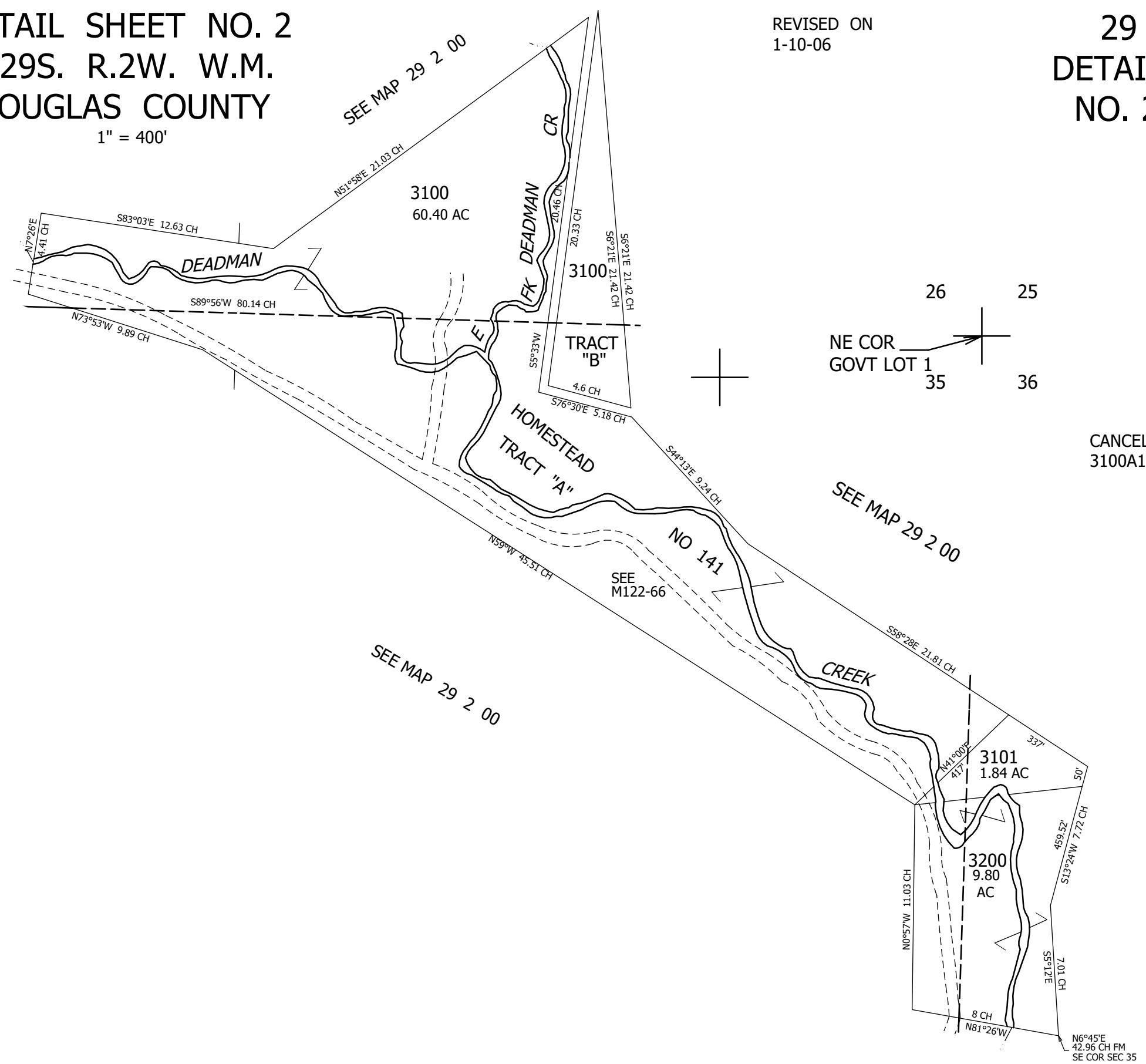
REVISED ON
1-10-06

29 2 00
DETAIL SHEET
NO. 2 OF 2

27 26
34 35

26 25
NE COR
GOVT LOT 1
35 36

CANCELLED NO'S
3100A1



34 35
3 2

35 36
2 1

4,278,000

497,000

29 2 00
DETAIL SHEET
NO. 2 OF 2

SEE MAP 29 2 00