

THIS MAP WAS PREPARED FOR ASSESSMENT PURPOSE ONLY.

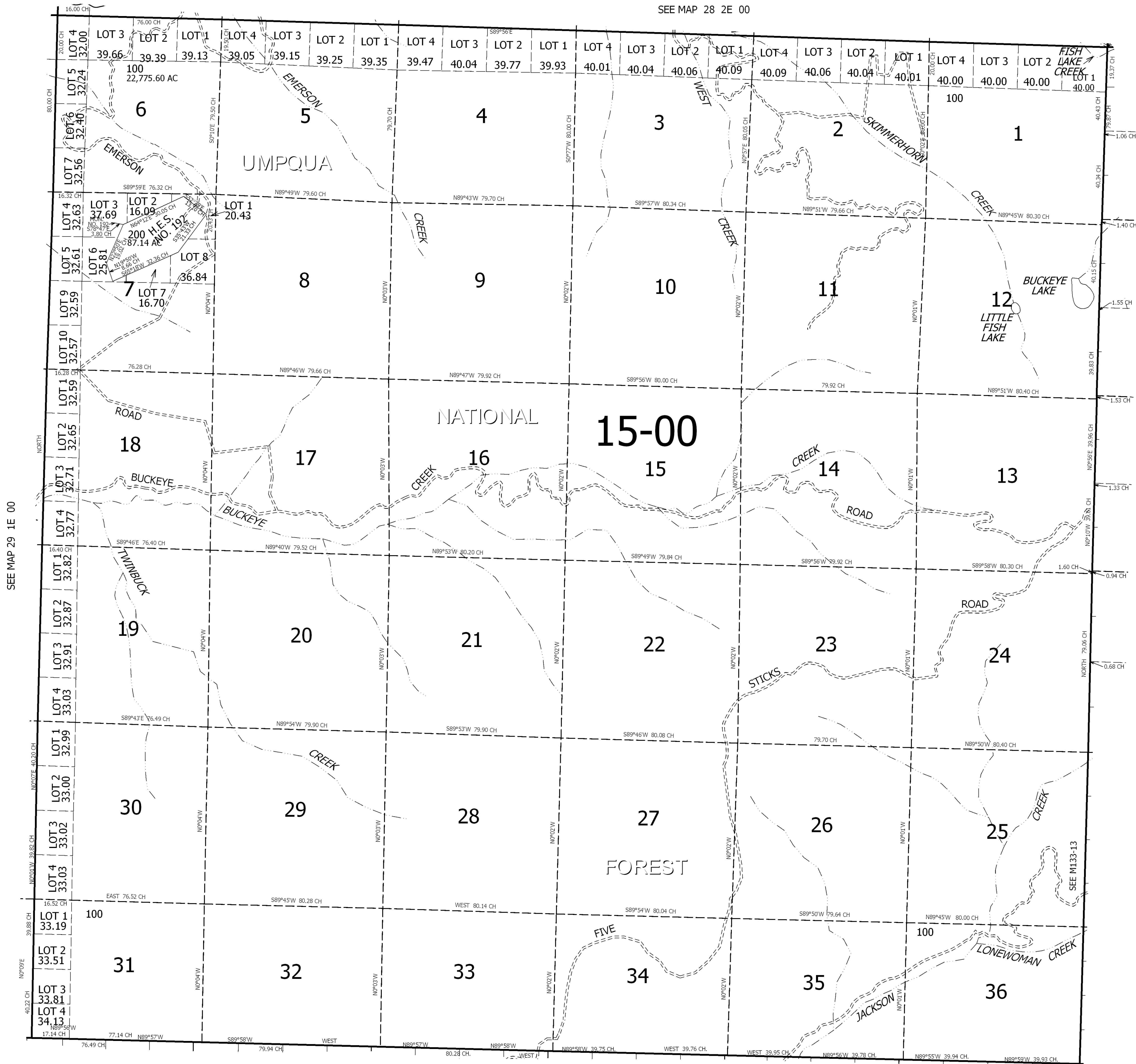
T.29S. R.2E. W.M. DOUGLAS COUNTY

1" = 2000'

REVISED ON

29 2E 00

SEE MAP 28 2E 00



SEE MAP 29 1E 00

SEE MAP 29 3E 00

SEE MAP 30 2E 00

29 2E 00