

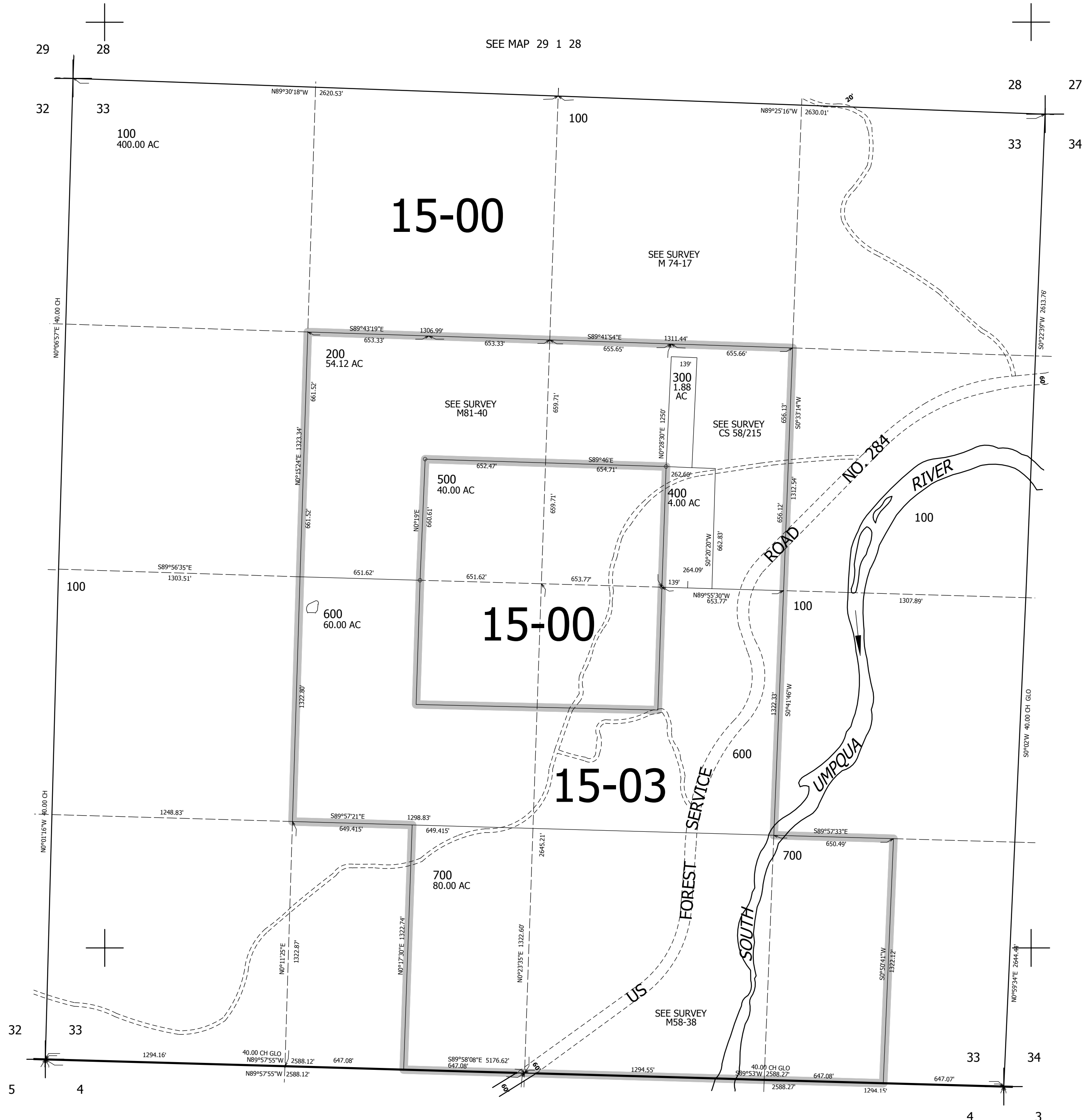
THIS MAP WAS PREPARED FOR ASSESSMENT PURPOSE ONLY.

SEC.33 T.29S. R.1W. W.M. DOUGLAS COUNTY

REVISED ON 2-14-11

29 1 33

1" = 400'



SEE MAP 29 1 28

SEE MAP 29 1 00

SEE MAP 29 1 00

CANCELLED NO'S 200M1 300M1 400M1

SEE MAP 30 1 00

497,000

29 1 33

4,300,000