

THIS MAP WAS PREPARED FOR ASSESSMENT PURPOSE ONLY.

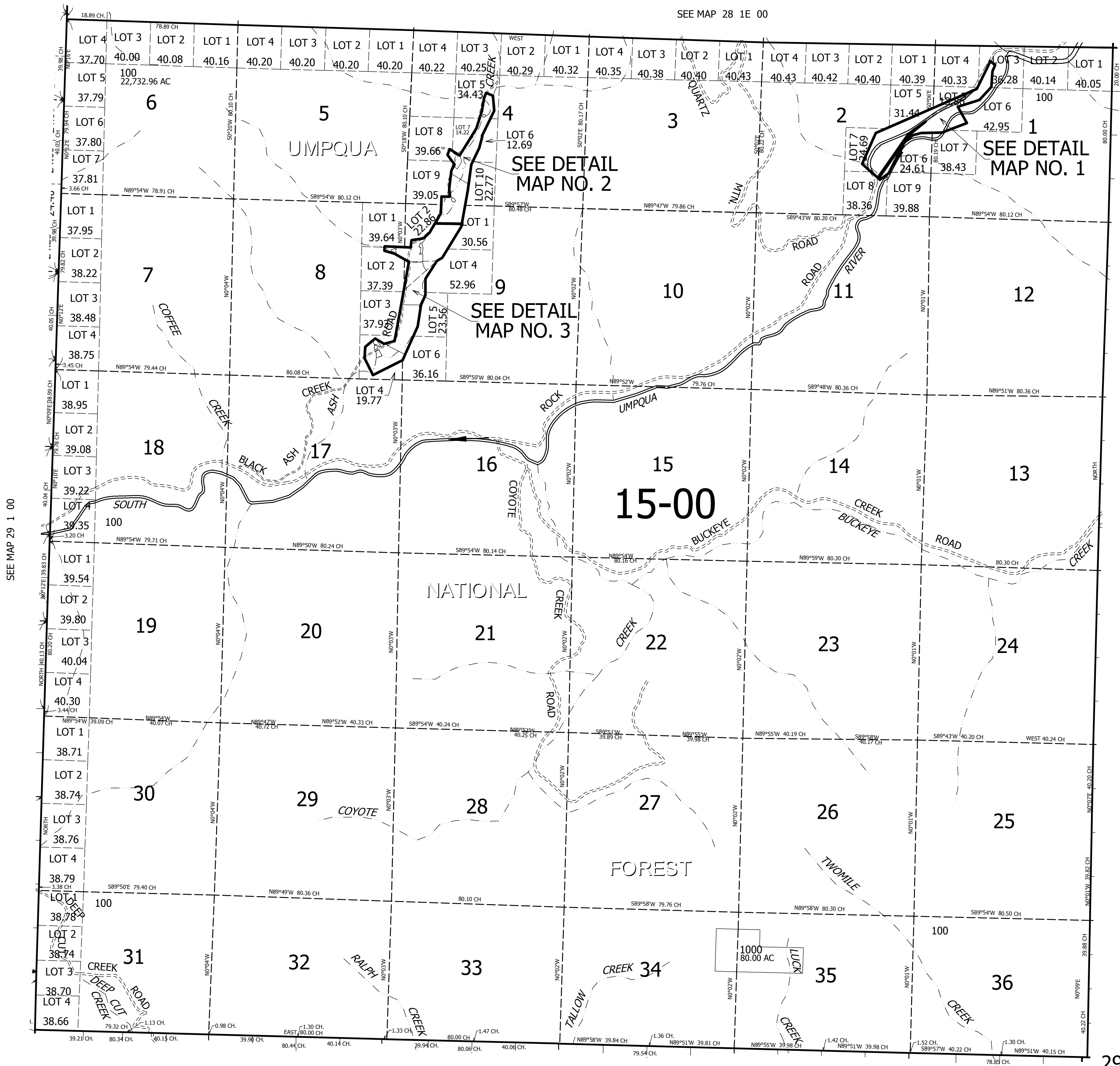
T.29S. R.1E. W.M. DOUGLAS COUNTY

REVISED ON 8-10-11

29 1E 00 & INDEX

1" = 2000'

SEE MAP 28 1E 00



SEE MAP 29 1 00

CANCELLED NO'S

SEE MAP 29 2E 00

SEE MAP 30 1E 00

29 1E 00 & INDEX

THIS MAP WAS PREPARED FOR ASSESSMENT PURPOSE ONLY.

DETAIL NO. 1 T.29S. R.1E. W.M.  
DOUGLAS COUNTY  
1" = 400'

REVISED ON  
4-22-94

29 1E 00  
DETAIL NO. 1

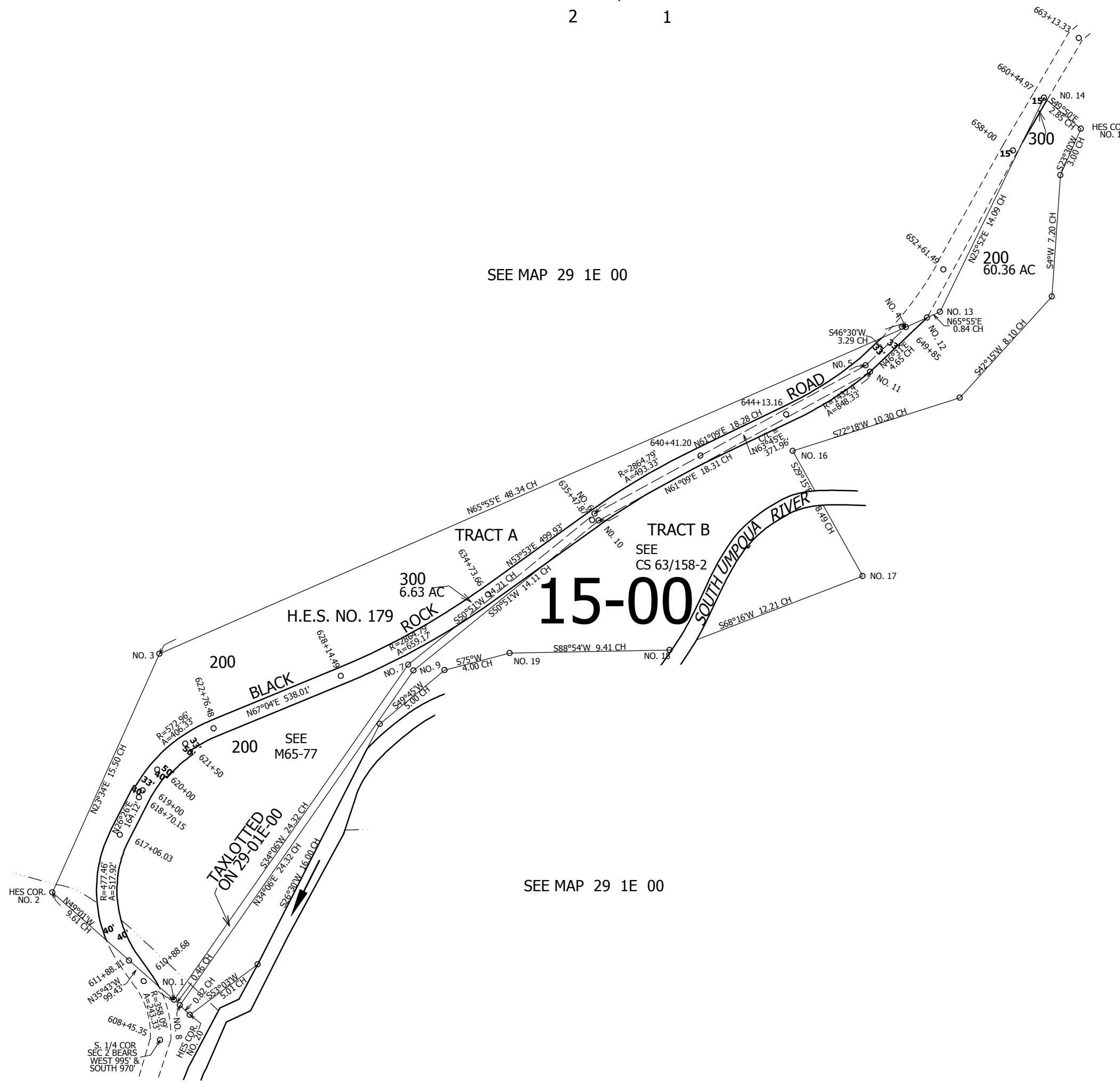
1/4 COR

35 36  
2 1

1/4 COR

CEN SEC

SEE MAP 29 1E 00



SEE MAP 29 1E 00

CEN SEC

1/4 COR

2 1  
11 12

1/4 COR

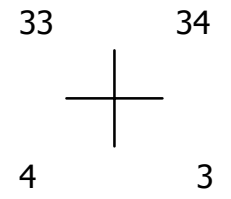
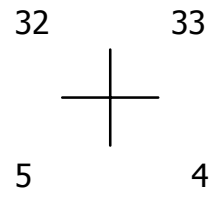
29 1E 00  
DETAIL NO. 1

THIS MAP WAS PREPARED FOR ASSESSMENT PURPOSE ONLY.

DETAIL NO. 2 T.29S. R.1E. W.M.  
DOUGLAS COUNTY  
1" = 400'

REVISED ON  
8-10-11

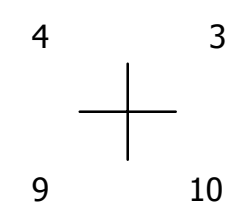
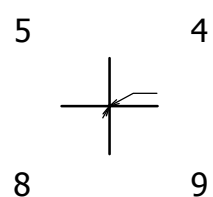
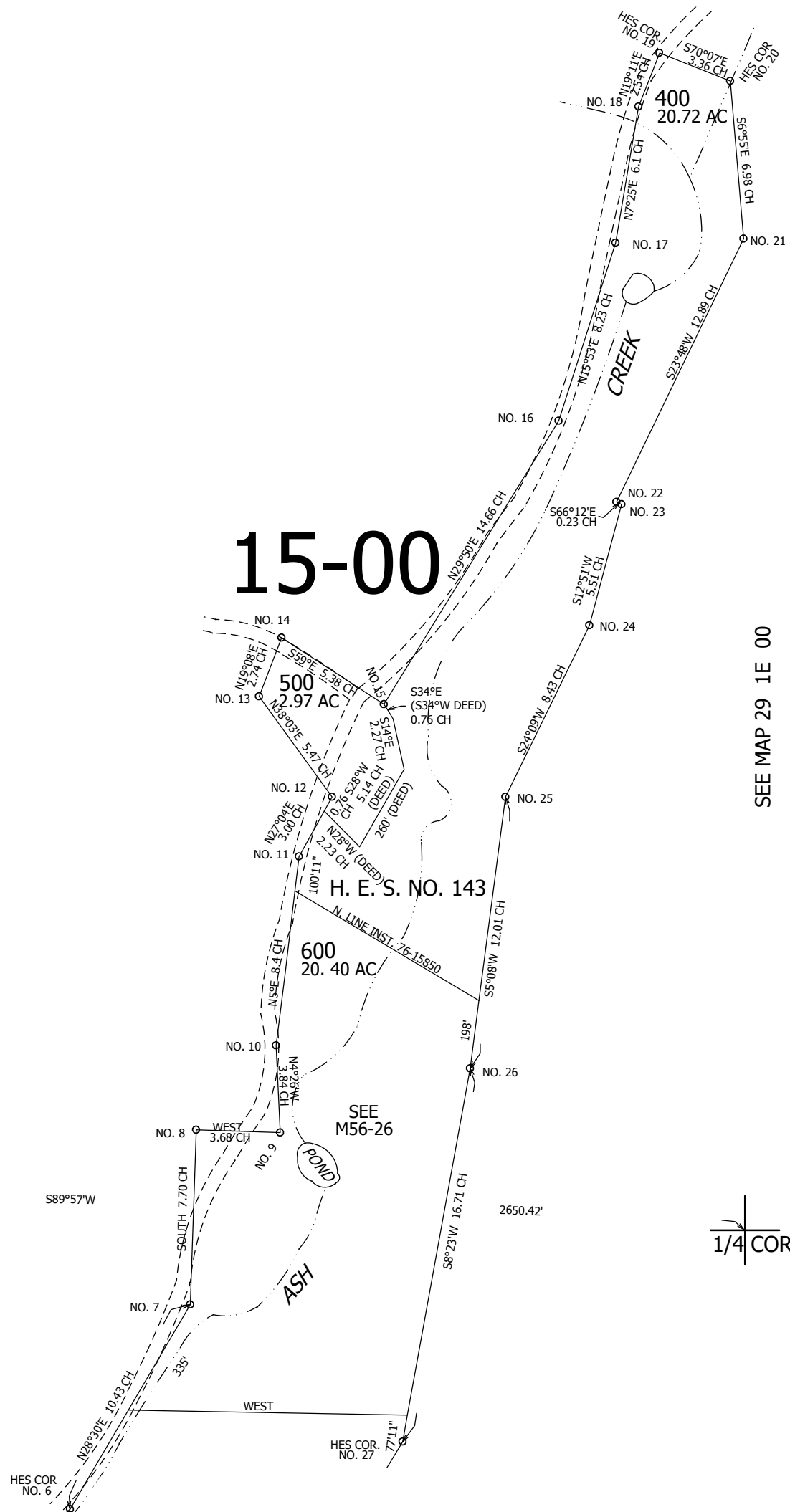
29 1E 00  
DETAIL NO. 2



SEE MAP 29 1E 00

SEE MAP 29 1E 00

SEE MAP 29 1E 00



SEE MAP 29 1E 00 DETAIL NO. 3

29 1E 00  
DETAIL NO. 2

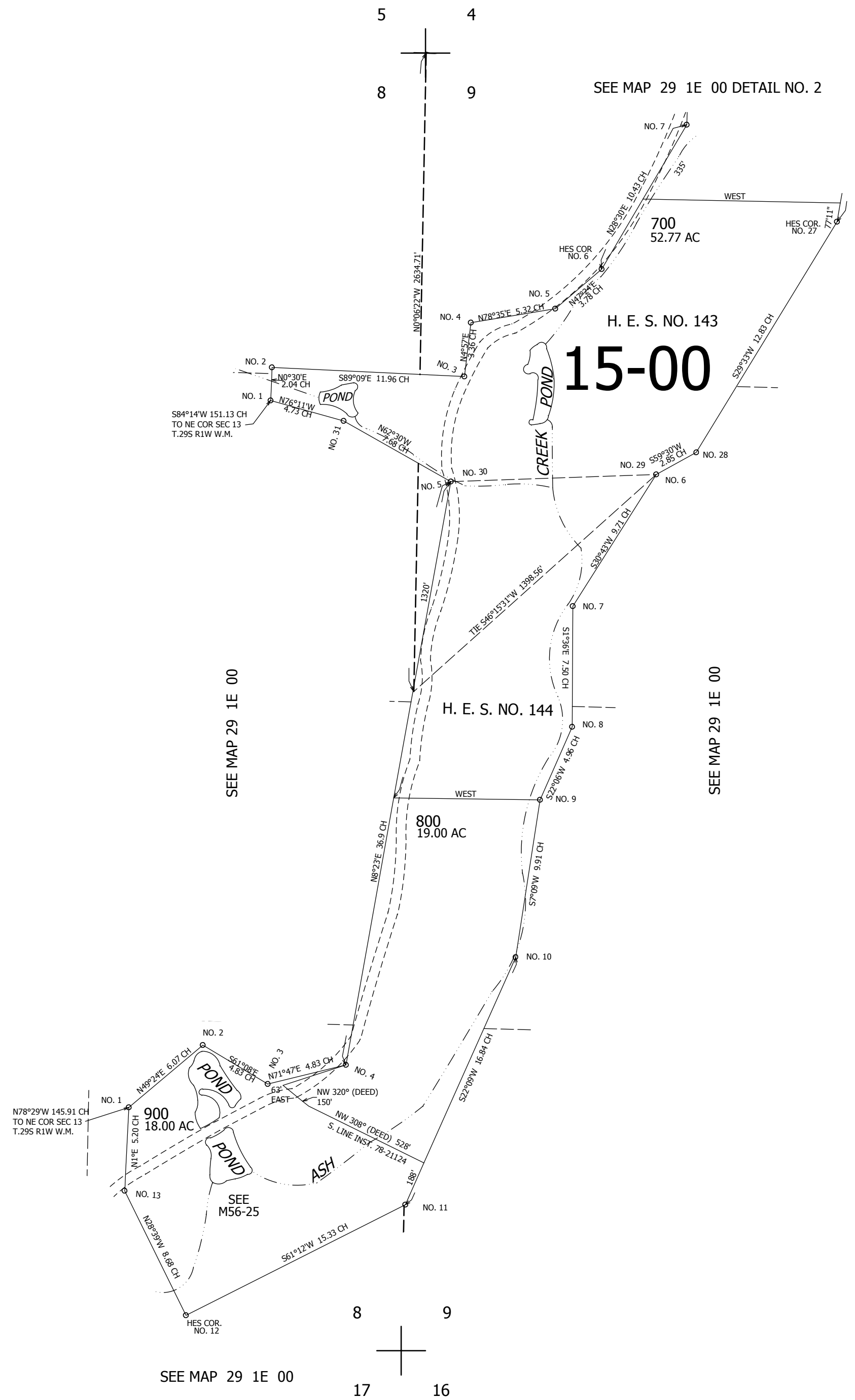
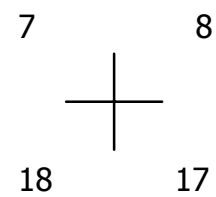
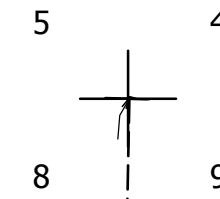
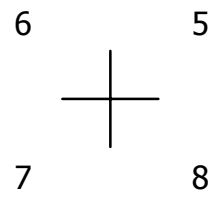
THIS MAP WAS PREPARED FOR ASSESSMENT PURPOSE ONLY.

DETAIL NO. 3 T.29S. R.1E. W.M. DOUGLAS COUNTY  
1" = 400'

REVISED ON 8-10-11

29 1E 00  
DETAIL NO. 3

CANCELLED NO'S



29 1E 00  
DETAIL NO. 3