

THIS MAP WAS PREPARED FOR ASSESSMENT PURPOSE ONLY.

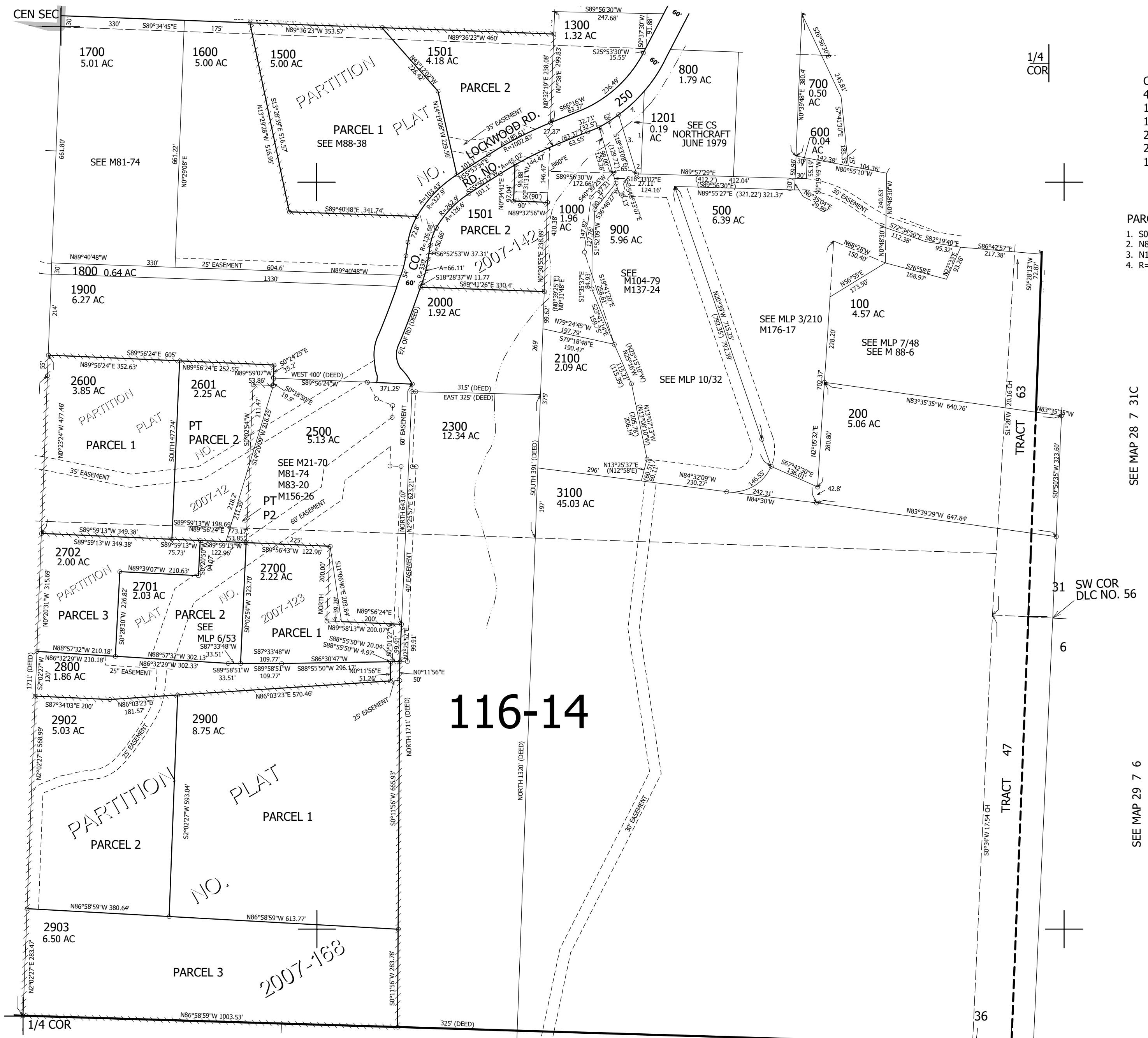
SE1/4 SEC.36 T.28S. R.8W. W.M.
DOUGLAS COUNTY
1" = 200'

REVISED ON
12-1-21

28 8 36D

SEE MAP 28 8 36A

SEE MAP 28 8 36



CANCELLED NO'S
 400 1200 3000
 1400 1100 2200
 1101 1199 901
 2801 2901 2400
 2602 2502 2501
 1001 1002 300

PARCEL 1201
 1. S0°38'13"W 221.49'
 2. N89°22'W 11.95'
 3. N18°33'08"W 164.8'
 4. R=395.62' A=93.54'

SEE MAP 28 7 31C

SEE MAP 29 7 6

532,000

SEE MAP 29 8 1

4,096,000

28 8 36D