

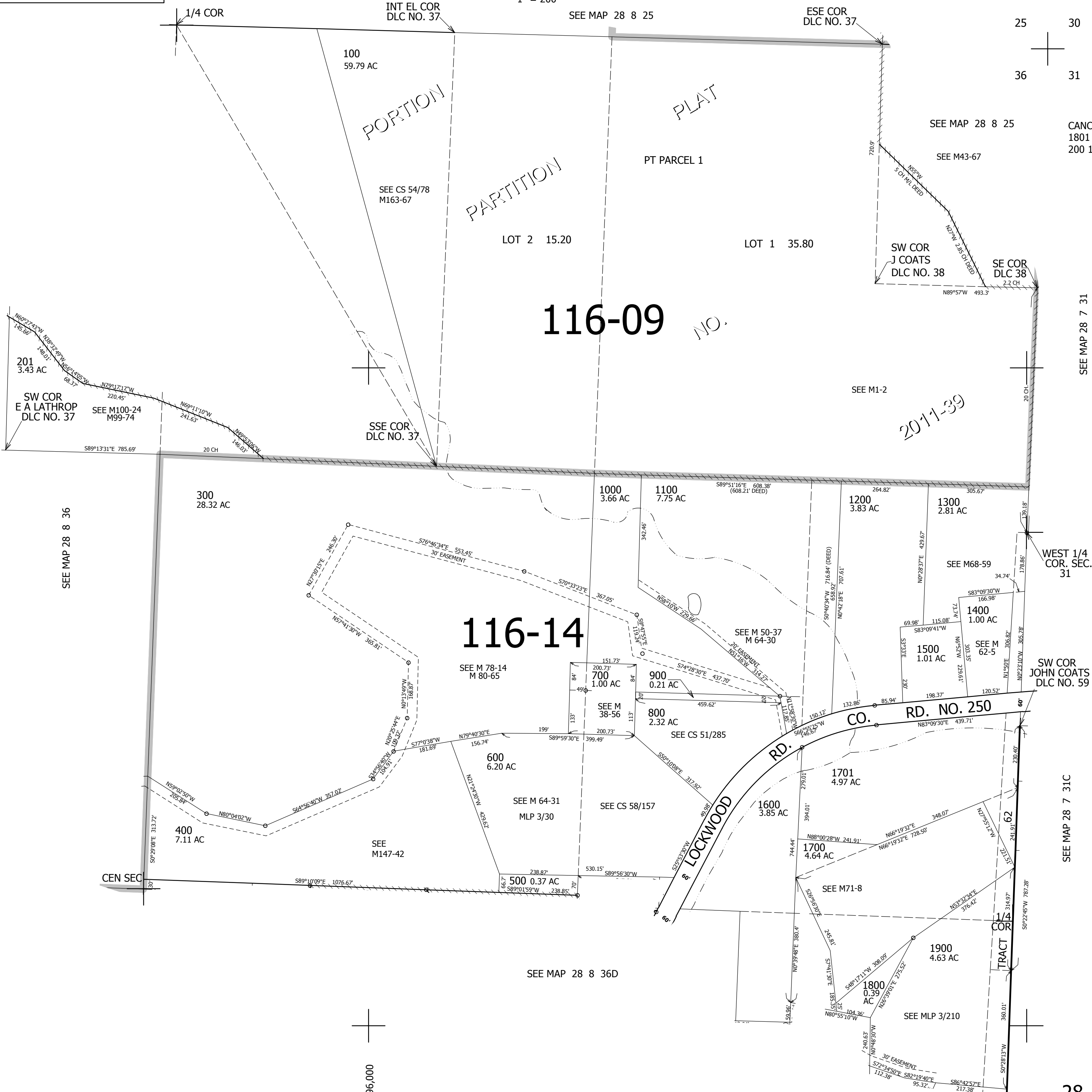
THIS MAP WAS PREPARED FOR ASSESSMENT PURPOSE ONLY.

NE1/4 SEC.36 T.28S. R.8W. W.M.
DOUGLAS COUNTY

REVISED ON
5-15-12

28 8 36A

1" = 200'



CANCELLED NO'S
1801 1802 202
200 101

SEE MAP 28 7 31

SEE MAP 28 8 36

WEST 1/4 COR. SEC. 31

SW COR JOHN COATS DLC NO. 59

SEE MAP 28 7 31C

534,000

28 8 36A