

THIS MAP WAS PREPARED FOR ASSESSMENT PURPOSE ONLY.

SEC.23 T.28S. R.8W. W.M. DOUGLAS COUNTY

REVISED ON 7-14-21

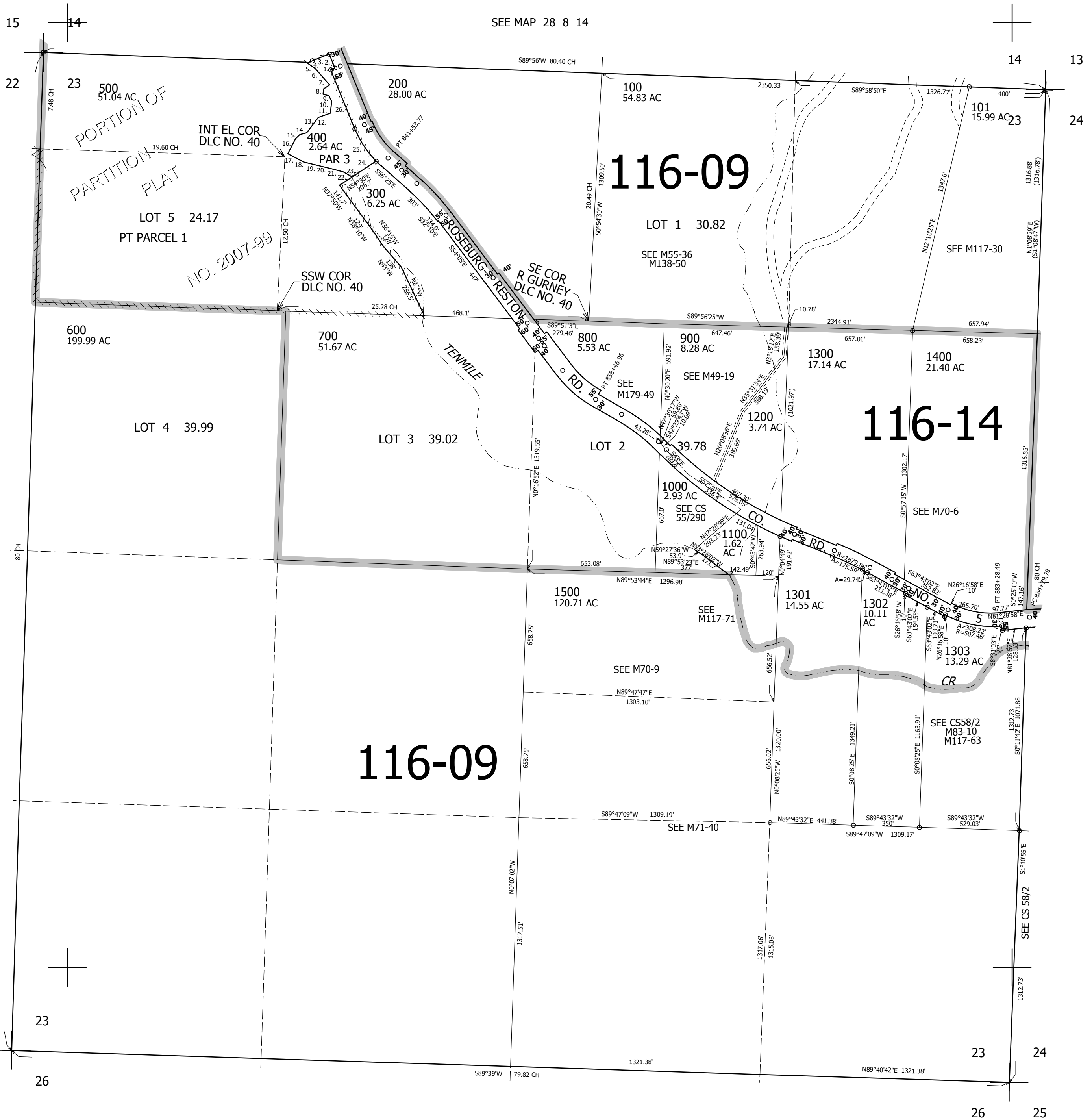
28 8 23

1" = 400'

SEE MAP 28 8 14

PARCEL 401

1. N65°31'47"E 25'
 2. N24°28'47"W 79.87'
 3. S65°31'13"W 96.92'
 4. S65°31'13"W 28.11'
 5. S57°09'44"E 49.66'
 6. S43°46'11"E 116.5'
 7. S52°49'18"W 39.04'
 8. S3°16'50"W 27.81'
 9. S77°38'13"E 31.85'
 10. S29°11'14"E 33.2'
 11. S4°18'10"W 62.63'
 12. S68°43'42"W 67.45'
 13. S35°11'49"W 102.83'
 14. S72°14'41"W 36.74'
 15. S45°18'11"W 31.39'
 16. S24°59'20"W 78.22'
 17. S24°59'20"W 12'
 18. S64°38'16"E 94.54'
 19. S78°40'22"E 147.95'
 20. S7°00'19"E 67.69'
 21. S63°44'16"E 46.21'
 22. S32°52'00"E 7.68'
 23. N54°30'00"E 33.51'
 24. N54°30'00"E 123.38'
 25. LC=N35°50'28"W 206.68'
- A=208' R=532.46'
26. N24°28'47"W 336.22'



CANCELLED NO'S 500M1 401 402

SEE MAP 28 8 00

SEE MAP 28 8 24

543,000

SEE MAP 28 8 26

4,093,000

28 8 23