

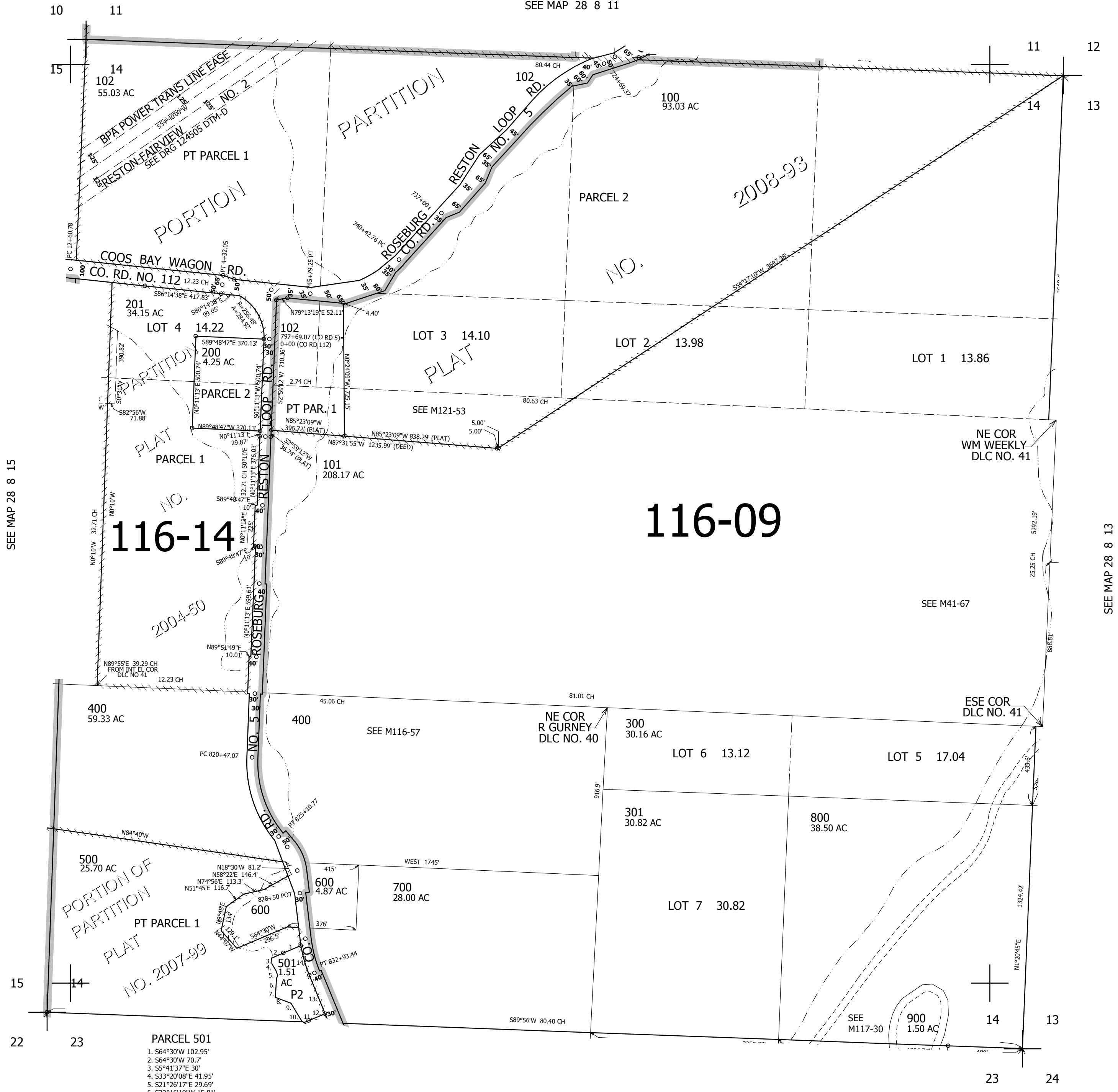
SEC.14 T.28S. R.8W. W.M.  
DOUGLAS COUNTY

REVISED ON  
5-14-12

1" = 400'

THIS MAP WAS PREPARED FOR  
ASSESSMENT PURPOSE ONLY.

SEE MAP 28 8 11



CANCELLED NO'S  
502

SEE MAP 28 8 15

SEE MAP 28 8 13

116-14

116-09

- PARCEL 501
1. S64°30'W 102.95'
  2. S64°30'W 70.7'
  3. S5°41'37"E 30'
  4. S33°20'08"E 41.95'
  5. S21°26'17"E 29.69'
  6. S22°16'19"W 15.81'
  7. S1°04'55"W 104.02'
  8. S70°53'05"E 90.51'
  9. S33°41'14"E 113.95'
  10. S57°09'44"E 13.6'
  11. N65°31'13"E 28.11'
  12. N65°31'13"E 96.92'
  13. N24°28'47"W 226.69'
  14. LC=N18°06'11"W 167.95'  
A=168.3' R=746.2'

SEE MAP 28 8 23

548,000

4,093,000