

THIS MAP WAS PREPARED FOR ASSESSMENT PURPOSE ONLY.

SEC.2 T.28S. R.8W. W.M. DOUGLAS COUNTY

1" = 400'

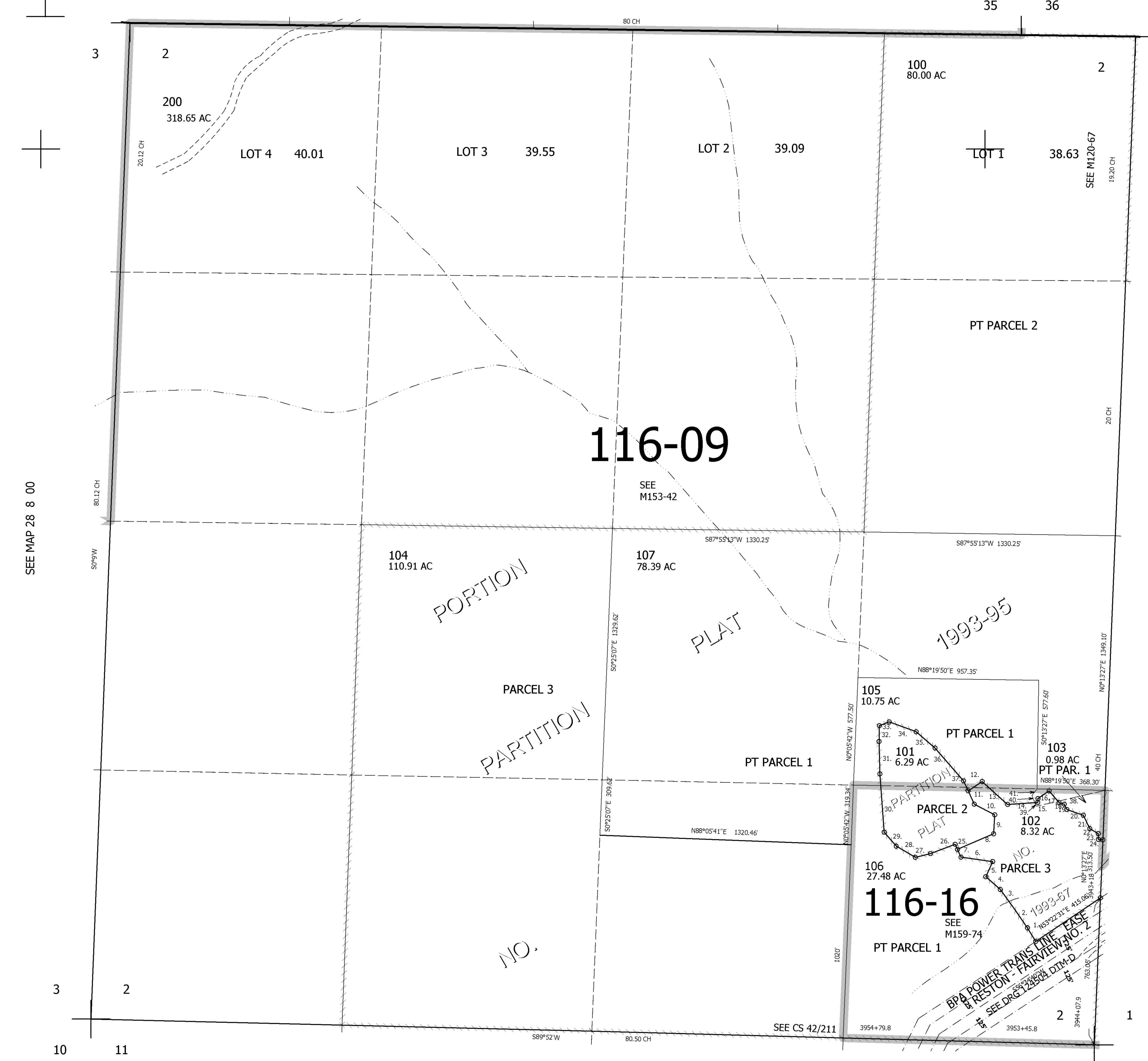
REVISED ON 7-19-10

28 8 2

34 35

SEE MAP 27 8 35

35 36



CANCELLED NO'S 200M1 199

SEE MAP 28 8 1

- PP 1993-67
- S30°37'02"E 95.61'
 - S37°20'17"E 105.88'
 - S37°19'47"E 139.41'
 - S56°00'35"E 98.04'
 - S22°04'22"W 89.88'
 - S85°18'53"E 166.84'
 - S29°39'41"E 49.65'
 - S64°54'35"W 204.36'
 - S2°37'39"W 105.26'
 - S65°13'29"E 122.2'
 - S27°26'02"E 66.7'
 - S52°20'30"W 92.6'
 - N49°40'25"W 171.72'
 - N84°01'56"E 166.3'
 - S24°05'26"E 17.19'
 - S50°41'09"W 75.08'
 - N44°59'30"W 88.25'
 - N83°47'35"W 23.66'
 - N29°44'40"W 34.71'
 - N73°26'32"W 86.74'
 - N25°57'13"W 78.71'
 - N63°50'51"W 56.69'
 - N1°50'00"W 30.9'
 - S86°15'10"W 24.66'
 - N27°30'00"W 26.82'
 - S66°03'18"W 136.83'
 - S73°11'34"W 77.74'
 - N61°51'46"W 122.86'
 - N42°05'32"W 95'
 - N6°25'58"W 309.29'
 - N3°08'05"W 173.25'
 - N1°17'36"W 77.25'
 - N63°52'06"E 53.35'
 - S72°48'24"E 150.05'
 - S52°58'24"E 133.07'
 - S42°01'31"E 226.34'
 - S25°36'04"E 67.02'
 - N75°41'15"E 373.12'
 - N21°30'45"W 8.45'
 - N21°00'40"W 53.68'
 - N35°50'32"E 43' M/L TO 1/16 LINE

3 2

10 11

SEE MAP 28 8 11

11 12

4,093,000

558,000

28 8 2