

THIS MAP WAS PREPARED FOR ASSESSMENT PURPOSE ONLY.

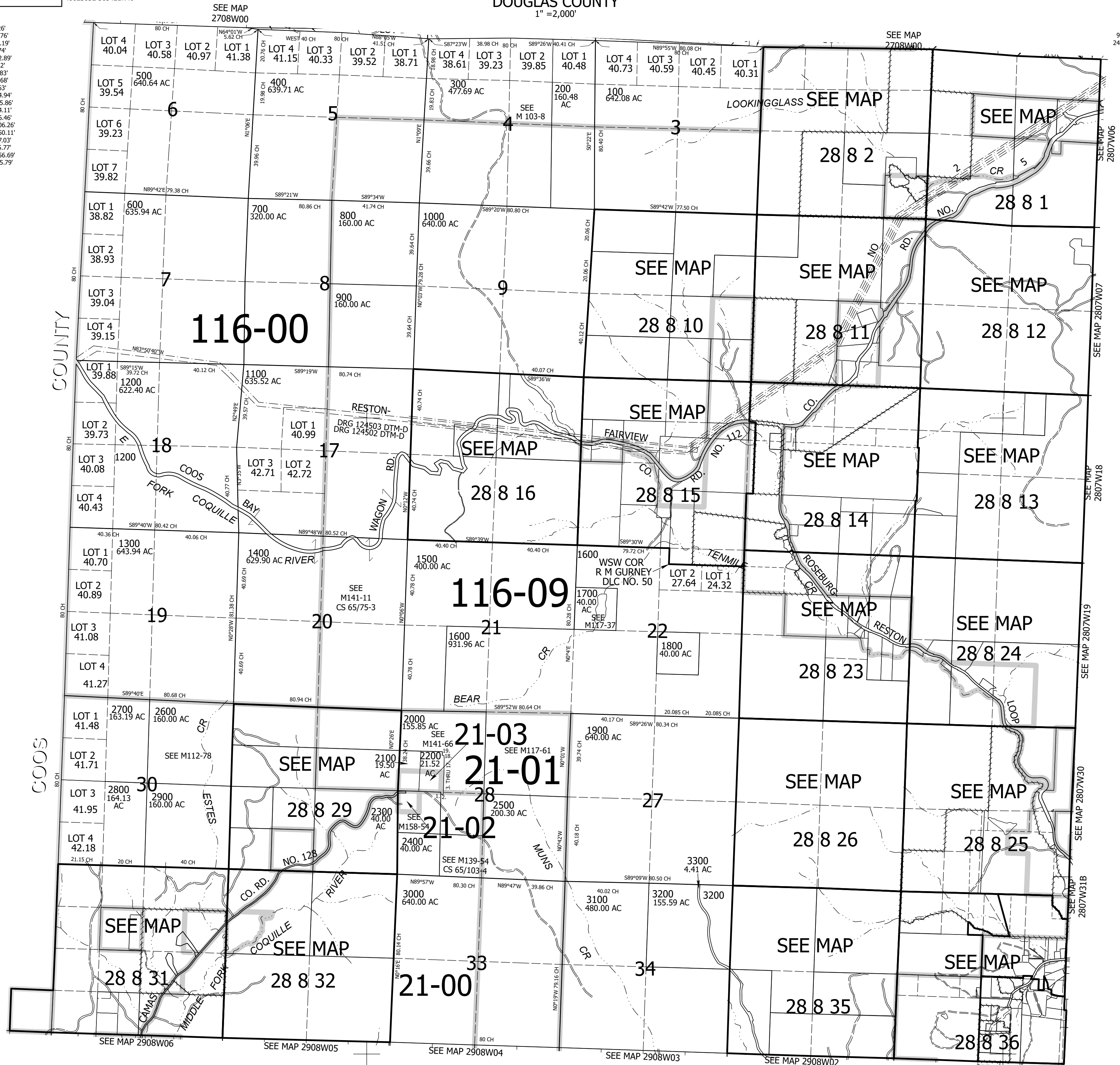
Upper Left:
123°43'15"W 43°10'22"N
4062363E 565421N ft

T.28S. R.08W. & 09W. W.M.
DOUGLAS COUNTY
1" = 2,000'

Date Exported 2023-07-27

CANCELLED NOS:
900M1 1600M1 2300M1
2400M1 2500M1 3100M1

- Parcel 2200
1. S0°58'01"E 63.26'
 2. S80°31'09"E 67.76'
 3. N24°09'21"E 16.19'
 4. N5°19'10"E 35.74'
 5. N0°49'16"W 182.89'
 6. N3°44'14"E 30.22'
 7. N0°18'49"W 42.83'
 8. N1°49'58"W 84.68'
 9. N1°37'54"E 80.63'
 10. N8°03'57"W 24.94'
 11. N1°02'35"E 185.86'
 12. N1°55'52"W 74.11'
 13. N7°27'52"W 46.46'
 14. N0°21'07"W 206.26'
 15. N1°19'47"W 150.11'
 16. N9°31'17"W 37.03'
 17. N0°26'09"W 35.77'
 18. N88°37'55"W 56.69'
 19. N0°00'13"E 115.79'



COOS COUNTY

COOS COUNTY

SEE MAP 2807W06

SEE MAP 2807W07

SEE MAP 2807W18

SEE MAP 2807W19

SEE MAP 2807W30

SEE MAP 2807W31B

SEE MAP 2908W06

SEE MAP 2908W05

SEE MAP 2908W04

SEE MAP 2908W03

SEE MAP 2908W02

SEE MAP 2908W01

Lower Right:
123°34'8"W 43°4'53"N
4101609E 530645N ft