

THIS MAP WAS PREPARED FOR ASSESSMENT PURPOSE ONLY.

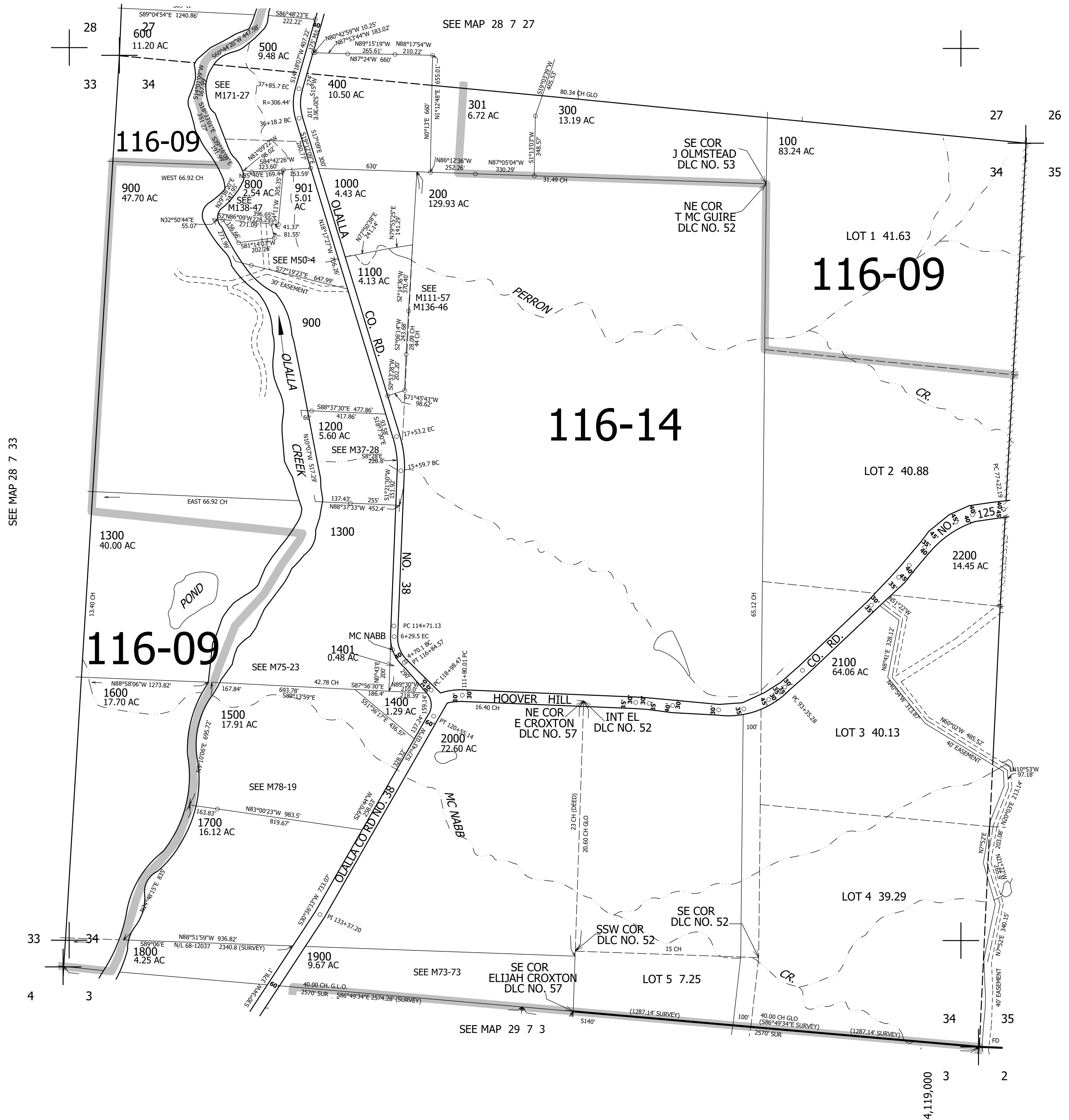
SEC.34 T.28S. R.7W. W.M.
DOUGLAS COUNTY

1" = 400'

REVISED ON
4-14-22

28 7 34

CANCELLED NO'S
1101 1001 902
1102 201 1801
700 200A1



SEE MAP 28 7 33

SEE MAP 28 7 35

SEE MAP 29 7 3

532,000

28 7 34

4,119,000