

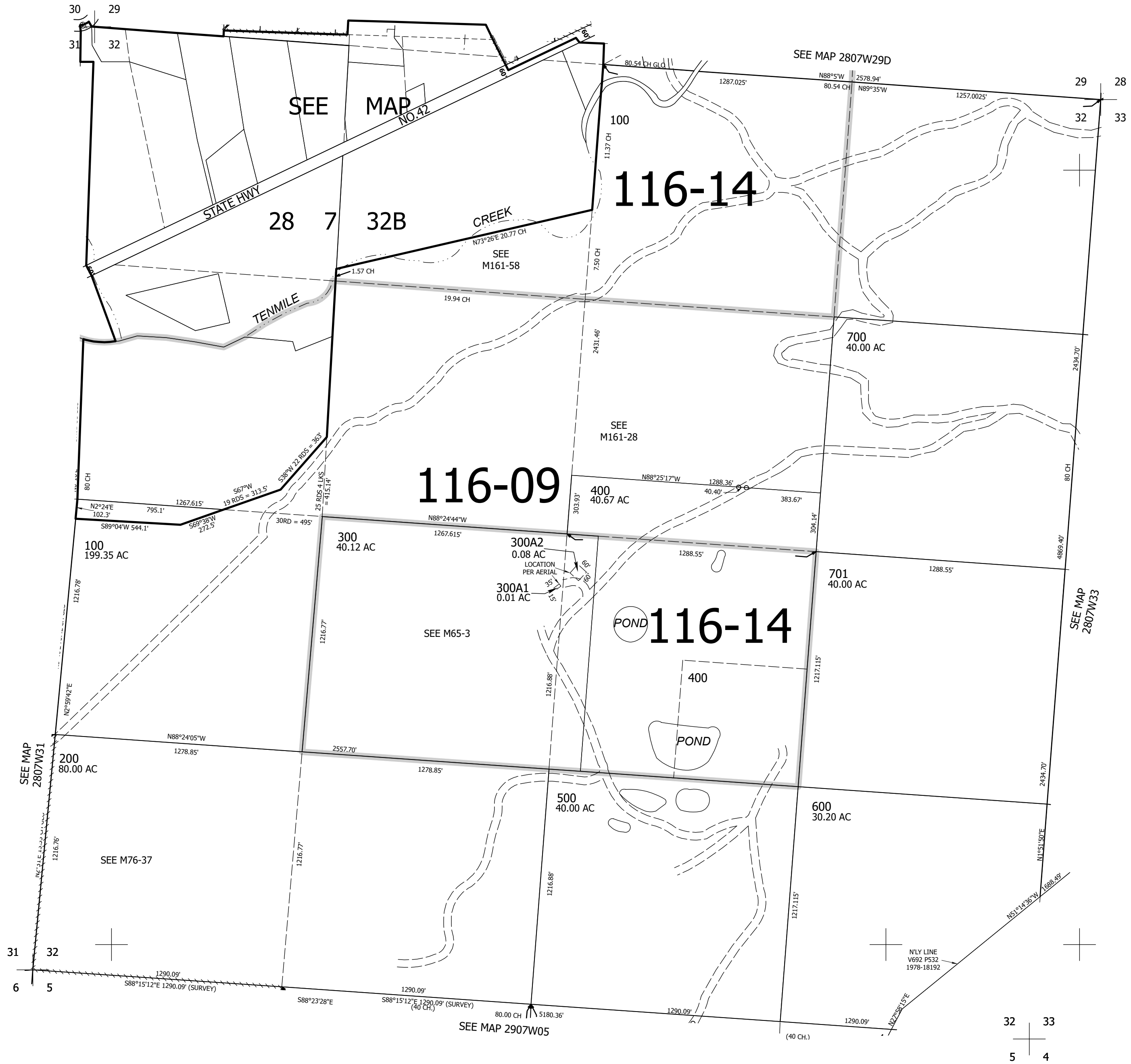
THIS MAP WAS PREPARED FOR ASSESSMENT PURPOSE ONLY.

Upper Left:
123°34'1"W 43°6'13"N
4102404E 538632N ft

SEC.32 T.28S. R.07W. W.M.
DOUGLAS COUNTY
1" = 400'

Date Exported 2024-11-15

CANCELLED NOS:
301



Lower Right:
123°32'12"W 43°5'7"N
4110254E 531677N ft