

THIS MAP WAS PREPARED FOR ASSESSMENT PURPOSE ONLY.

SE1/4 SEC.31 T.28S. R.7W. W.M.
DOUGLAS COUNTY

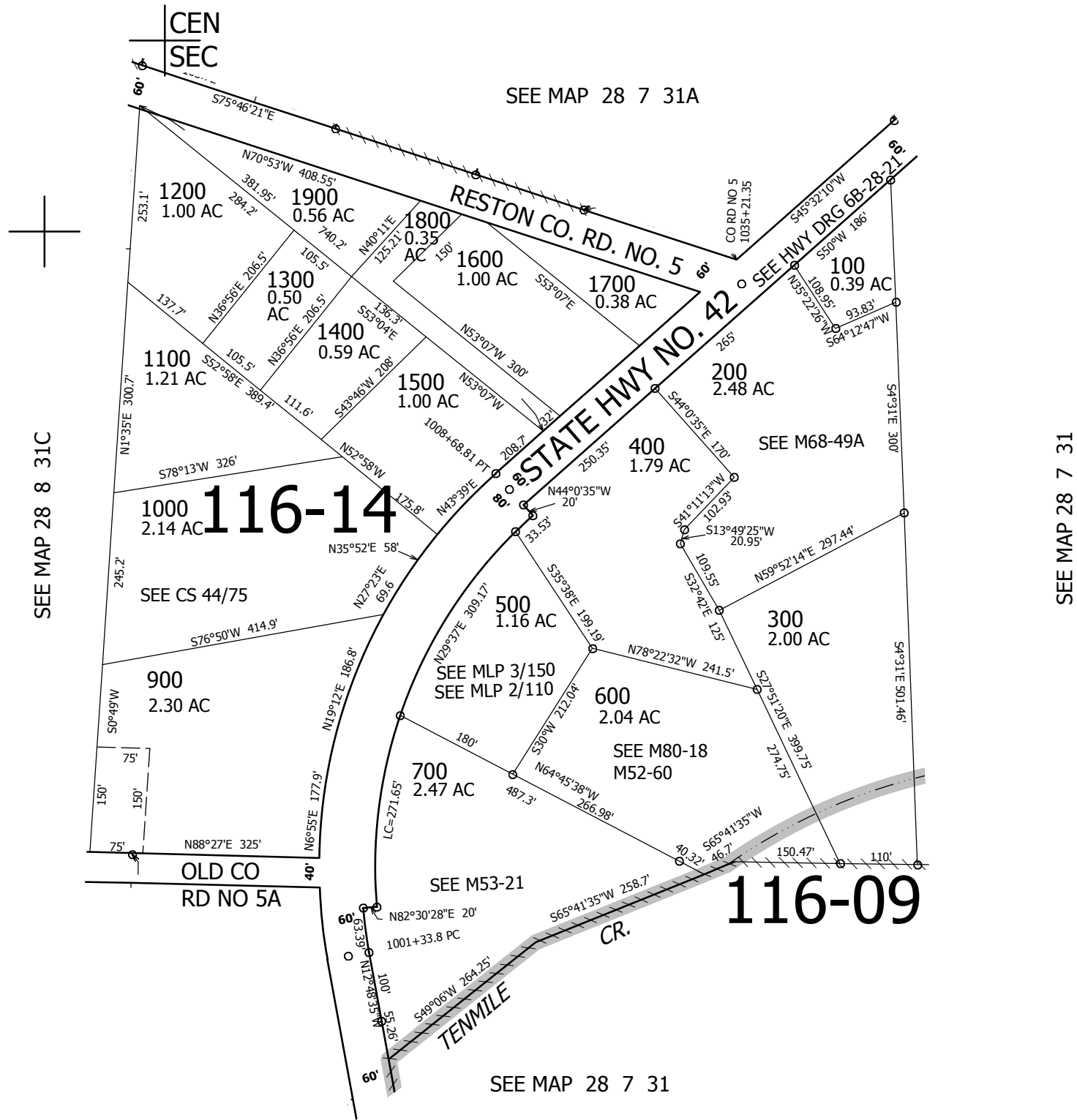
1" = 200'

REVISED ON
7-18-12

28 7 31D

1/4 COR

CANCELLED NO'S
800 900A1 900A2



NE COR
DLC NO. 56

SE COR
DLC NO. 56
1/4 COR

533,000

31	32
6	5

4,103,000

28 7 31D