

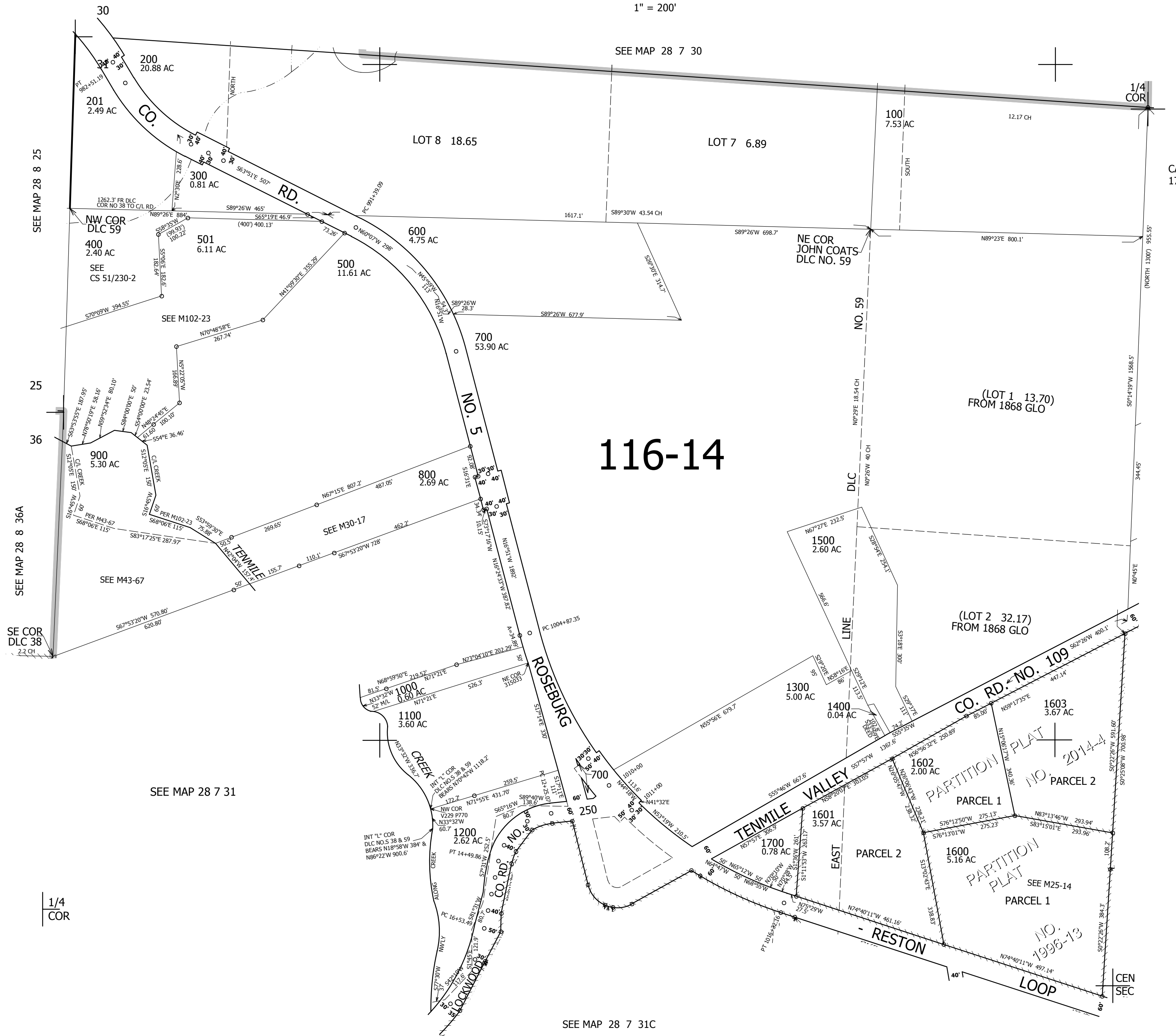
THIS MAP WAS PREPARED FOR ASSESSMENT PURPOSE ONLY.

NW1/4 SEC.31 T.28S. R.7W. W.M.
DOUGLAS COUNTY

REVISED ON
5-14-14

28 7 31B

1" = 200'



CANCELLED NO'S
1700A1 502

SEE MAP 28 7 31A

536,000

4,101,000

28 7 31B